

HYDRAULIC PUMPS

FLOW DIVIDERS

HYDRAULIC MOTORS & MOTOR BRAKES

STEERING UNITS

New Product

505 / 506 (RE)  
SERIES  
HYDRAULIC  
MOTORS



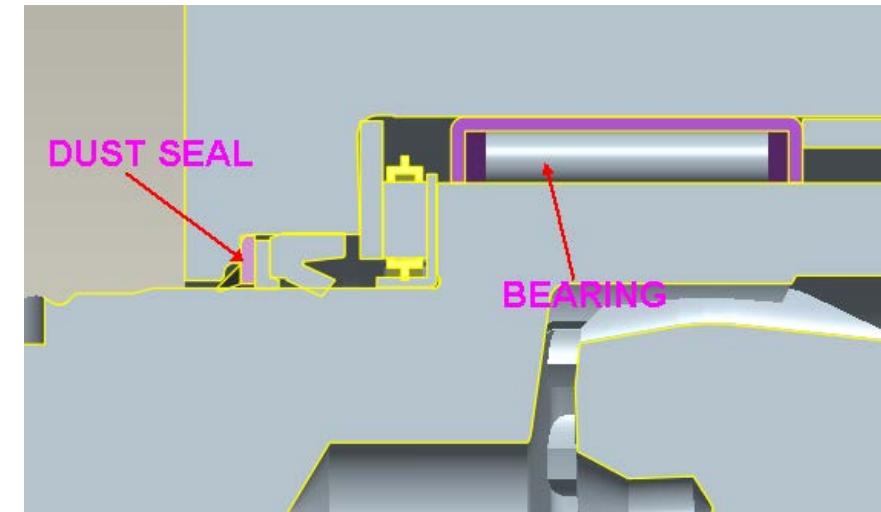
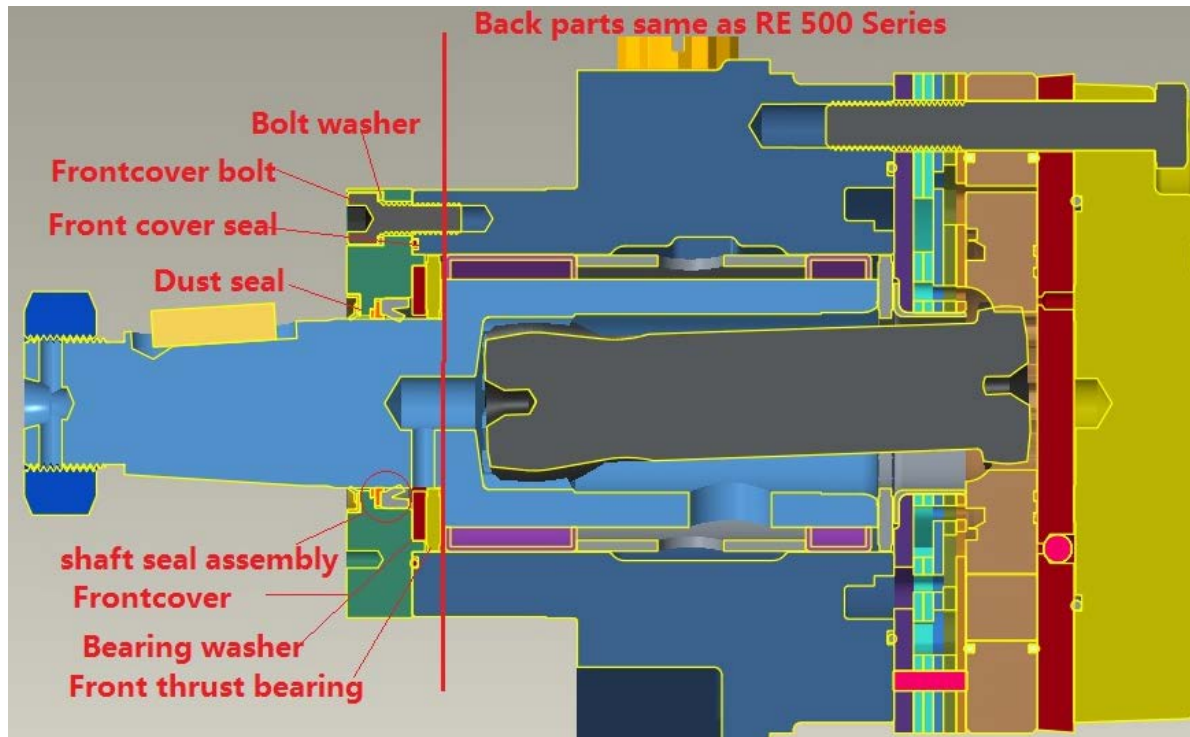
# The New 505 / 506 (RE) Series Hydraulic Motor

# The 505 Series Difference...

## 505 SERIES SECTIONAL VIEW

The Difference

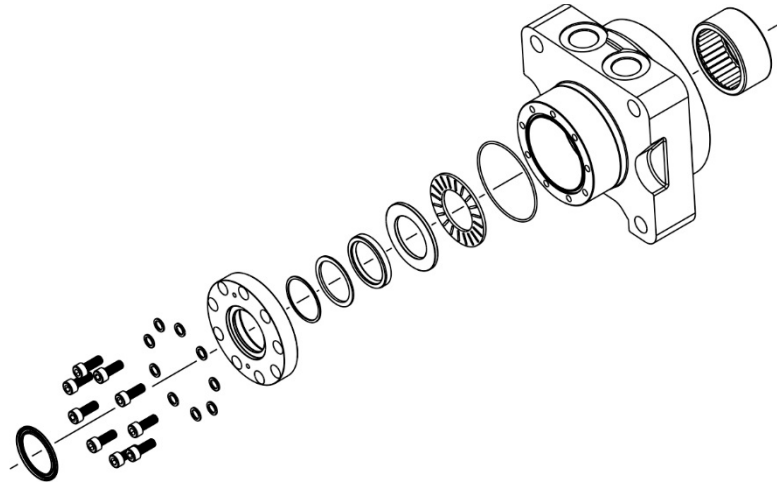
505 / 506 (RE)  
SERIES  
HYDRAULIC  
MOTORS



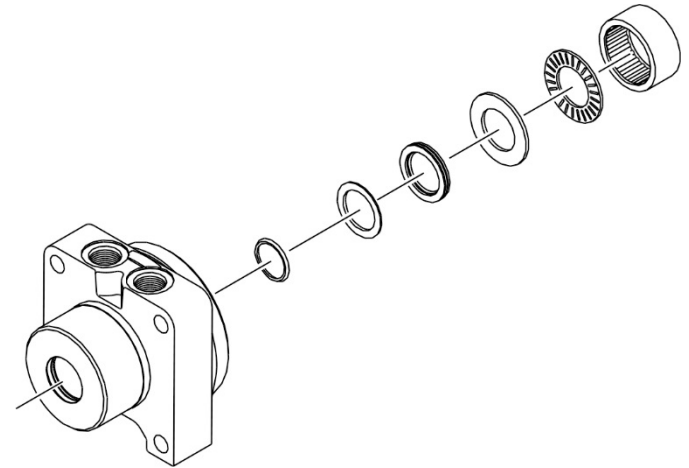
## The Difference

505 / 506 (RE)  
SERIES  
HYDRAULIC  
MOTORS

# The 505 Series Difference...



## 505 Series



## 500 Series

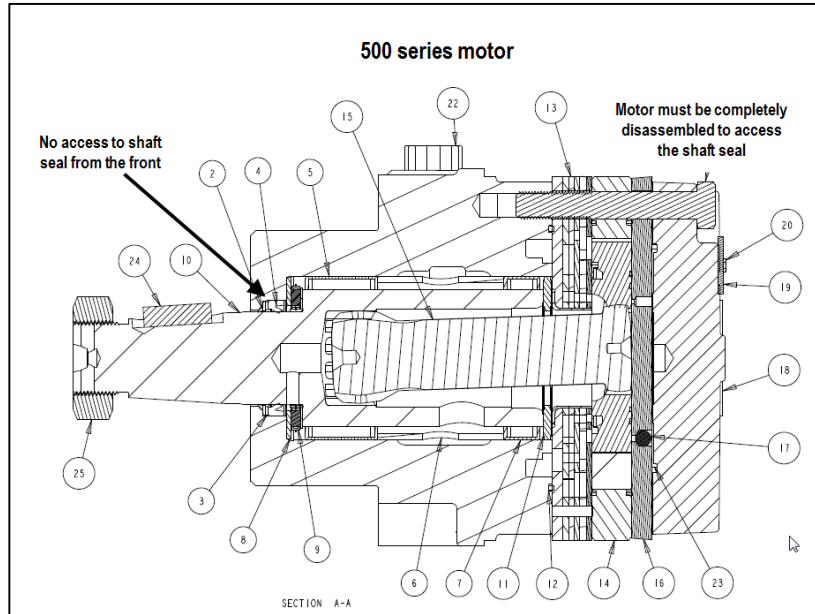
The **rear** portion of the motor is **identical** and all major shaft components still rest on top of the front housing bearing internally, but with the 505 series the unit can be **serviced** by **removing** the **front flange** (seal carrier) and lifting the parts through the housing while the **rear** of the unit can **remain assembled**. With this design, the **front** and **rear** housing **bearings** do **not need** to be **pulled** making it far **easier** to **service** and/or change out parts.

# The 505 Series Difference...

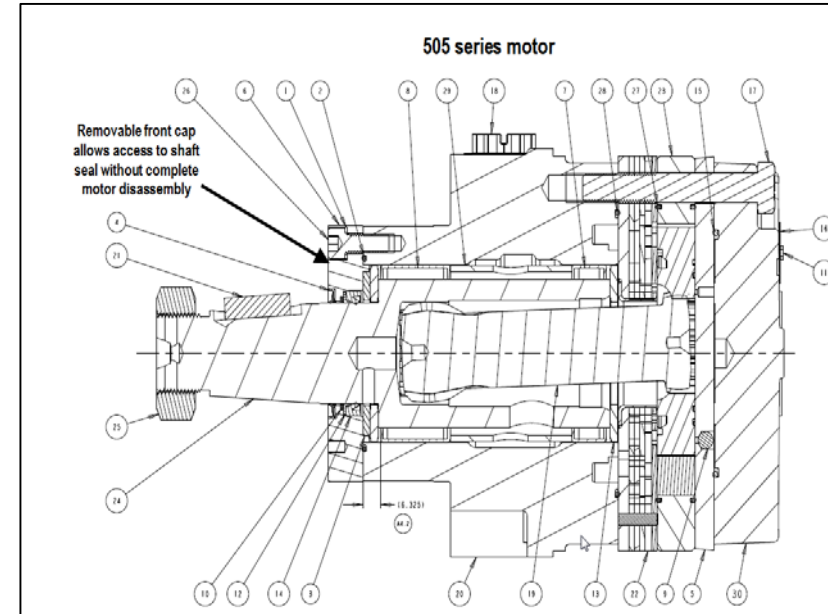
## SERVICEABILITY ADVANTAGE

### The Difference

### 505 / 506 (RE) SERIES HYDRAULIC MOTORS



## 500 Series



## 505 Series

## The Advantage

### 505 / 506 (RE) SERIES HYDRAULIC MOTORS

## The 505 Series Advantage...

- No customer re-engineering required.
- The outside envelope is identical to the 500 series...making it a “drop in” replacement.
- The external dust seal provides an additional layer of shaft seal protection against environmental contaminants.
- Replacing a failed or worn out shaft seal is quick and easy, saving time and money.
- Shaft seal life may be extended in applications that see a greater amount of side loading.



# The 505 Series Options...

## 17 DISPLACEMENT OPTIONS

100 cm<sup>3</sup> | 06 in<sup>3</sup>

**120 cm<sup>3</sup> | 07 in<sup>3</sup>**

**160 cm<sup>3</sup> | 10 in<sup>3</sup>**

**200 cm<sup>3</sup> | 12 in<sup>3</sup>**

**230 cm<sup>3</sup> | 14 in<sup>3</sup>**

**260 cm<sup>3</sup> | 16 in<sup>3</sup>**

**300 cm<sup>3</sup> | 18 in<sup>3</sup>**

**350 cm<sup>3</sup> | 20 in<sup>3</sup>**

**375 cm<sup>3</sup> | 24 in<sup>3</sup>**

400 cm<sup>3</sup> | 25 in<sup>3</sup>

**470 cm<sup>3</sup> | 26 in<sup>3</sup>**

516 cm<sup>3</sup> | 31 in<sup>3</sup>

**540 cm<sup>3</sup> | 32 in<sup>3</sup>**

**620 cm<sup>3</sup> | 38 in<sup>3</sup>**

640 cm<sup>3</sup> | 39 in<sup>3</sup>

**750 cm<sup>3</sup> | 45 in<sup>3</sup>**

930 cm<sup>3</sup> | 58 in<sup>3</sup>

(12) Standard Catalog Items

(5) Non-Standard Available Options



## The Options

## HOUSINGS

# The 505 Series Options...

## 8 SAE-A FLANGE HOUSING OPTIONS

A11 – 2 Hole, 7/8-14 UNF

A18 – 2 Hole, 1/2" BSP

**A31 – 4 Hole, 7/8-14 UNF**

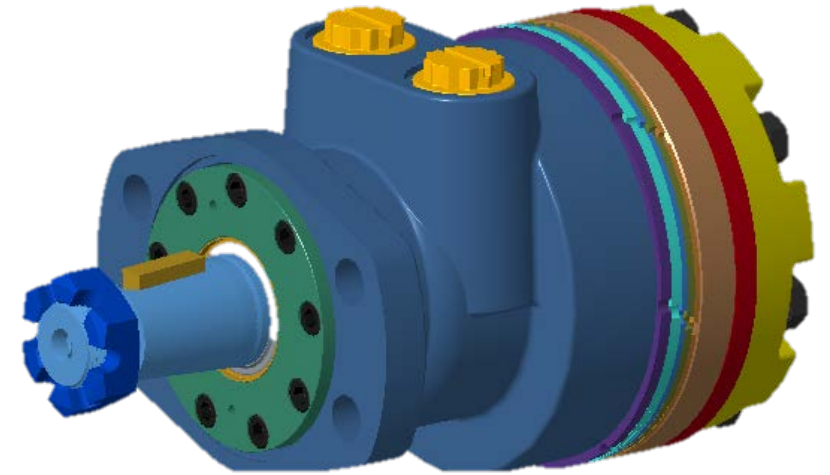
**A38 – 4 Hole, 1/2" BSP**

**A51 – 6 Hole, 7/8-14 UNF**

**A58 – 6 Hole, 1/2" BSP**

A5N – 6 Hole, 3/4 JIS

AT1 – 4 Hole , 7/8-14 UNF, No Pilot Seal Groove



(4) Standard Catalog Items

(4) Non-Standard Available Options

## The Options

## HOUSINGS

# The 505 Options...

## 5 WHEEL FLANGE HOUSING OPTIONS

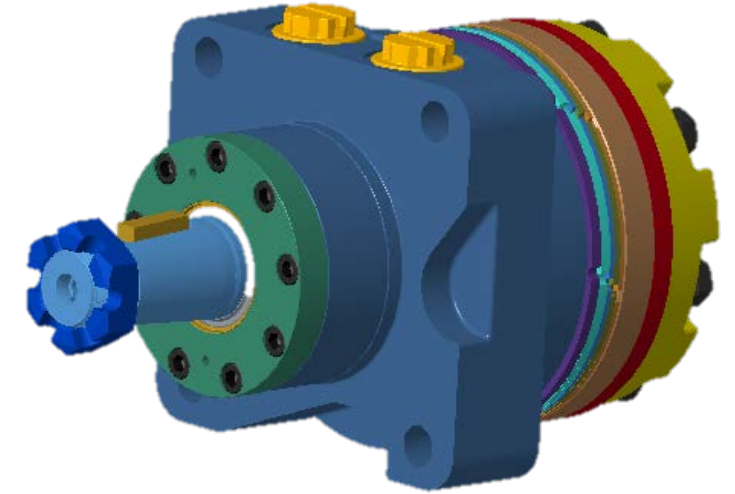
**W31 – 4 Hole, 7/8-14 UNF**

W35 – 4 Hole 9/16-18 UNF

**W38 – 4 Hole, G 1/2**

W3H – 4 Hole, G 1/2 (Special for Kinshofer)

C31 – 4 Hole , 7/8-14 UNF, SAE-C Front Mount



- (2) Standard Catalog Items
- (3) Non-Standard Available Options



# The 505 Series Options...

## 13 SHAFTS (STANDARD CATALOG OPTIONS)

02 – 1" 6B Spline

15 – 1" Straight Extended

03 – 1" 6B Spline Extended

20 – 1-1/4" Straight

07 – 1-1/4" Straight Extended

21 – 32mm Straight

08 – 32mm Straight Extended

22 – 1-1/4" Tapered

09 – 14 Tooth Spline Extended

23 – 14 Tooth Spline

10 – 1" Straight

25 – 1-1/4" Tapered Extended

12 – 25mm Straight

The 505 Series also includes an additional **25 non-standard** shaft options to accommodate interchangeability with most available competitive product variations.

## The Options

## OPTIONS

# The 505 Options...

## MISCELLANEOUS OPTIONS

- All Standard Paint Options
- Relief Valves Up To 207 bar (3500 PSI)
- Shock Valves Up To 207 bar (3500 PSI)
- Slotted, Solid & Lock Nuts On Tapered Shafts
- All Standard Speed Sensor Options Available
- Hydraulic Declutch
- Freeturning Rotor
- Viton Shaft Seals
- Milled Housing Options

## Summary

IN  
CONCLUSION

## In Conclusion...

- The 505 Series motor is by all practical purposes identical to the 500 Series in **Fit**(Mount), **Form**(Installation) and **Function**(Performance).
- The 505 Series was **designed** with field **serviceability** as the driving factor and also may provide **greater shaft seal life** in applications that see a higher amount of side load due to the fact that the sealing components are enclosed in the seal carrier vs. a rigid bore in the housing casting.
- The 505 Series provides **all** the **benefits** of the 500 Series and adds ease of field serviceability and quickness of parts interchangeability making it a **solid replacement** for the RE 500 Series motor.

HYDRAULIC MOTORS • HYDRAULIC MOTOR | BRAKE UNITS • STEERING UNITS •  
HYDRAULIC BRAKES • HYDRAULIC PUMPS • FLOW DIVIDERS

[WHITEDRIVEPRODUCTS.COM](http://WHITEDRIVEPRODUCTS.COM)

**Delivering The Power  
To Get Work Done!**

