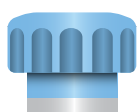
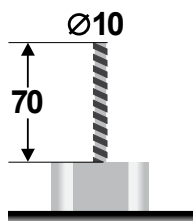


# PRODUCT TGM B DOUBLE



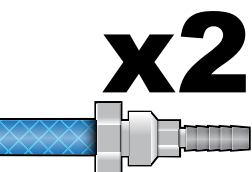
Quick fixing nut  
Schnellspannmutter  
Fijación rapida  
Fissaggio rapido  
Ecrou à fixation rapide



Threaded stud  
(any other sizes available on request)  
Befestigung  
(andere Sondemarabmessungen  
lieferbar nach anfrage)  
Fijación  
(otras dimensiones disponibles a  
petición)  
Perno filettato  
(qualsiasi altre dimensioni disponibili  
su richiesta)  
Tige filetée  
(autres dimensions disponible sur  
demande)

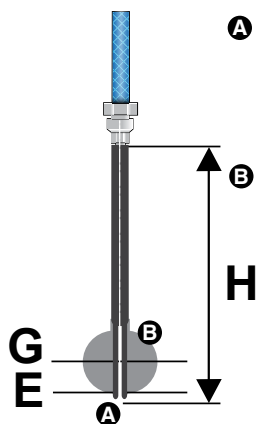
**1Bar** <sup>14.51PSI</sup>  
**MAXI**

Inflated pressure  
Druck empfohlen  
Presión hinchada  
Pressione di gonfiamento  
Pression maximum



**ON REQUEST**

Twin feeding tube  
Doppelter Luftanschluss  
Doble toma de aire  
Doppia alimentazione  
Double alimentation



**A** Deflated  
Flach  
Deshinchado  
Sgonfiato  
A plat

**B** Inflated  
Aufgeblasen  
Hinchado  
Gonfiato  
Gonflé

**H**

**G**



**EN** Air bag especially used for short neck bottles.

**DE** Standard Greiferschlauch der normalerweise für kurzen hals von Flaschen.

**ES** Tubo neumático generalmente utilizado para botellas co cuello corto

**IT** Tubo gonfiabile utilizzato generalmente per collo corto.

**FR** Tube gonflable généralement utilisé pour les bouteilles à cols courts.

Ref	E (mm)	L(mm)	H(mm) +/- 2mm	G(mm) +/- 2mm
<b>TGM 16 B</b>	16	1340	93	28
<b>TGM 18 B</b>	18	1340	95	35
<b>TGM 20 B</b>	20	1340	96	39
<b>TGM 22 B</b>	20	1340	98	43
<b>TGM 25 B</b>	20	1340	100	48
<b>TGM 30 B</b>	20	1340	103	58
<b>TGM 35 B</b>	22	1340	105	69
<b>TGM 40 B</b>	22	1340	109	78
<b>TGM 45 B</b>	22	1340	112	85
<b>TGM 50 B</b>	22	1340	115	98
<b>TGM 55B</b>	22	1340	118	108

# System Res

your partner for hollow glass industry