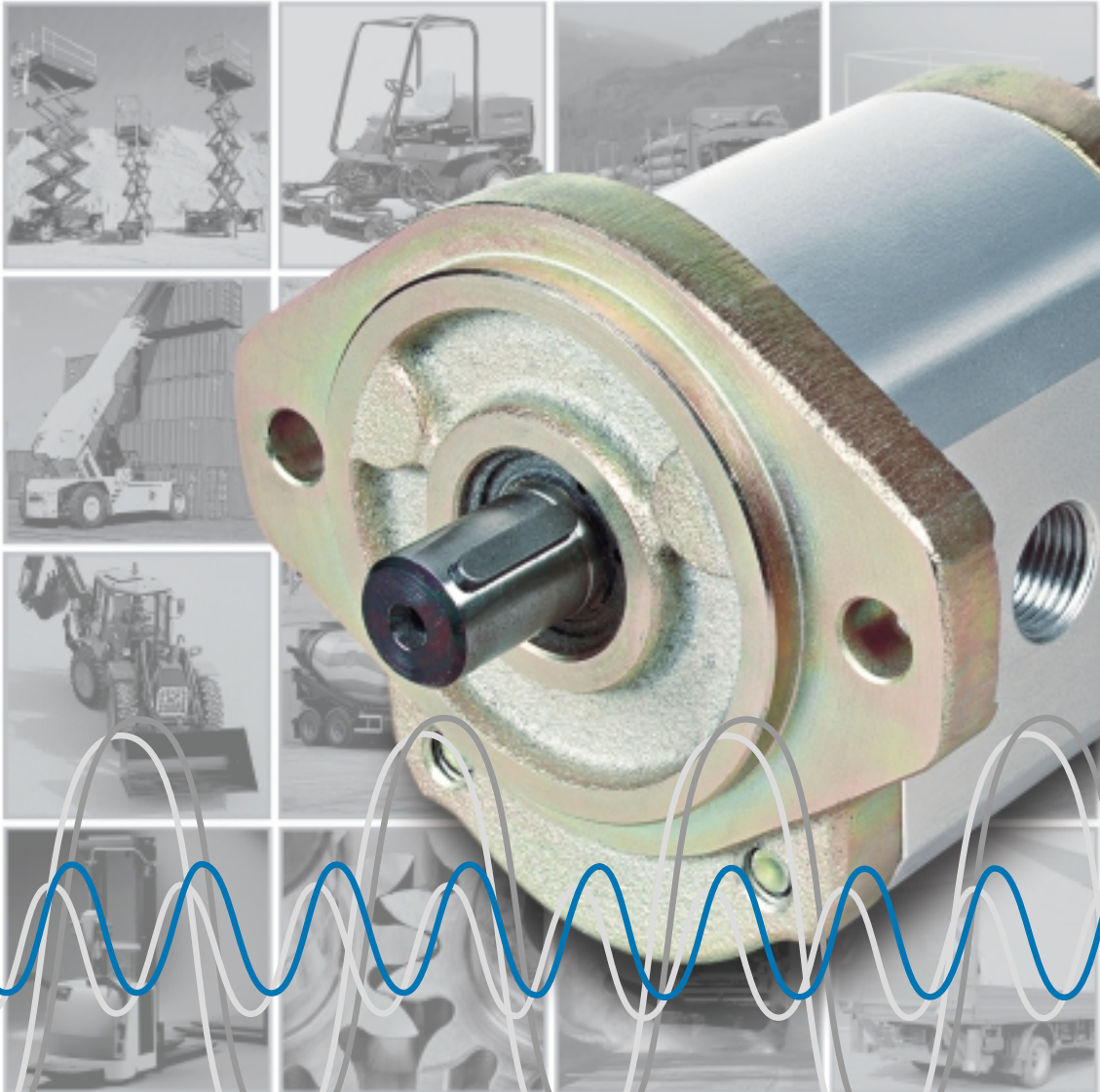




**HIGH PRESSURE GEAR PUMP WQ900  
SUPER QUIET & LOW PULSATION**

---





## THE POWER OF THE WQ900 A SERIES \_\_\_\_\_

Haldex Hydraulics is one of the world's leading manufacturers of hydraulic pumps. In recent years we have focused on important markets, such as materials handling and vehicles, and now the result are in: a series of high-performance hydraulic pumps. The WQ900 series builds on the versatile technical platform represented by the W series.

WQ900 High Pressure Gear Pumps are optimized for demanding work, with harsh weather conditions, rugged operations and long service intervals. The WQ900 series is a range of cost-efficient group II pumps for all applications in which the customer's demands for quality and reliability are particularly high. The "Q" stands for super "quiet" operation and

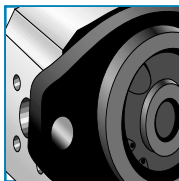
outstanding properties of the WQ900 result from: 1<sup>st</sup> a new and carefully engineered tooth geometry.

2<sup>nd</sup> an innovative approach to gear flank engagement.

3<sup>rd</sup> a reduced volume of trapped oil and

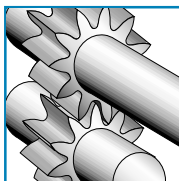
4<sup>th</sup> advanced trapped oil management.

The size of pressure pulsation from the pumps is reflected in the pump noise level and the pressure pulsation is minimized to 25%. We achieved a reduction for the pressure pulsation of 75% by the newly developed, computer generated gear design for the WQ900 pumps of Haldex Hydraulics. The noise levels are shown on page 10-11.



\_\_\_\_\_ **FLANGE CODE 03, 06, 07, 12** \_\_\_\_\_

**4 - 8**

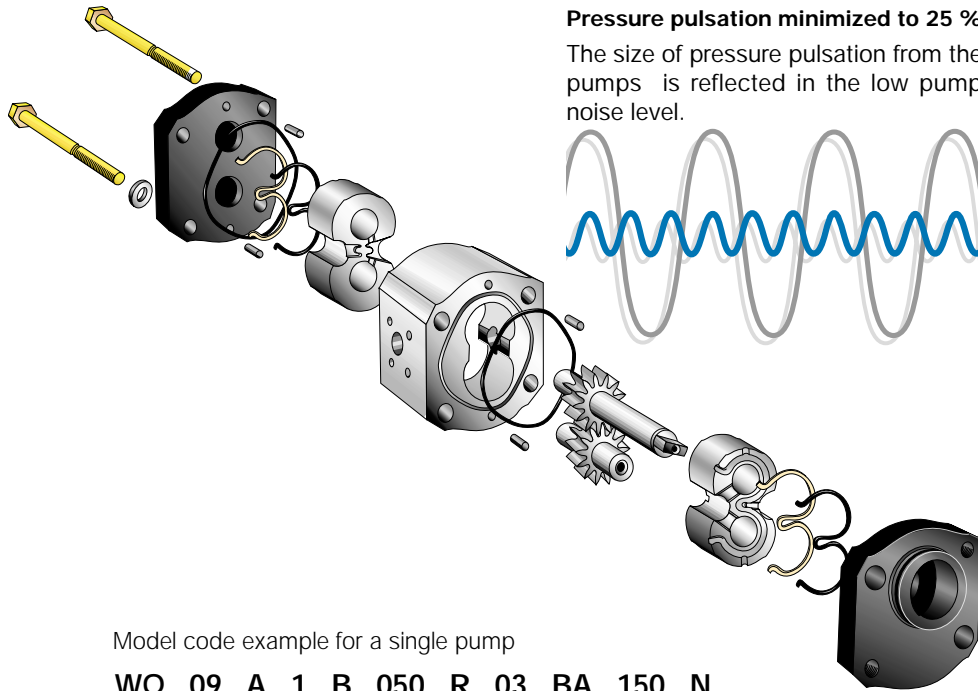


\_\_\_\_\_ **MULTIPLE PUMPS** \_\_\_\_\_

**9**

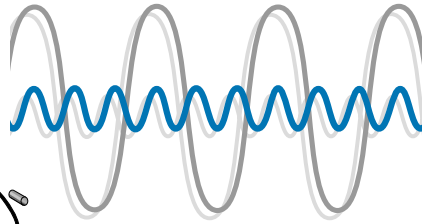
\_\_\_\_\_ **SOUND POWER CURVES** \_\_\_\_\_

**10 - 11**



### Pressure pulsation minimized to 25 %

The size of pressure pulsation from the pumps is reflected in the low pump noise level.



Model code example for a single pump

**WQ 09 A 1 B 050 R 03 BA 150 N**  
 ① ② ③ ④ ⑤ ⑥ ⑦ ⑧ ⑨ ⑩ ⑪

- |                              |                     |
|------------------------------|---------------------|
| ① = Type                     | ⑦ = Rotation        |
| ② = Range                    | ⑧ = Mounting flange |
| ③ = Design                   | ⑨ = Drive shaft     |
| ④ = # of sections            | ⑩ = Portings        |
| ⑤ = Seal material            | ⑪ = Valve options   |
| ⑥ = Displacement per section |                     |

## WQ900 DESCRIPTION

The WQ900 pumps are part of the W-family of gear pumps. The WQ900 pumps come in single or multiple configuration of up to four sections. The basic pump is of a three piece modular design. Mounting flange and rear cover are of cast iron. The pump body is manufactured from high strength aluminium alloy.

For optimum strength, gears and shafts are precision machined in one piece. The 13-tooth gear geometry has been optimized for low noise level.

All shaft bearing surfaces are Teflon® coated and designed for long service life. They are continually cooled and lubricated by a controlled flow of fresh oil. This enables operation across a wide speed range at very high loads.

Multiple pumps in the WQ900 range are very compact. The drive shaft is capable of transmitting high torque even to the rear section. Each section has its own inlet and pressure ports. Single inlet features are optional for 2 and 3 section unit.

A wide range of mounting flanges and port sizes are available to meet international standards.

### General data

Displacement $V$	5 - 23cc/rev
Speed $n$	500 - 4000 rpm
Pressure	
rated pressure $p_r$	up to 230 bar
intermittent pressure $p_{II}$	up to 255 bar
peak pressure $p_{III}$	up to 276 bar
Operating temperatures $t$	up to 105° C
Average volumetric efficiency	97%
The maximum values for $n$ , $p_r$ and $t$ for a given pump specification may be applied simultaneously.	

### Options

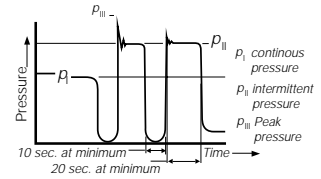
- SAE mounting flange, through bolt model.
- Rectangular flanges
- Splined, tapered or straight shaft with key, tang shaft.
- Thread ports or flange ports.
- Clockwise or anti-clockwise rotation.
- Integrated valve features.
- Single inlet for multiple units.

## PERFORMANCE DATA

### Operating pressure range

**Inlet port:** continuous, minimum -0,20 bar  
 intermittent, minimum -0,35 bar  
 maximum +2,00 bar

**Outlet port** (See tables on pages 4-7)



Product has been tested to 1,000,000 cycles at  $p_r$ . Pressure  $p_r$  is permitted at maxi. 20 sec loaded following 10 sec minimum unloaded.

Product has been tested to 500,000 cycles at  $p_{II}$ . Above represents performance which can be expected from units incorporating flange flange port styles.

### Speed range

Minimum speed for all pump sizes is  $n=500$  rpm at maximum pressure  $p_r$ .

Maximum speed for single pumps depends on the pump model in question and can be identified from tables on pages 4-7 for respective models.

Maximum speed for multiple pumps is the lowest one specified (See tables on pages 4-7) for any section of the configuration in question.

Noise performance data according to page 10-11. Hydraulic fluids. The use of HL-or HLP-hydraulic oil according to DIN 51 524 is recommended.

The permissible viscosity for all WQ9A pumps ranges from 750 to 10 mm<sup>2</sup>/s. The recommended operating viscosity range is from 40 to 16 mm<sup>2</sup>/s.

The permissible cold start viscosity is 2000 mm<sup>2</sup>/s. We recommend to contact Haldex Hydraulics before using fire resistant or bio-degradable fluids.

### Temperature range

Amb. temperature	mini. -25° C	maxi. +80° C
Fluid temperature		
continuous operation	maxi. +90° C	
short term operation	maxi. +105° C	

### Please note

Viscosities -when operating at above temperature limits-have to remain within the range specified under "Hydraulic Fluids".

### Fluid cleanliness

Fluid cleanliness according to ISO 4406/1986 Code 18/14 or better is required in order to assure the pump's high level of efficiency in the long term.

### Drive arrangement

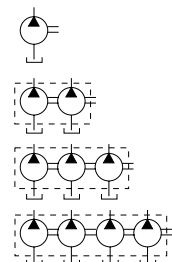
Flexible couplings are preferred for direct drives. Please contact Haldex Hydraulics for indirect drive requirements. Pumps with outboard side load bearing are available.

### Mounting position

As required.

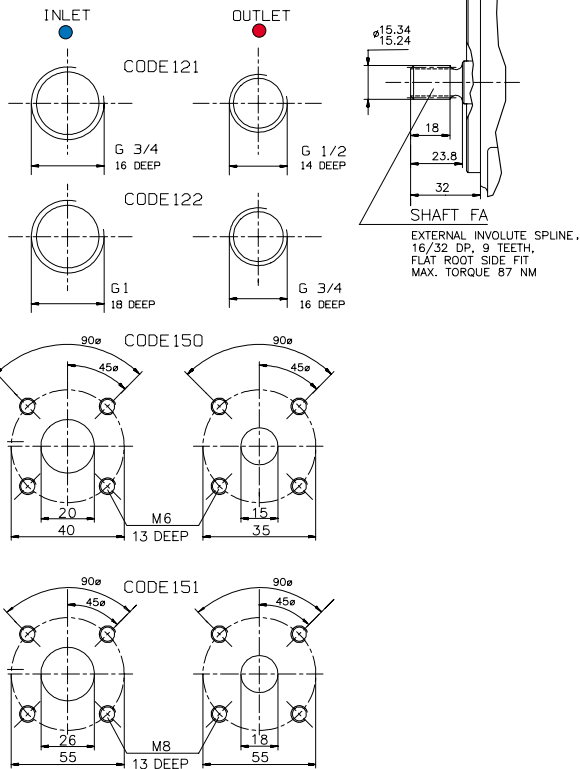
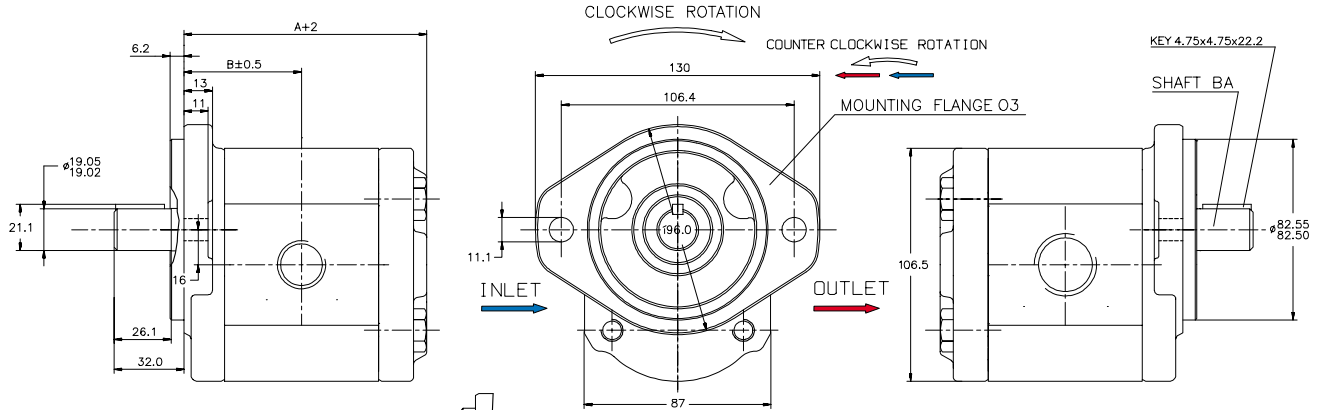
### Symbols

Single pump  
 Double pump  
 Triple pump  
 Quadruple pump





## FLANGE CODE 03 (SAE A 2 BOLT)

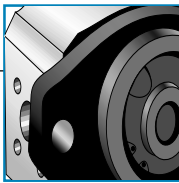


Model code example for a single pump

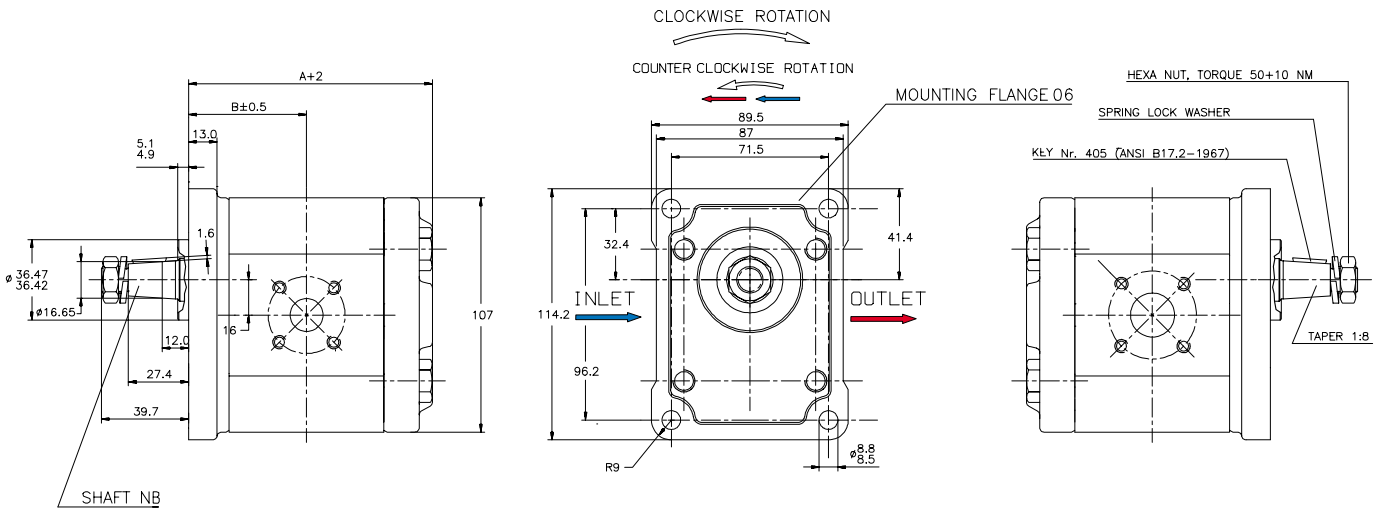
**WQ 09 A 1 B 050 R 03 BA 150 N**  
 ① ② ③ ④ ⑤ ⑥ ⑦ ⑧ ⑨ ⑩ ⑪

- ① = Type WQ - Pump
- ② = Range 09 - 900
- ③ = Design A
- ④ = # of sections 1 - Single  
2 - Duplex  
3 - Triplex  
4 - Quadruplex
- ⑤ = Seal material B - Buna
- ⑥ = Displacement per section (See Code Displ. below)
- ⑦ = Rotation  
R - Clockwise  
L - Counter clockwise
- ⑧ = Mounting flange  
03 SAE A 2-Bolt
- ⑨ = Drive shaft  
BA SAE A Key  $\varnothing$  0,75"  
FA SAE A Spline 9-t
- ⑩ = Portings  
121 - G3/4" + G1/2" BSPP  
122 - G1" + G3/4" BSPP  
150 - 20 mm + 15 mm 4-b flange  
151 - 26 mm + 18 mm 4-b flange
- ⑪ = Valve options N - None

Size	Rated pressure (bar)		Maximum speed (rpm)		Dimensions		Weight (approx.) [kg]
	Shaft 'BA'	Shaft 'FA'	Port. '121'/'150'	Port. '122'/'151'	A [mm]	B [mm]	
050 - 5,1cc	230	230	4000	-	90,1	43,3	3,7
060 - 6,2cc	230	230	4000	-	91,6	44,0	3,8
080 - 8,3cc	230	230	4000	-	94,6	45,5	3,9
110 - 11,3cc	230	230	3600	-	99,0	47,7	4,1
140 - 14,5cc	230	230	3300	-	103,5	50,0	4,2
160 - 16,5cc	230	230	3000	-	106,4	51,4	4,3
190 - 19,6cc	230	230	3000	-	110,9	53,7	4,4
230 - 23,7cc	207	207	2800	3500	116,8	56,6	4,6

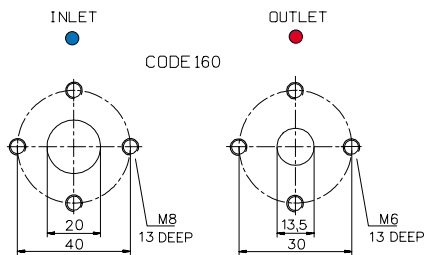


## FLANGE CODE 06

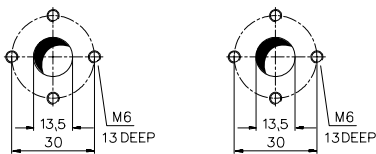


Model code example for a single pump

**WQ 09 A 1 B 050 R 06 NB 160 N**  
 ① ② ③ ④ ⑤ ⑥ ⑦ ⑧ ⑨ ⑩ ⑪

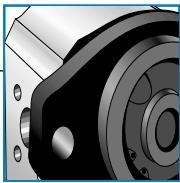


For pump displacement 050-080  
 CODE 159

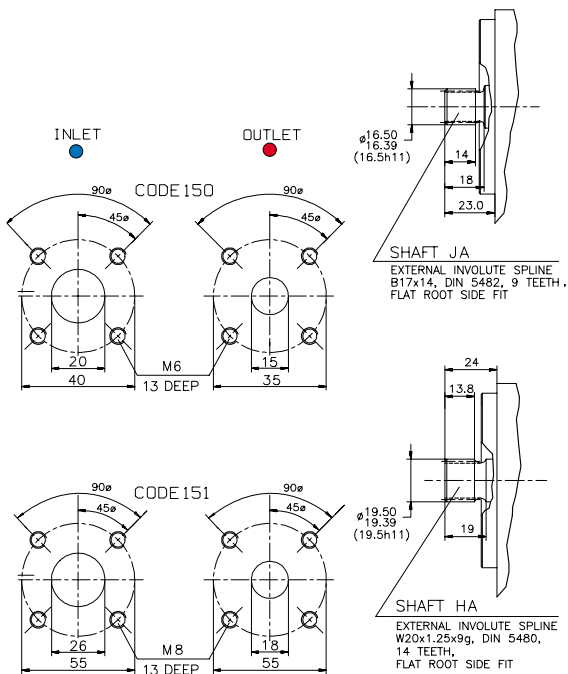
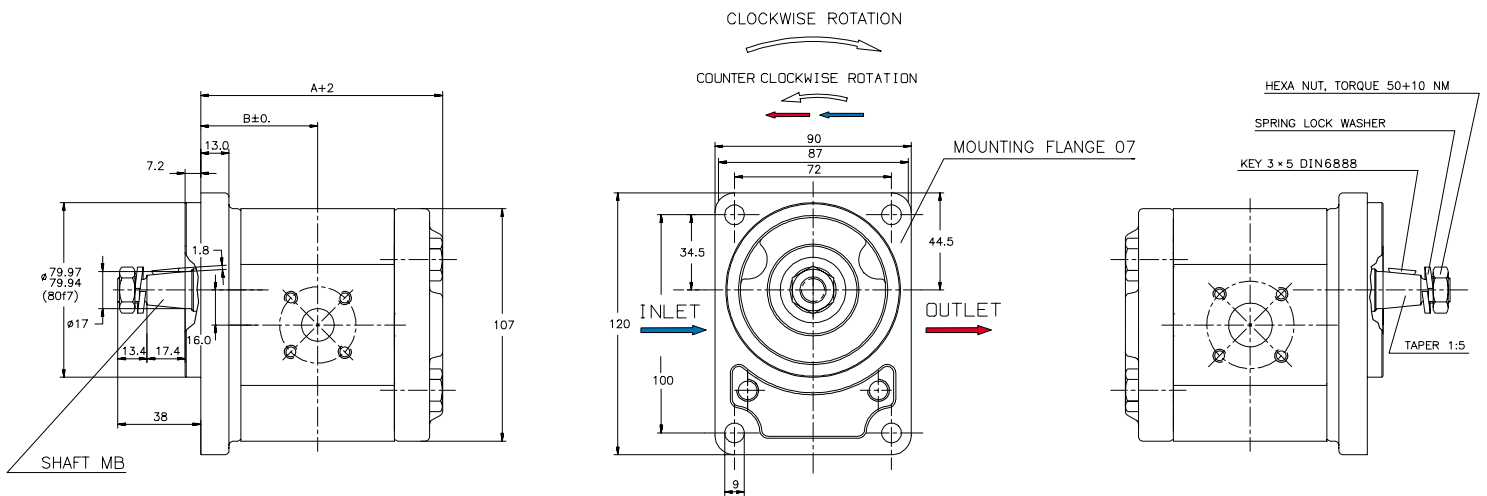


- ① = Type WQ - Pump
- ② = Range 09 - 900
- ③ = Design A
- ④ = # of sections  
 1 - Single  
 2 - Duplex  
 3 - Triplex  
 4 - Quadruplex
- ⑤ = Seal material B - Buna
- ⑥ = Displacement per section  
 (See Code Displ. below)
- ⑦ = Rotation  
 R - Clockwise  
 L - Counter clockwise
- ⑧ = Mounting flange  
 06 Rect. Ø 36,5 mm pilot
- ⑨ = Drive shaft  
 NB European Tapered shaft 1:8
- ⑩ = Portings  
 160 - 20 mm + 13,5 mm
- ⑪ = Valve options N - None

Size	Rated pressure (bar)	Maximum speed (rpm) Port code '160'	Dimensions		Weight (approx.) [kg]
			A [mm]	B [mm]	
050 - 5,1cc	230	4000	90,1	43,3	3,7
060 - 6,2cc	230	4000	91,6	44,0	3,8
080 - 8,3cc	230	4000	94,6	45,5	3,9
110 - 11,3cc	230	3600	99,0	47,7	4,1
140 - 14,5cc	230	3300	103,5	50,0	4,2
160 - 16,5cc	230	3000	106,4	51,4	4,3
190 - 19,6cc	230	3000	110,9	53,7	4,4
230 - 23,7cc	207	2800	116,8	56,6	4,6



## FLANGE CODE 07

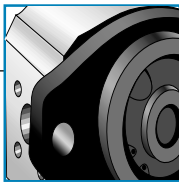


Model code example for a single pump

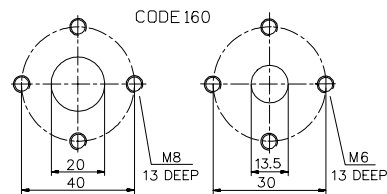
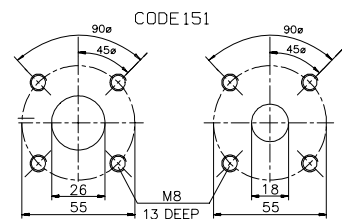
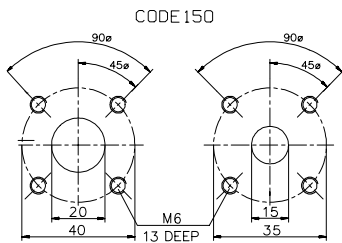
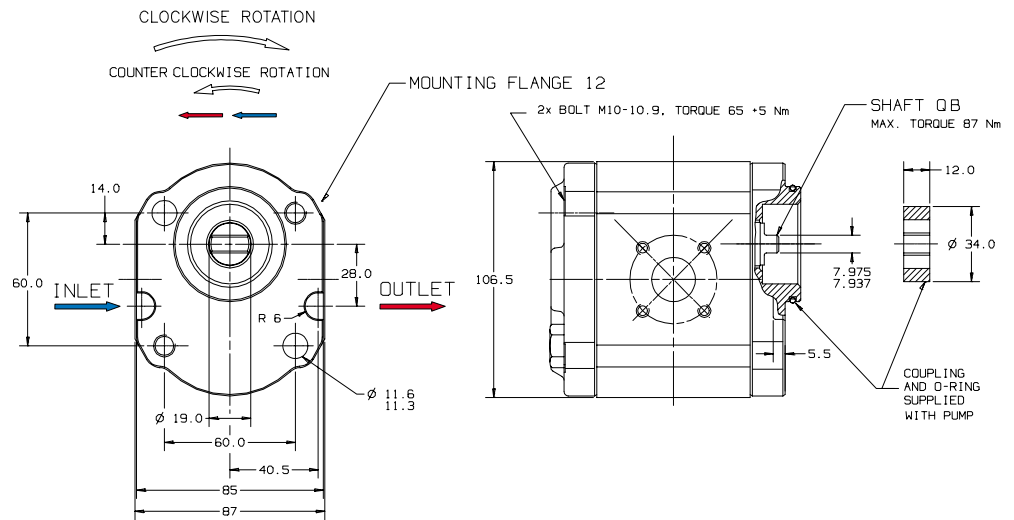
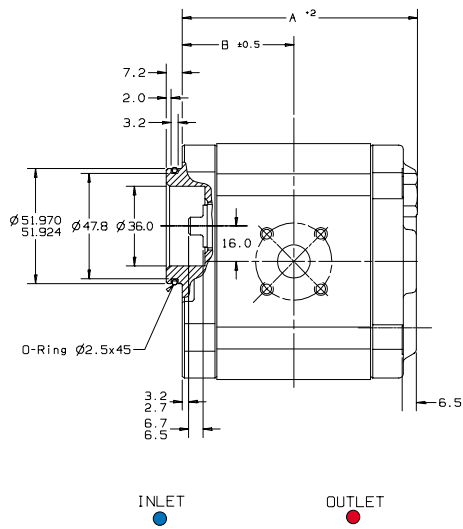
**WQ 09 A 1 B 060 R 07 MB 150 N**  
 ① ② ③ ④ ⑤ ⑥ ⑦ ⑧ ⑨ ⑩ ⑪

- ① = Type WQ - Pump
- ② = Rated 09 - 900
- ③ = Design A
- ④ = # of sections 1 - Single
- ⑤ = Seal material B - Buna
- ⑥ = Displacement per section (See table below)
- ⑦ = Rotation  
R - Clockwise  
L - Counter clockwise
- ⑧ = Mounting flange  
07 Rect.  $\phi$  80 mm pilot
- ⑨ = Drive shaft  
MB European Tapered shaft 1:5  
JA DIN 5482 Spline 9-t  
HA DIN 5480 Spline 14-t
- ⑩ = Portings  
150 - 20 mm + 15 mm 4-b flange  
151 - 26 mm + 18 mm 4-b flange
- ⑪ = Valve options N - None

Size	Rated pressure (bar)	Maximum speed (rpm)		Dimensions		Weight (approx.) [kg]
		Port. c. '150'	Port. c. '151'	A [mm]	B [mm]	
050 - 5,1cc	230	4000	-	90,1	43,3	3,7
060 - 6,2cc	230	4000	-	91,6	44,0	3,8
080 - 8,3cc	230	4000	-	94,6	45,5	3,9
110 - 11,3cc	230	3600	-	99,0	47,7	4,1
140 - 14,5cc	230	3300	-	103,5	50,0	4,2
160 - 16,5cc	230	3000	-	106,4	51,4	4,3
190 - 19,6cc	230	3000	-	110,9	53,7	4,4
230 - 23,7cc	207	2800	3500	116,8	56,6	4,6



## FLANGE CODE 12



Model code example for a single pump

**WQ 09 A 1 B 060 R 12 QB 150 N**  
 ① ② ③ ④ ⑤ ⑥ ⑦ ⑧ ⑨ ⑩ ⑪

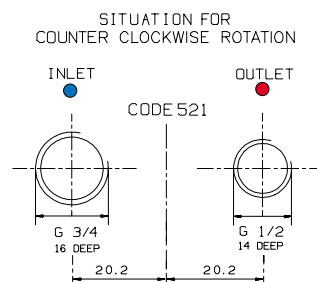
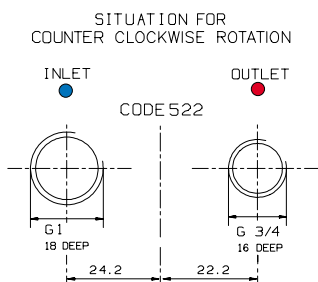
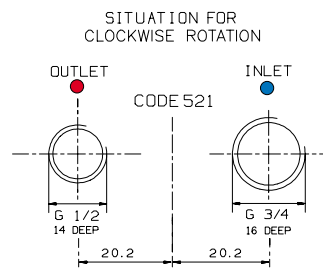
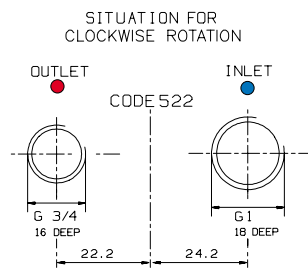
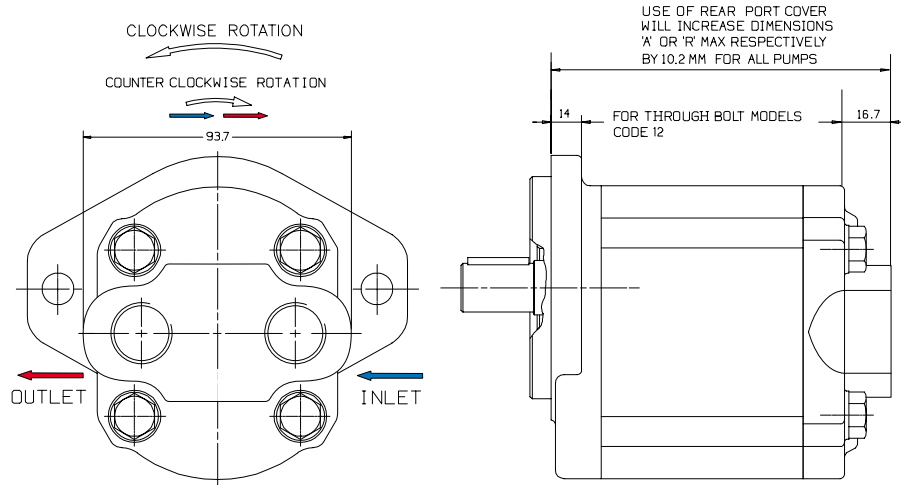
- ① = Type WQ - Pump
- ② = Range 09 - 900
- ③ = Design A
- ④ = # of sections 1 - Single
- ⑤ = Seal material B - Buna
- ⑥ = Displacement per section (See table below)
- ⑦ = Rotation  
R - Clockwise  
L - Counter clockwise
- ⑧ = Mounting flange  
12 Through-bolt Ø 52 mm pilot
- ⑨ = Drive shaft  
QB Wet Tang
- ⑩ = Portings  
150 - 20 mm + 15 mm 4-b flange  
151 - 26 mm + 18 mm 4-b flange  
160 - 20 mm + 13,5 mm 4-b flange
- ⑪ = Valve options N - None

Size	Rated pressure (bar) Shaft 'QB'	Maximum speed (rpm)		Dimensions		Weight (approx.) [kg]
		Port. '150'/'160'	Port. '151'	A [mm]	B [mm]	
050 - 5,1cc	230	4000	-	87,6	40,8	3,7
060 - 6,2cc	230	4000	-	89,1	41,5	3,8
080 - 8,3cc	230	4000	-	92,1	43,0	3,9
110 - 11,3cc	230	3600	-	96,5	45,2	4,1
140 - 14,5cc	230	3300	-	101,0	47,5	4,2
160 - 16,5cc	230	3000	-	103,9	48,9	4,3
190 - 19,6cc	230	3000	-	108,4	51,2	4,4
230 - 23,7cc	207	2800	3500	114,3	54,1	4,6

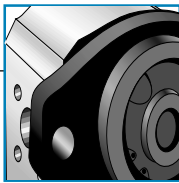


## REAR PORT

Rear port end cover can be combined with all flange and shaft options. All technical data from the preceding pages apply to this model.



Size	Rated pressure (bar)	Maximum speed (rpm)		Weight (approx.) [kg]
		Port. '521'	Port. '522'	
050 - 5,1cc	can be taken from Tables on pages 4-7	4000	-	3,7
060 - 6,2cc		4000	-	3,8
080 - 8,3cc		4000	-	3,9
110 - 11,3cc		3600	-	4,1
140 - 14,5cc		3300	-	4,2
160 - 16,5cc		3000	-	4,3
190 - 19,6cc		3000	-	4,4
230 - 23,7cc		2800	3500	4,6



## MULTIPLE PUMPS

The two following parameters are of the utmost importance when selecting multiple pumps and must never be exceeded:

- Drive shaft load index "A"
- Internal coupling load index "K"

Maxi. load index K 5240

for double pump

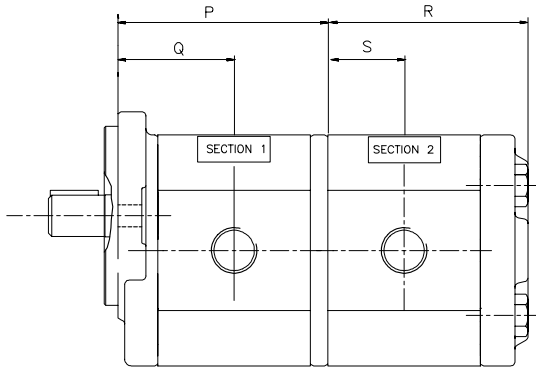
$$K = (p_2 \times V_2)$$

for triple pump

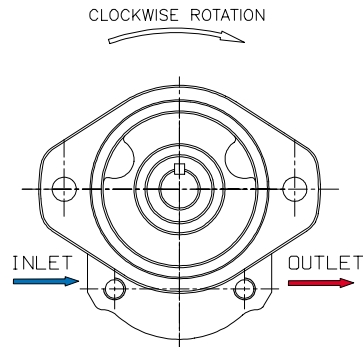
$$K = (p_2 \times V_2) + (p_3 \times V_3)$$

for quadruple pump

$$K = (p_2 \times V_2) + (p_3 \times V_3) + (p_4 \times V_4)$$



Shaft end section



- Maximum drive shaft load index "A", see table below for double pump

$$A = (p_1 \times V_1) + (p_2 \times V_2)$$

for triple pump

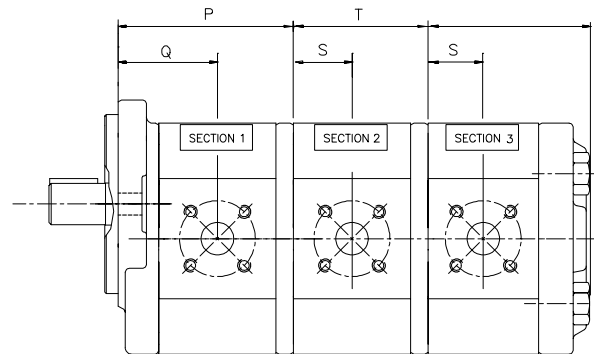
$$A = (p_1 \times V_1) + (p_2 \times V_2) + (p_3 \times V_3)$$

for quadruple pump

$$A = (p_1 \times V_1) + (p_2 \times V_2) + (p_3 \times V_3) + (p_4 \times V_4)$$

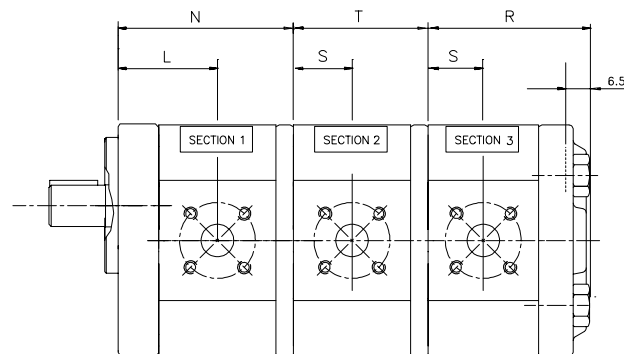
Drive shaft	Load index A	Drive shaft	Load index A
BA	10488	MB	10488
FA	5100	NB	10488
JA	6215	QB	5012

Note: P = actual pressure in bar, V = applicable displacement from Table page 4-7.



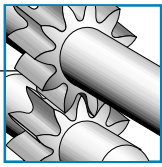
In multiple pumps, shaft end section must have largest displacement. Each consecutive section must have displacement equal to or smaller than section preceding.

Haldex Hydraulics multiple pumps are also available with reduced number of inlets. Please contact Haldex Hydraulics for details. Please, contact Haldex Hydraulics for pump applications requiring independently sealed sections.



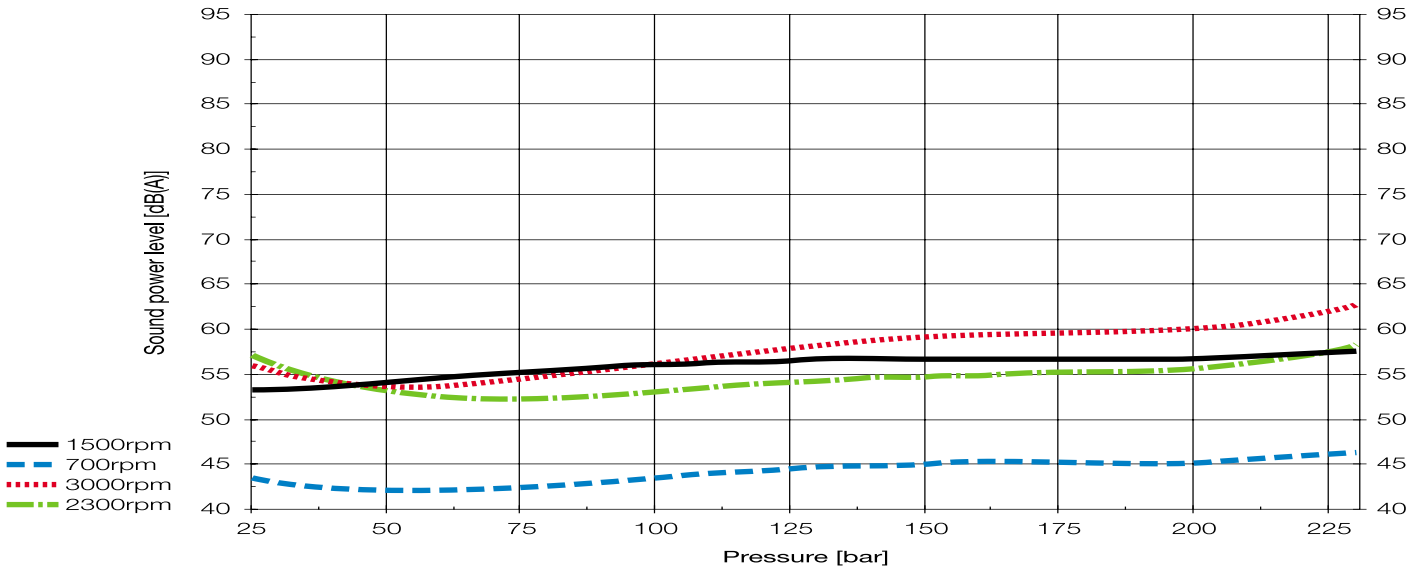
At left are shown the dimensions for the through bolt type pumps.

Size	P mm	Q mm	Weight kg	R mm	S mm	Weight kg	T mm	Weight kg	N mm	L mm	Weight kg
	Shaft end section				Rearsection		2nd & 3rdsection				A1-section
060 - 6,2cc	77,6	44,0	3,1	73,4	25,6	2,7	59,1	1,8	75,1	41,5	2,7
080 - 8,3cc	80,0	45,5	3,2	76,4	27,0	2,8	62,1	1,9	78,1	41,5	2,7
110 - 11,3cc	85,0	47,7	3,4	80,8	29,2	3,0	66,5	2,1	82,5	45,2	3,0
140 - 14,5cc	89,5	50,0	3,5	85,2	31,5	3,1	71,0	2,2	87,0	47,5	3,1
160 - 16,5cc	92,4	51,4	3,6	88,1	33,0	3,2	73,9	2,3	89,9	48,9	3,2
190 - 19,6cc	96,9	53,7	3,7	92,7	35,2	3,4	78,4	2,4	94,4	51,2	3,4
230 - 23,7cc	102,8	56,6	3,9	98,6	38,2	3,5	84,3	2,6	100,3	54,1	3,5

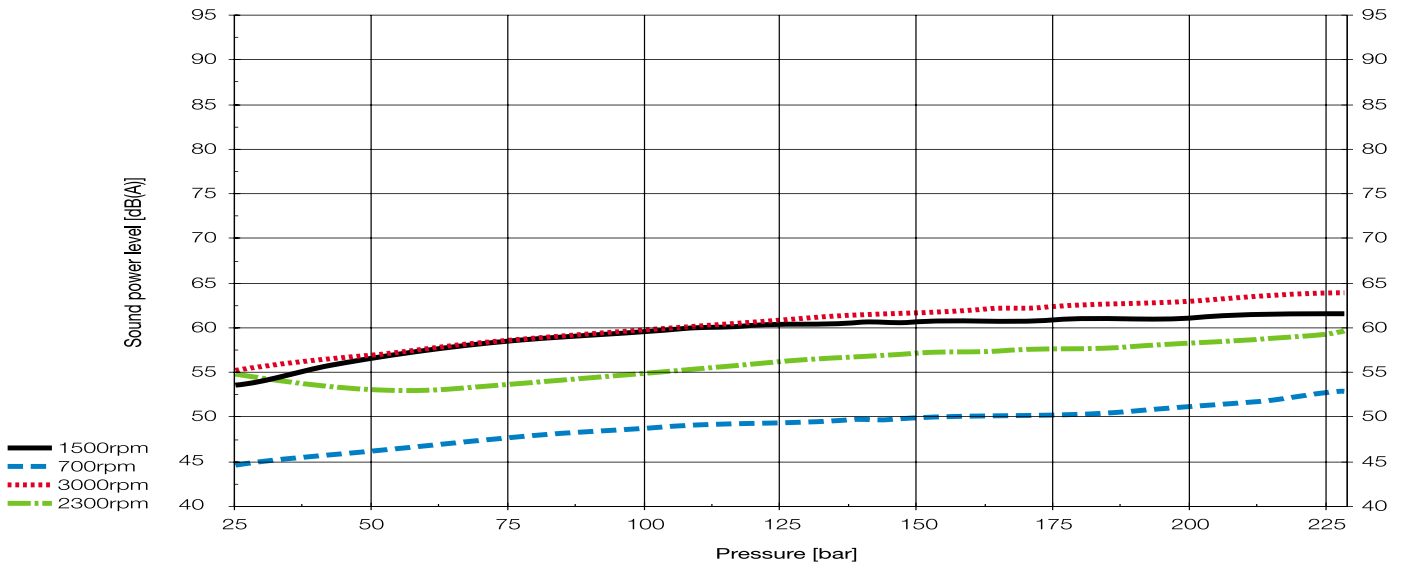


# SOUND POWER LEVEL ACCORDING TO DIN 45635, AT 50°C, 40 cSt

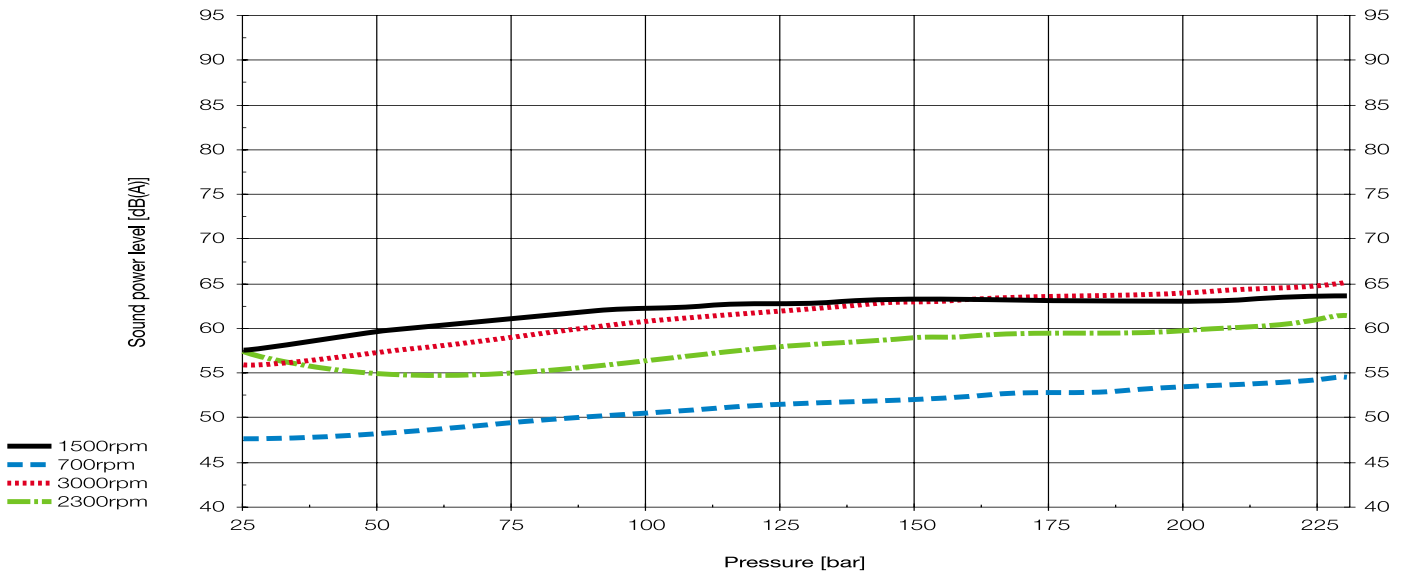
WQ9A1-8



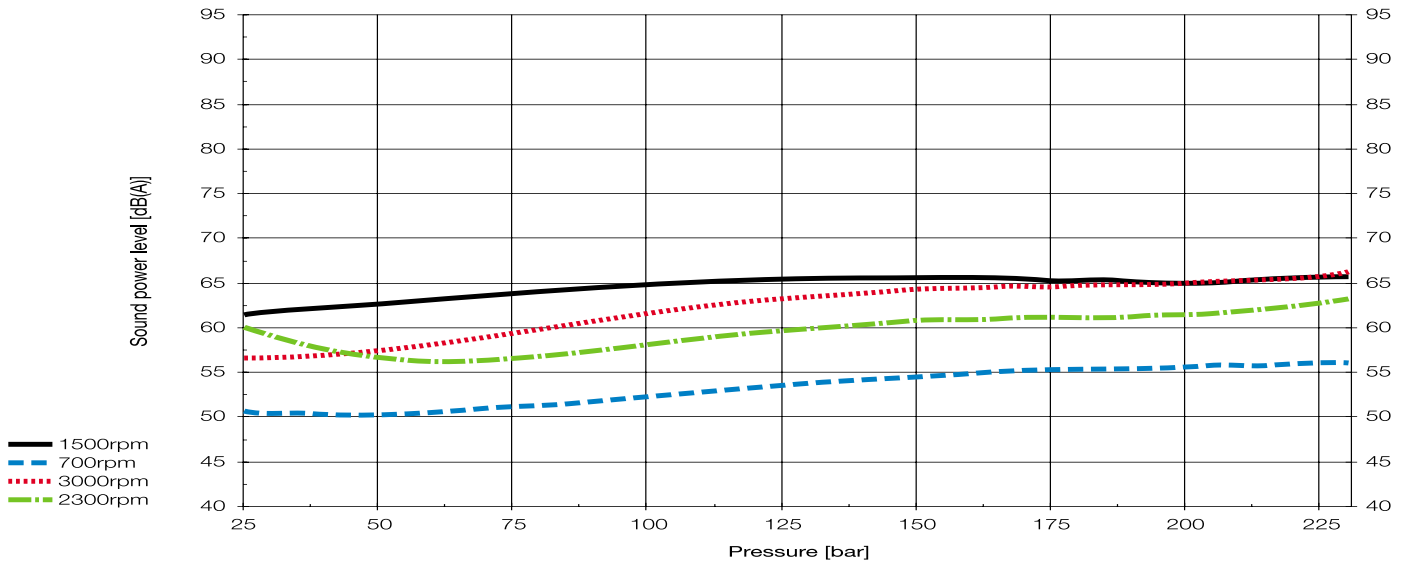
WQ9A1-11



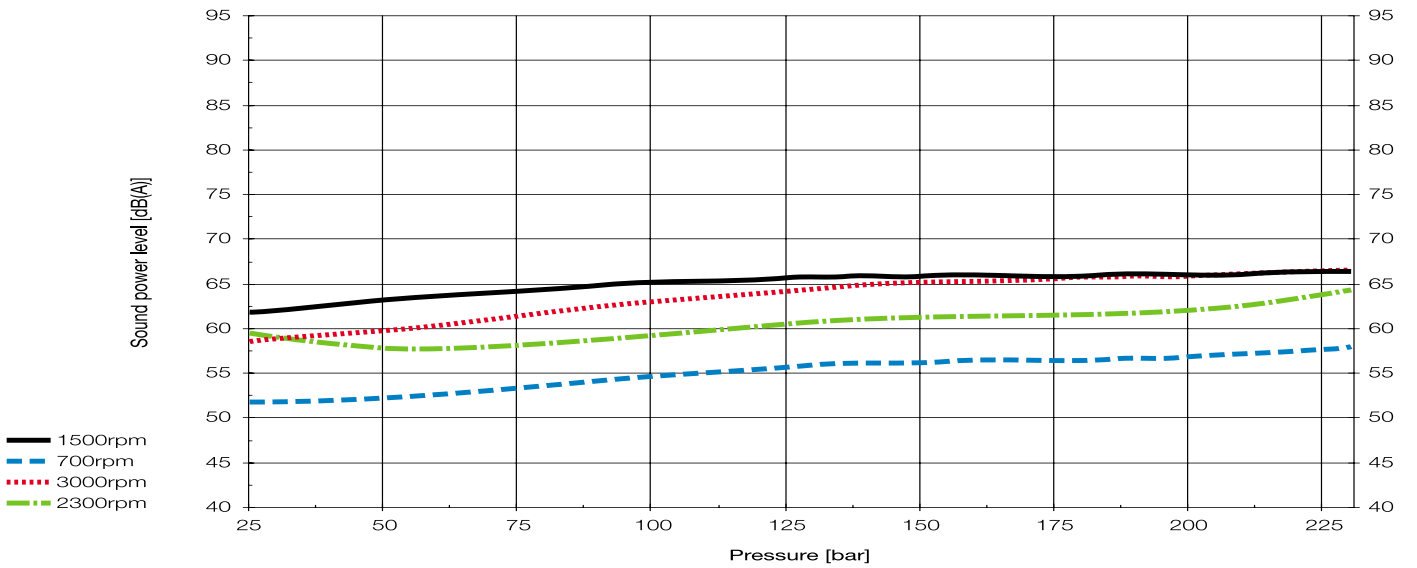
WQ9A1-14



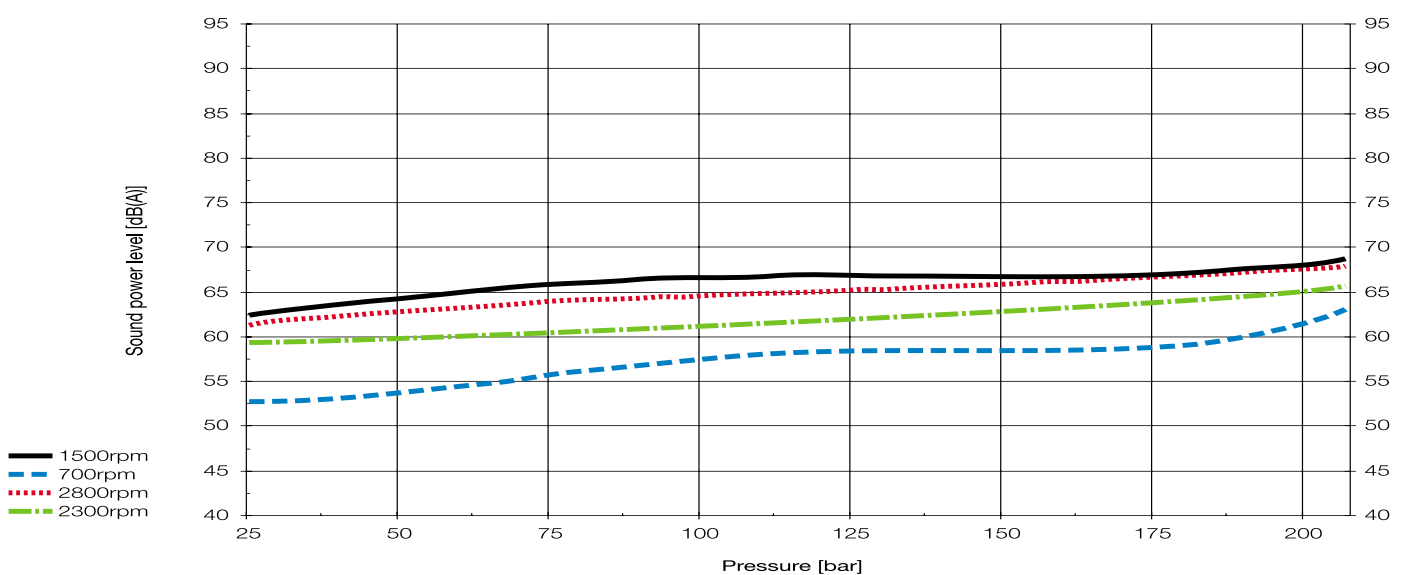
WQ9A1-16



WQ9A1-19



WQ9A1-23



[www.haldex.com](http://www.haldex.com)



**Haldex Hydraulics AB**  
 Industrigatan 6  
 Box 511  
 SE-195 25 ARLANDASTAD  
 Sweden  
 Tel: +46-8 591 288 50  
 Fax: +46-8 591 288 60  
[info.hydraulics.eu@haldex.com](mailto:info.hydraulics.eu@haldex.com)

**Haldex Hydraulics Corp.**  
 2222 15th Street  
 ROCKFORD, IL 61104  
 USA  
 Tel: +1-815 398 4400  
 Fax: +1-815 398 5977  
[info.hydraulics.us@haldex.com](mailto:info.hydraulics.us@haldex.com)

**Haldex Hydraulics AB**  
 Ringvägen 3  
 SE-280 40 SK. FAGERHULT  
 Sweden  
 Tel: +46-433 32400  
 Fax: +46-433 30546  
[info.hydraulics.eu@haldex.com](mailto:info.hydraulics.eu@haldex.com)

**Haldex Hydraulics Corp.**  
 214 James Farm Road  
 Statesville, NC 28625  
 USA  
 Tel: +1-704 873 2587  
 Fax: +1-704 838 7989  
[info.hydraulics.us@haldex.com](mailto:info.hydraulics.us@haldex.com)

**Haldex Hydraulics GmbH**  
 Seligenweg 12  
 Postfach 1507  
 DE-95014 HOF  
 Germany  
 Tel: +49-9281 895-0  
 Fax: +49-9281 87133  
[info.hydraulics.eu@haldex.com](mailto:info.hydraulics.eu@haldex.com)



Haldex is an innovator in vehicle technology and supplies proprietary systems and components for trucks, cars and industrial vehicles worldwide. Haldex is listed on the Stockholm Stock Exchange and has yearly sales exceeding 6,5 billion Swedish Krona with 4.000 employees ([www.haldex.com](http://www.haldex.com)).

## PRODUCT RANGE

**HE Powerpacks**  
 12/24/48 VDC 0.3 – 4.5 kW and  
 0.75 – 3 kW AC modular power  
 packs

**Pressure Switches**  
 5 - 350 bar, connecting/  
 disconnecting

**HE Box Powerpacks**  
 12/24/48 VDC modular  
 powerpacks in weatherproof  
 boxes

**W100 Hydraulic pumps**  
 0,5 - 2,0 cc 227 bar

**W300 Hydraulic pumps**  
 0.8 – 5.7 cc 230 bar

**W600 Hydraulic pumps**  
 3 – 12 cc 276 bar

**WM600 Hydraulic motors**  
 3 – 12 cc 276 bar

**W900 Hydraulic pumps**  
 5 – 31 cc/section 276 bar

**WM900 Hydraulic motors**  
 5 - 31 cc/section 276 bar

**WQ900 The quiet pump**  
 5 - 23 cc/section 230 bar

**W1500 Hydraulic pumps**  
 19 - 50 cc/section 276 bar

**WM1500 Hydraulic motors**  
 19 - 50 cc/section 276 bar

**G25 Hydraulic pumps**  
 21.3 – 63 cc/section 250 bar

**GPA Internal Gear pumps**  
 1.7 – 63 cc/section 100 bar

**GC Hydraulic pumps**  
 1.06 – 11.65 cc/section 275 bar

**II-Stage Hydraulic pumps**  
 4.2 – 22.8 cc/section 275 bar

**Rotary Flow Dividers**  
 3.8 – 13.3 cc/section 300 bar

**G20/G30 (LS) Hydraulic pumps**  
 23 – 161 cc/section 275 bar

**Transmission pumps**

**Fuel pumps**