



General Price List
IES/313.00

Industrial
Electric
Heat line
Industrial
Comfort line

INSTRUCTIONS FOR USING

The index allows to locate the desired product looking through "Group of products" or by the "Type" which distinguishes each one of them. Each product is determined by a "Code" in the first column. The column "Description" contains the Type, Description of product, Volts, Watts and other characteristics. The column "Kg" contains the weight of product. The column € indicates the Price for unit in Euro.

INDUSTRIAL ELECTRIC HEAT LINE

ORDERLY INDEX FOR GROUP PRODUCTS

GROUP OF PRODUCTS	PAGE
TUBULAR AND FINNED ELEMENTS	4
IMMERSION ELEMENTS	5
CHEMICAL BATH HEATERS	6
FLANGED IMMERSION HEATERS	6
MAINTENANCE AND HEATING FOR DEPOSITS	7
CIRCULATION HEATERS	8
BATTERIES AND EQUIPMENTS FOR AIR	9
SPECIFIC PRODUCTS	9
RADIATION EQUIPMENT	9
EXPLOSION-PROOF MATERIAL	10

ORDERLY INDEX FOR TYPE AND DESCRIPTION

TYPE	DESCRIPTION	PAGE
700EX	CONVECTORS EXD	10
BC	EDISON LAMP	9
BPS/BFC/BKB/B	IMMERSION HEATERS FOR CHEMICAL BATH	6
TIBR	PIPES	6
BSI/BSN	AIR CONDITIONNING DUCT HEATERS, SLIP-IN TYPE	9
BTC / BAT	CIRCULAR AND INDUSTRIAL BATTERIES	9
CAC-P/CAC-G	ELEMENTS WITH SPIRAL WOUND FIN IN STEEL Ø24MM AND Ø32MM	4
CAD	WATER BOILERS	8
CAL-P/CAL-PX	STEEL AND STAINLESS STEEL ELEMENTS	4
CAS / CAI	SUCTION EXTRACTION HEATERS	7
CCD / CED	ELEMENTS FOR RADIATORS	5
CCM	PANEL BOARD HEATERS	4
CFM	IMMERSION HEATERS WITH FLANGED FOR FUEL OIL AND OIL	6
CFM-I / CAS-I	IMMERSION HEATERS STEEL REMOVABLE	7
CGH	IMMERSION HEATERS FOR DENSE OIL OR FUEL OIL	5
CIH	IMMERSION HEATERS FOR WATER	5
CL / CM	ELEMENTS WITH CABLE (PORTABLES)	6
CMAT	ELEMENTS WITH THERMOSTAT	5
COM / CAT	IMMERSION HEATERS WITH FLANGED FOR LIGHT OIL AND THERMAL OIL	7
CTI/CCN/CIX	PORTABLES ELEMENTS FOR CHEMICAL BATH	6
CXH	IMMERSION HEATERS FOR LIGHT OIL	5
CXM	IMMERSION HEATERS WITH FLANGED FOR WATER	6
DPBX/DPBTX	DRUM HEATERS	9
EA	ELEMENTS FOR OVENS	4
EH/ETC	STRAIGHT ELEMENTS	4
ER / EHT	TUBULAR ELEMENTS FOR IMMERSION	4
IC-FTE	CERAMIC EMITTERS	9
IRP/LIR	METALLIC EMITTERS	10
JK	KLINGERIT JOINTS	6
LGA	FARM LAMP	9
NS	LEVEL SENSORS	6
PRO / SOL	RADIANT PANELS	10
RBL/RBF	DRUM HEATERS WITH JACKET	9
RFI-P/M/G/L	STANDING PUMP DEEP TANK HEATERS FOR FUEL OIL EXTRACTION	7
RFP/ROP	RECIRCULATION HEATERS	8
RFP-G/ROP-G/ RAT/RXP-G	RECIRCULATION HEATERS WITH FLANGE AND SUPPORTS	8
RIH	QUARTZ AND HALOGEN RADIATORS	9
TAO / CEP	WATERPROOF BOX	6
TF	TEMPERATURE PROBES	6
TMT	ELEMENTS FOR STERILIZERS	5
TRN	PROTECTOR CAP	6

CONFIRMATION OF ORDER

Specify in your order the Code which defines completely the product. Anyway, for safety's sake, state as well type and catalogue number, volts, power and other additional characteristics if there should be. See at the end of the catalogue of each group the indications to determine supplements, additional characteristics, modifications and accessories.

INDUSTRIAL COMFORT LINE

ORDERLY INDEX FOR GROUP PRODUCTS

GROUP OF PRODUCTS	PAGE
PORTABLE AND WALL-MOUNTED ELECTRONIC AIR-BLOW HEATERS	11
AIR-BLOW HEATERS FOR FARMS	11
HOT AIR GENERATORS	11
EXPLOSION-PROOF AIR-BLOW HEATERS	11
CEILING AIR-BLOW HEATERS	11
ADJUSTABLE RADIANT PANEL	11
INFRARED RADIATORS AND EXTERIORS	12
WALL INFRARED SCREENS	12
BLACKLIGHT RADIANT HEATERS	12
HEATER GLASS FRONT	12
CONVECTOR PANELS	13
CONVECTORS	13
CURTAINS SHORT RANGE	13
CURTAINS MEDIUM RANGE	13
CURTAINS HIGH RANGE	14

ORDERLY INDEX FOR TYPE AND DESCRIPTION

TYPE	DESCRIPTION	PAGE
AER-785 / AER-786	HOT AIR GENERATORS	11
AER-EX	EXPLOSION PROOF AIR-BLOW HEATERS	11
AER-G5	AIR-BLOW HEATERS FOR FARMS	11
AER-ME	ELECTRONIC WALL-MOUNTED AIR-BLOW HEATERS	11
AER-P27	PORTABLE AIR-BLOW HEATER HIGH POWER	11
AER-PE	PORTABLE ELECTRONIC AIR-BLOW HEATERS	11
AER-T	CEILING AIR-BLOW HEATERS	11
CEM	CONVECTOR	13
COR	CURTAINS SHORT RANGE	13
CORE	CURTAINS SHORT RANGE RECESSED	13
COR-P	CURTAINS SHORT RANGE	13
FIR	HEATER GLASS FRONT	12
LPL	CURTAINS HIGH RANGE	14
LPS/M/G	CURTAINS MEDIUM RANGE	13
LPSE/ME/GE	CURTAINS MEDIUM RANGE RECESSED	13/14
LPX	CURTAINS VERTICAL	14
PANCO	CONVECTOR PANELS	13
PIBL	BLACKLIGHT LIGHT RADIANT HEATER	12
PIM	WALL INFRARED SCREENS	12
PIM+	WALL INFRARED SCREENS IP65	12
PR	RADIANT PANEL	11
RI-D	INFRARED WALL RADIATORS DOUBLE	11
RI-EXT	INFRARED RADIATORS FOR EXTERIORS	12
RI-EXTL	INFRARED RADIATORS FOR EXTERIORS	12
RI-EXTP	WALL INFRARED RADIATORS EXTERIORS	12
RI-EXTS	UMBRELLA INFRARED RADIATORS EXTERIORS	12
RI-S	INFRARED WALL RADIATORS SINGLE	11

INDUSTRIAL ELECTRIC HEAT

CODE TYPE DESCRIPTION Kg €

TUBULAR ELEMENTS

STRAIGHT ELEMENTS

M3,5 terminals Ø8mm AISI 321 annealed.

19602	ER	230V 500W	L-500	0,13	8,13
19612	ER	230V 750W	L-750	0,19	9,34
19622	ER	230V 1000W	L-1000	0,25	10,57
19632	ER	230V 1500W	L-1500	0,38	14,07
19642	ER	230V 2000W	L-2000	0,50	16,21
19652	ER	230V 2500W	L-2500	0,63	19,97
19662	ER	230V 3000W	L-3000	0,76	24,23

High temperature elements Ø12,5mm INCOLOY 800.

58150	EHT	230V 1666W	L-555	0,60	43,67
58149	EHT	230V 3000W	L-925	1,00	67,90
60353	EHT	230V 1666W	L-555	1,10	74,45
60354	EHT	230V 3000W	L-925	1,90	116,12

ELEMENTS FOR OVENS

M4 terminals, grill AISI 310S Ø8mm.

43183	EA	230V 2500W	L-268	0,80	60,38
67830	EA	230V 2000W	L-245	0,70	62,22
66702	EA	230V 3000W	L-674	1,00	70,94

AISI 321 grill Ø8mm.

60628	EA	230V 1730W	L-240	0,70	33,60
73527	EA	230V 1600W	L-240	0,80	43,77
60492	EA	230V 2000W	L-306	0,80	38,13
60491	EA	230V 3000W	L-306	0,80	45,94
62884	EA	230V 3000W	L-375	0,85	59,07

TUBULAR ELEMENTS FOR IMMERSION

Elements in U-bent AISI 321 Ø8mm.

19702	EH	230V 500W	L-230	0,16	18,45
19712	EH	230V 750W	L-360	0,21	19,46
19722	EH	230V 1000W	L-480	0,28	19,83
19732	EH	230V 1500W	L-730	0,40	22,88
19742	EH	230V 2000W	L-980	0,52	25,00

Round elements, Ø8mm AISI 321 nipples M12.

60363	ETC	230V 500W	Ø 100		33,39
60364	ETC	230V 750W	Ø 125		35,11
60381	ETC	230V 500W	Ø 150		19,45
60382	ETC	230V 1000W	Ø 200		21,30
60383	ETC	230V 1500W	Ø 250		25,64
60384	ETC	230V 2000W	Ø 300		41,81
60385	ETC	230V 2500W	Ø 350		42,64

Accessories

45168	RFE	Nipple M12 and washer seal zinc plated			0,64
45172	RLM	Brass nipple M12 with nut			1,55

FINNED ELEMENTS

STEEL ELEMENTS

Models with M12 nipples and 4W/cm² screw terminals.

03502	CAL-P	230V 400W	L-270	0,35	13,46
03542	CAL-P	230V 700W	L-400	0,50	14,67
03543	CAL-P	400V 700W	L-400	0,50	16,02
03512	CAL-P	230V 1000W	L-520	0,62	16,40
03513	CAL-P	400V 1000W	L-520	0,62	18,70
03522	CAL-P	230V 1500W	L-770	0,95	21,06
03523	CAL-P	400V 1500W	L-770	0,95	21,59
03532	CAL-P	230V 2000W	L-1020	1,25	29,69
03533	CAL-P	400V 2000W	L-1020	1,25	29,92

Models with fast fixing screw and M4 threaded terminals 4W/cm²

10602*	CAL-P	230V 250W * Without pivot	L-200	0,24	11,09
10612	CAL-P	230V 600W	L-300	0,36	11,52
10622	CAL-P	230V 800W	L-400	0,48	13,06
10632	CAL-P	230V 1000W	L-500	0,58	13,65
10642	CAL-P	230V 1250W	L-625	0,77	16,22
10652	CAL-P	230V 1500W	L-750	0,95	18,23
10662	CAL-P	230V 1750W	L-875	1,10	21,80
10672	CAL-P	230V 2000W	L-1000	1,25	27,88
10682	CAL-P	230V 2500W	L-1250	1,55	35,22

CODE TYPE DESCRIPTION Kg €

Models with fast fixing screw and M4 threaded terminals 7W/cm².

10712	CAL-P	230V 1000W	L-300	0,36	11,39
10722	CAL-P	230V 1500W	L-400	0,48	12,63
10732	CAL-P	230V 1750W	L-500	0,58	14,34
10742	CAL-P	230V 2000W	L-625	0,77	16,87
10752	CAL-P	230V 2500W	L-750	0,95	18,87
10762	CAL-P	230V 3000W	L-875	1,10	21,47
10772	CAL-P	230V 3500W	L-1000	1,25	28,30
10782	CAL-P	230V 4250W	L-1250	1,55	35,91

STAINLESS STEEL ELEMENTS

Nipple M12, U shaped 4w/cm².

14612	CAL-PX	230V 500W	L-320	0,32	27,24
14622	CAL-PX	230V 750W	L-420	,041	30,00
14633	CAL-PX	400V 750W	L-420	0,41	28,86
14642	CAL-PX	230V 1000W	L-520	0,48	33,20
14653	CAL-PX	400V 1000W	L-520	0,48	33,29
14662	CAL-PX	230V 1500W	L-770	0,74	41,40
14673	CAL-PX	400V 1500W	L-770	0,74	41,20
14682	CAL-PX	230V 2000W	L-1020	0,97	49,85
14693	CAL-PX	400V 2000W	L-1020	0,97	49,77

PANEL BOARD HEATERS

Model of CAL-P element with CNO waterproof box, 4W/cm².

10532*	CCM	230V 250W *Without box	L-195	0,27	12,72
10542	CCM	230V 400W	L-251	0,61	31,30
10552	CCM	230V 700W	L-377	0,76	32,52
10562	CCM	230V 1000W	L-503	0,88	34,24
10572	CCM	230V 1500W	L-748	1,21	38,91
10582	CCM	230V 2000W	L-1000	1,51	47,53

Note: They are provided separately and the assembly is made by the user.

Accessories

12870	SB	Pair of stands			1,63
12880	SA	Pair of stands			1,71
12842	CNO	Poliester waterproof box IP65			16,13

ELEMENTS WITH SPIRAL WOUND FIN IN STEEL Ø24MM

Two nipples M12 tube Ø8mm, aluminium finishing.

03802	CAC-P	230V 250W	L-250	0,20	24,30
03812	CAC-P	230V 500W	L-500	0,48	23,23
03822	CAC-P	230V 1000W	L-1000	0,48	24,35
14202	CAC-P	230V 500W	L-370	0,74	20,60
14212	CAC-P	230V 1000W	L-620	0,74	23,81
14222	CAC-P	230V 2000W	L-1170	0,97	28,42
14232	CAC-P	230V 3000W	L-1770	0,97	35,08

Nipple M12 tube Ø8mm, aluminium finishing.

44329	CAC-P	230V 1000W	L-740	1,50	17,15
44392	CAC-P	230V 1333W	L-1240	0,80	22,53
44391	CAC-P	230V 1666W	L-740	0,50	17,23
44394	CAC-P	230V 2000W	L-1740	1,15	27,64
44396	CAC-P	230V 2000W	L-2240	1,40	32,52
44393	CAC-P	230V 2500W	L-1240	0,80	22,46
44605	CAC-P	230V 3000W	L-1660	1,10	25,55
44395	CAC-P	230V 3333W	L-1740	1,15	27,92
44397	CAC-P	230V 4000W	L-2240	1,45	33,57

ELEMENTS WITH SPIRAL WOUND FIN IN STEEL Ø32MM

Fin brazed with cooper, M18 nipples, U-bent shaped 4W/cm².

14352	CAC-GH	230V 1000W	L-320	0,32	41,51
14353	CAC-GH	400V 1000W	L-320	0,32	39,46
14362	CAC-GH	230V 2000W	L-620	0,41	46,69
14363	CAC-GH	400V 2000W	L-620	0,48	45,64
14372	CAC-GH	230V 3000W	L-920	0,48	53,88
14373	CAC-GH	400V 3000W	L-920	0,74	52,87
14382	CAC-GH	230V 4200W	L-1220	0,74	62,42
14383	CAC-GH	400V 4200W	L-1220	0,97	59,05

U-bent shaped, two nipples M18, the 5 to 9W/cm².

44871	CAC-GH	400V 1500W	L-400	1,04	40,77
44864	CAC-GH	400V 2660W	L-700	1,70	48,50
44865	CAC-GH	400V 4000W	L-1000	2,65	56,36
44866	CAC-GH	400V 5000W	L-1300	3,50	66,44
44867	CAC-GH	400V 6000W	L-1600	4,40	73,55
44868	CAC-GH	400V 7000W	L-1800	4,60	80,02
44869	CAC-GH	400V 8000W	L-2100	5,70	90,49
44870	CAC-GH	400V 10000W	L-2600	6,90	106,69

CODE	TYPE	DESCRIPTION		Kg	€
44842	CAC-GH	400V 7500W	L-1300	3,50	65,87
44835	CAC-GH	400V 9000W	L-1600	4,40	77,22
44836	CAC-GH	400V 10000W	L-1800	4,60	82,85
44837	CAC-GH	400V 12000W	L-2100	5,70	93,15
44838	CAC-GH	400V 15000W	L-2600	6,90	107,39
44831	CAC-GH	400V 2330W	L-400	1,30	41,08
44832	CAC-GH	400V 4000W	L-700	2,08	49,11
44833	CAC-GH	400V 6000W	L-1000	2,65	57,88

Straight element, two nipples M18, 7W/cm².

14452	CAC-G	230V 2000W	L-800	1,04	41,32
14462	CAC-G	230V 3000W	L-1160	1,45	42,51
14473	CAC-G	230V 5000W	L-1860	2,12	53,35
14483	CAC-G	230V 7000W	L-2560	3,00	62,96

Special shape fin elements.

60279	CAH	Simple U-bent shape			7,48
60280	CAM	Double U-bent shape			16,56

IMMERSION HEATERS

WATWR HEATERS IN COOPER

Singlephase with protected box and thread 1 1/4" G.

10902	CIH	230V 1000W	L-260	0,30	43,92
10912	CIH	230V 2000W	L-260	0,43	50,09
10922	CIH	230V 3500W	L-460	0,61	61,90

Three-phase with thread 1 1/2" G.

12012	CIH	3~230/400V 1500W	L-160	0,45	61,60
12022	CIH	3~230/400V 2000W	L-185	0,49	61,83
12032	CIH	3~230/400V 3000W	L-260	0,59	63,61
12042	CIH	3~230/400V 4500W	L-380	0,77	71,29
12052	CIH	3~230/400V 6000W	L-490	0,93	73,40
12062	CIH	3~230/400V 7500W	L-600	1,08	80,70

Three-phase with pocket, thread 2" G.

12212	CIH	3~230/400V 3000W	L-260	0,68	74,92
12222	CIH	3~230/400V 4500W	L-380	0,85	79,88
12232	CIH	3~230/400V 6000W	L-490	1,01	88,19
12242	CIH	3~230/400V 7500W	L-600	1,17	92,02
12252	CIH	3~230/400V 10500W	L-850	1,53	104,11
12262	CIH	3~230/400V 13500W	L-1100	1,89	146,77

Three-phase with thread, 2 1/2" G.

12362	CIH	3~230/400V 6000W	L-310	1,84	108,25
12372	CIH	3~230/400V 8000W	L-390	2,09	117,37
12382	CIH	3~230/400V 12000W	L-550	2,58	135,94
12392	CIH	3~230/400V 18000W	L-820	3,58	157,59

Three-phase with thread, M45.

11002	CIH	3~230/400V 1500W	L-160	0,45	62,76
11012	CIH	3~230/400V 2000W	L-185	0,49	63,00
11022	CIH	3~230/400V 3000W	L-260	0,59	64,81
11032	CIH	3~230/400V 4500W	L-380	0,77	73,36
11042	CIH	3~230/400V 6000W	L-490	0,93	74,78
11052	CIH	3~230/400V 7500W	L-600	1,08	82,21

Three-phase with thread, M77.

11152	CIH	3~230/400V 6000W	L-310	1,84	108,25
11162	CIH	3~230/400V 8000W	L-390	2,09	117,37
11172	CIH	3~230/400V 12000W	L-550	2,58	135,94
11182	CIH	3~230/400V 18000W	L-820	3,58	157,59

ELEMENTS FOR LIGHT OILS IN STAINLESS STEEL AISI 321

Theared 1 1/4" G.

10932	CXH	230V 1000W	L-240	0,38	42,15
10942	CXH	230V 2000W	L-440	0,58	46,82
10952	CXH	230V 3000W	L-650	0,79	54,94

Theared 1 1/2" G.

12112	CXH	3~230/400V 2000W	L-300	0,65	58,11
12122	CXH	3~230/400V 3000W	L-440	0,85	61,64
12132	CXH	3~230/400V 4000W	L-600	1,08	67,59
12142	CXH	3~230/400V 6000W	L-850	1,45	73,70

Theared 2" G.

12312	CXH	3~230/400V 2000W	L-300	0,74	64,19
12322	CXH	3~230/400V 4000W	L-600	1,17	75,49

CODE	TYPE	DESCRIPTION		Kg	€
Theared 2 1/2" G.					
12412	CXH	3~230/400V 5000W	L-520	2,53	123,50
12422	CXH	3~230/400V 9000W	L-870	3,75	160,87
Theared M45.					
11062	CXH	3~230/400V 2000W	L-300	0,65	59,83
11072	CXH	3~230/400V 3000W	L-440	0,85	62,84
10992	CXH	3~230/400V 4000W	L-600	1,08	70,27
11082	CXH	3~230/400V 6000W	L-850	1,45	76,62

Theared M77.

11192	CXH	3~230/400V 5000W	L-520	2,52	125,90
11202	CXH	3~230/400V 9000W	L-870	3,75	192,15

ELEMENTS FOR DENSE OIL OR FUEL-OIL

Theared 1 1/4" G., of steel.

10962	CGH	230V 650W	L-320	0,44	41,78
10972	CGH	230V 1000W	L-480	0,59	45,86

Theared 1 1/2" G., of steel.

12162	CGH	3~230/400V 1000W	L-320	0,68	48,07
12172	CGH	3~230/400V 1500W	L-470	0,89	51,59
12182	CGH	3~230/400V 2000W	L-600	1,08	54,30
12192	CGH	3~230/400V 3000W	L-920	1,54	59,26

Theared 2" G., of steel.

12332	CGH	3~230/400V 1500W	L-470	0,98	66,50
12342	CGH	3~230/400V 3000W	L-920	1,63	74,49

Theared 2 1/2" G., of steel.

12462	CGH	3~230/400V 2000W	L-350	1,95	89,76
12472	CGH	3~230/400V 3000W	L-510	2,50	89,88
12482	CGH	3~230/400V 4000W	L-670	3,06	94,42
12492	CGH	3~230/400V 6000W	L-980	4,14	115,74
12502	CGH	3~230/400V 8000W	L-1280	5,18	129,78

Theared M45.

11092	CGH	3~230/400V 1000W	L-320	0,68	53,24
11102	CGH	3~230/400V 1500W	L-470	0,89	51,59
11112	CGH	3~230/400V 2000W	L-600	1,08	54,30
11122	CGH	3~230/400V 3000W	L-920	1,54	59,86

Theared M77.

11212	CGH	3~230/400V 2000W	L-350	1,95	89,76
11222	CGH	3~230/400V 3000W	L-510	2,50	89,88
11232	CGH	3~230/400V 4000W	L-670	3,06	94,42
11242	CGH	3~230/400V 6000W	L-980	4,14	129,67
11252	CGH	3~230/400V 8000W	L-1280	5,18	158,22

ELEMENTS WITH THERMOSTAT

Singlephase and thread 1 1/4" G. in nickel cooper plated.

10012	CMAT	230V 750W	L-200	0,40	54,00
10022	CMAT	230V 1000W	L-285	0,43	55,79
10042	CMAT	230V 1500W	L-310	0,48	56,20
10052	CMAT	230V 2000W	L-310	0,53	57,14
10072	CMAT	230V 3000W	L-370	0,62	58,33

ELEMENTS FOR STERILIZERS

Singlephase, with waterproof box IP65 and thread 1 1/4" G.

11132	TMT	230V 1000W	L-190	1,02	125,42
11142	TMT	230V 1000W	L-190	1,02	150,15

Note: TMT model 11142, with switch and pilot light.

ELEMENTS FOR RADIATORS

With thread 3/4" G., cooper and protected box.

02002	CCD	230V 1000W	L-250	0,28	40,48
02012	CCD	230V 1200W	L-300	0,32	42,28
02022	CCD	230V 1500W	L-350	0,37	42,72
02032	CCD	230V 2000W	L-450	0,47	43,86

With thread 1 1/4" G., stainless steel AISI 321 and protected box.

07712	CED	230V 750W	L-230	0,30	42,06
07722	CED	230V 1000W	L-300	0,34	42,58
07732	CED	230V 1500W	L-430	0,40	43,59
07742	CED	230V 2000W	L-570	0,47	43,97
07762	CED	230V 3000W	L-830	0,61	44,07

CODE	TYPE	DESCRIPTION		Kg	€
Accessories - Pipe coupling metric and G thread.					
11760	BR	M45	Fe	0,22	6,89
11770	BR	M45	AISI 304	0,22	29,89
11780	BR	M77	Fe	0,53	17,53
11790	BR	M77	AISI 304	0,53	60,52
11960	BR	1 1/4" G	Fe	0,22	6,75
11970	BR	1 1/4" G	AISI 304	0,22	22,36
12530	BR	1 1/2" G	Fe	0,22	6,94
12540	BR	1 1/2" G	AISI 304	0,22	28,31
12560	BR	2" G	Fe	0,28	16,14
12570	BR	2" G	AISI 304	0,38	41,39
12590	BR	2 1/2" G	Fe	0,53	17,30
12600	BR	2 1/2" G	AISI 304	0,53	57,31

Klingerit Joint.

46172	JK	M12	20x13,5x2		0,74
46176	JK	M12	18x13x1,5		0,12
46177	JK	M14	20x15x1,5		0,12
46178	JK	M18	25x19x1,5		0,23
46187	JK	M16	22x17x1,5		1,21
11810	JK	M45	2mm		0,78
11820	JK	M77	2mm		0,88
46189	JK	3/4"	36x27x2		0,18
11910	JK	1 1/4"	2mm		0,55
12620	JK	1 1/2"	2mm		0,78
12660	JK	2"	2mm		0,83
12700	JK	2 1/2"	2mm		0,88

Terminal protection cap, IP41P41.

12830	TRN	1 1/2"	Aluminium		10,54
-------	-----	--------	-----------	--	-------

Waterproof terminal boxes, IP54.

12740	TAO	1 1/2"	Aluminium	0,33	24,74
12760	TAO	2"	Aluminium	0,45	27,67
12780	TAO	2 1/2"	Aluminium	0,75	34,60

Waterproof terminal adjustable, IP65.

56274	CEP	M45 and 1 1/2"	Polyester	0,25	27,81
56275	CEP	M77, 2 1/2" and 2"	Polyester	0,25	29,24

CHEMICAL BATH HEATERS

IMMERSION ELEMENTS

Replaceable cylindrical elements.

60099	BPS	1,6 kW	L-800	Porcelain	193,03
60100	BPS	2,5 kW	L-800	Porcelain	196,97
60102	BPS	2,5 kW	L-1000	Porcelain	229,80
60103	BPS	3,5 kW	L-1000	Porcelain	248,18
60105	BFC	1,6 kW	L-800	Teflón	Consult
60107	BFC	2,0 kW	L-1000	Teflón	Consult
60113	BTI	1,6 kW	L-800	Titanium	292,83
60114	BTI	2,5 kW	L-800	Titanium	300,70
60116	BTI	12,5 kW	L-1000	Titanium	338,78
60117	BTI	3,5 kW	L-1000	Titanium	355,85
-	BKB	0,4 kW	L-315	AISI 316Ti.	131,31
-	BKB	0,63 kW	L-315	AISI 316Ti.	131,31
-	BKB	0,63 kW	L-400	AISI 316Ti.	135,25
-	BKB	1,0 kW	L-400	AISI 316Ti.	135,25
-	BKB	1,0 kW	L-500	AISI 316Ti.	140,50
77861	BKB	1,4 kW	L-500	AISI 316Ti.	140,50
-	BKB	1,25 kW	L-630	AISI 316Ti.	153,63
-	BKB	1,6 kW	L-630	AISI 316Ti.	153,63
65902	BKB	2,0 kW	L-630	AISI 316Ti.	153,63
60108	BKB	1,6 kW	L-800	AISI 316Ti.	168,08
62057	BKB	2,0 kW	L-800	AISI 316Ti.	168,08
60109	BKB	2,5 kW	L-800	AISI 316Ti.	172,02
77507	BKB	2,0 kW	L-1000	AISI 316Ti.	185,15
60111	BKB	2,5 kW	L-1000	AISI 316Ti.	191,72
-	BKB	2,15 kW	L-1000	AISI 316Ti.	191,72
60112	BKB	3,5 kW	L-1000	AISI 316Ti.	206,16
-	BKB	2,8 kW	L-1250	AISI 316Ti.	223,23
-	BKB	3,5 kW	L-1250	AISI 316Ti.	223,23
-	BKB	4,0 kW	L-1250	AISI 316Ti.	237,67
-	BKB	3,5 kW	L-1600	AISI 316Ti.	261,31

Level sensing rods.

60395	NS 2/30	1 Sensor	AISI	L-300 45x45x58	88,24
60396	NS 3/30	2 Sensors	AISI	L-300 45x45x58	105,57
60397	NS 4/30	3 Sensors	AISI	L-300 45x45x58	119,76

CODE	TYPE	DESCRIPTION		Kg	€
PT100 temperature probe.					
60410	TF	2/30 Inox	L-300 45x45x58		126,06

Accessories.

60422	HB	Support PP for fixing tank BC box			10,50
60423	EM	For fixing holes Ø87 to 90mm			16,81
60424	HM	For fixing Ø70 to 876mm			16,81
76237	HL	Support in PP for setting box LC			18,91
65717	SB	Universal key for BC			6,30
65695	SL	Universal key for LC			8,40

Portables elements.

11602	CTI	230V 1000W	Titanium	0,75	138,14
11612	CTI	230V 1500W	Titanium	0,84	150,08
11622	CTI	230V 2000W	Titanium	0,93	178,07
07302	CTI	230V 3000W	Titanium	1,10	197,00
07322	CCN	230V 3000W	Couivre	1,35	125,49
11662	CIX	230V 1000W	AISI 316	1,00	115,76
11672	CIX	230V 1500W	AISI 316	1,17	119,14
11682	CIX	230V 2000W	AISI 316	1,34	124,05
07332	CIX	230V 3000W	AISI 316	1,70	127,33

Note: CTI models ex stock.

ELEMENTS WITH CABLE (PORTABLES)

Heaters with IP65 vulcanized handle.

01832	CL	230V 1500W	L-460	0,75	88,23
04002	CM	230V 750W	L-220	1,00	86,91

FLANGED IMMERSION HEATERS

WATER HEATERS

Maximum temperature 90°C IP54 in AISI 316L

13312	CXM	3~400V 13000W	L-585	12	822,64
13322	CXM	3~400V 18000W	L-760	13	882,17
13332	CXM	3~400V 24000W	L-960	14	911,15
13342	CXM	3~400V 30000W	L-1212	16	998,73
13352	CXM	3~400V 40000W	L-1535	18	1.087,34
13412	CXM	3~400V 20000W	L-585	18	1.153,49
13422	CXM	3~400V 27000W	L-760	20	1.262,54
13432	CXM	3~400V 36000W	L-960	22	1.277,36
13442	CXM	3~400V 45000W	L-1212	24	1.341,23
13452	CXM	3~400V 60000W	L-1535	27	1.457,43

13512	CXM	3~400V 33000W	L-585	26	1.736,90
13522	CXM	3~400V 45000W	L-760	29	1.862,08
13532	CXM	3~400V 60000W	L-960	32	1.949,18
13542	CXM	3~400V 75000W	L-1212	37	2.139,25
13552	CXM	3~400V 100000W	L-1535	42	2.345,13

13612	CXM	3~400V 52000W	L-585	39	2.514,87
13622	CXM	3~400V 72000W	L-760	44	2.740,30
13632	CXM	3~400V 96000W	L-960	49	2.881,37
13642	CXM	3~400V 120000W	L-1212	56	3.175,14
13652	CXM	3~400V 160000W	L-1535	64	3.501,46

HEATERS FOR FUEL OIL AND OIL

Maximum temperature 120°C IP54 in Steel.

2702	CFM	3~400V 4500W	L-585	12	693,80
2712	CFM	3~400V 6000W	L-760	13	710,32
2722	CFM	3~400V 8000W	L-960	14	735,51
2732	CFM	3~400V 10000W	L-1210	16	769,28
2742	CFM	3~400V 13000W	L-1535	18	862,10
2752	CFM	3~400V 17000W	L-1960	21	925,83
2762	CFM	3~400V 22000W	L-2460	24	979,28
2772	CFM	3~400V 6500W	L-585	18	932,88
2782	CFM	3~400V 9000W	L-760	20	958,87
2792	CFM	3~400V 12000W	L-960	22	994,26
2802	CFM	3~400V 15000W	L-1210	24	1.037,51
2812	CFM	3~400V 20000W	L-1535	27	1.201,18
2822	CFM	3~400V 26000W	L-1960	32	1.292,30
2832	CFM	3~400V 33000W	L-2460	37	1.367,85

2842	CFM	3~400V 10000W	L-585	26	1.332,46
2852	CFM	3~400V 15000W	L-760	29	1.394,17
2862	CFM	3~400V 20000W	L-960	32	1.484,03
2872	CFM	3~400V 25000W	L-1210	37	1.632,11
2882	CFM	3~400V 32000W	L-1535	42	1.736,64
2892	CFM	3~400V 42000W	L-1960	49	1.895,57
2902	CFM	3~400V 55000W	L-2460	58	2.009,67

CODE	TYPE	DESCRIPTION	Kg	€
2912	CFM	3~400V 17000W L-585	39	2.118,19
2922	CFM	3~400V 24000W L-760	44	2.188,98
2932	CFM	3~400V 32000W L-960	49	2.284,95
2942	CFM	3~400V 40000W L-1210	56	2.370,71
2952	CFM	3~400V 52000W L-1535	64	2.545,78
2962	CFM	3~400V 68000W L-1960	76	2.787,62
2972	CFM	3~400V 88000W L-2460	89	2.951,14

HEATERS FOR LIGHT OIL AND THERMAL OIL

Maximum temperature 120°C IP54 in Sheathed Steel

9302	COM	3~400V 7000W L-585	12	693,80
9312	COM	3~400V 9000W L-760	13	715,76
9322	COM	3~400V 12000W L-960	14	741,02
9332	COM	3~400V 16000W L-1212	16	778,68
9342	COM	3~400V 21000W L-1535	18	879,42
9352	COM	3~400V 27000W L-1960	21	925,02
9362	COM	3~400V 33000W L-2460	24	981,71
9372	COM	3~400V 10000W L-585	18	932,88
9382	COM	3~400V 14000W L-760	20	965,92
9392	COM	3~400V 18000W L-960	22	1.002,93
9402	COM	3~400V 24000W L-1212	24	1.055,57
9412	COM	3~400V 31000W L-1535	27	1.202,65
9422	COM	3~400V 41000W L-1960	32	1.290,83
9432	COM	3~400V 51000W L-2460	37	1.371,82
9442	COM	3~400V 16000W L-585	26	1.333,27
9452	COM	3~400V 24000W L-760	29	1.387,53
9462	COM	3~400V 30000W L-960	32	1.450,46
9472	COM	3~400V 40000W L-1212	37	1.661,26
9482	COM	3~400V 52000W L-1535	42	1.757,23
9492	COM	3~400V 68000W L-1960	49	1.890,94
9502	COM	3~400V 85000W L-2460	58	2.015,91
9512	COM	3~400V 26000W L-585	39	2.119,81
9522	COM	3~400V 38000W L-760	44	2.206,31
9532	COM	3~400V 48000W L-960	49	2.307,78
9542	COM	3~400V 64000W L-1212	56	2.418,65
9552	COM	3~400V 84000W L-1535	64	2.571,23
9562	COM	3~400V 108000W L-1960	76	2.774,99
9572	COM	3~400V 136000W L-2460	89	2.962,16

Maximum temperature 300°C IP54 in Sheathed Steel

21302	CAT	3~400V 7000W L-585	15	858,20
21312	CAT	3~400V 9000W L-760	16	880,97
21322	CAT	3~400V 12000W L-960	17	905,42
20112	CAT	3~400V 16000W L-1212	19	943,08
20122	CAT	3~400V 21000W L-1535	21	1.027,30
20132	CAT	3~400V 27000W L-1960	24	1.089,42
20142	CAT	3~400V 33000W L-2460	27	1.146,84
21332	CAT	3~400V 10000W L-585	22	1.135,83
21342	CAT	3~400V 14000W L-760	24	1.168,06
21352	CAT	3~400V 18000W L-960	26	1.205,07
20152	CAT	3~400V 24000W L-1212	28	1.256,98
20162	CAT	3~400V 31000W L-1535	31	1.406,40
20172	CAT	3~400V 41000W L-1960	36	1.492,90
20182	CAT	3~400V 51000W L-2460	41	1.573,08
21362	CAT	3~400V 16000W L-585	31	1.625,87
21372	CAT	3~400V 24000W L-760	34	1.680,13
21382	CAT	3~400V 30000W L-960	36	1.742,99
20192	CAT	3~400V 40000W L-1212	42	1.954,60
20202	CAT	3~400V 52000W L-1535	47	2.049,76
20212	CAT	3~400V 68000W L-1960	54	2.184,35
20222	CAT	3~400V 85000W L-2460	63	2.307,78
21392	CAT	3~400V 26000W L-585	49	2.577,62
21402	CAT	3~400V 38000W L-760	54	2.664,12
21412	CAT	3~400V 48000W L-960	59	2.763,17
20232	CAT	3~400V 64000W L-1212	66	2.874,12
20242	CAT	3~400V 84000W L-1535	74	3.028,24
20252	CAT	3~400V 108000W L-1960	86	3.230,45
20262	CAT	3~400V 136000W L-2460	99	3.418,35

MAINTENANCE AND HEATING FOR DEPOSITS

IMMERSION HEATERS, STEEL REMOVABLE

Surface load 2W/cm² suitable for fuel-oil and heavy oils.

32002	CFM-I	3~400V 4000W L-585	14	1.198,21
32012	CFM-I	3~400V 6000W L-760	16	1.266,94
32022	CFM-I	3~400V 7000W L-960	18	1.280,76
32032	CFM-I	3~400V 9000W L-1210	21	1.309,50
32042	CFM-I	3~400V 12000W L-1535	24	1.371,05
32052	CFM-I	3~400V 16000W L-1960	29	1.472,59
32062	CFM-I	3~400V 20000W L-2460	35	1.568,50

CODE	TYPE	DESCRIPTION	Kg	€
32102	CFM-I	3~400V 7000W L-585	20	1.840,39
32112	CFM-I	3~400V 9000W L-760	23	1.756,04
32122	CFM-I	3~400V 12000W L-960	27	1.810,20
32132	CFM-I	3~400V 15000W L-1210	32	2.079,65
32142	CFM-I	3~400V 20000W L-1535	38	1.983,77
32152	CFM-I	3~400V 27000W L-1960	46	2.137,15
32162	CFM-I	3~400V 33000W L-2460	55	2.293,50
32202	CFM-I	3~400V 9000W L-585	27	2.159,05
32212	CFM-I	3~400V 13000W L-760	32	2.249,79
32222	CFM-I	3~400V 17000W L-960	37	2.321,80
32232	CFM-I	3~400V 21000W L-1210	44	2.414,44
32242	CFM-I	3~400V 28000W L-1535	53	2.556,83
32252	CFM-I	3~400V 37000W L-1960	64	2.765,36
32262	CFM-I	3~400V 46000W L-2460	77	2.977,77
32302	CFM-I	3~400V 16000W L-585	44	3.345,00
32312	CFM-I	3~400V 22000W L-760	52	3.499,55
32322	CFM-I	3~400V 29000W L-960	61	3.627,43
32332	CFM-I	3~400V 36000W L-1210	73	3.787,84
32342	CFM-I	3~400V 48000W L-1535	87	4.032,87
32352	CFM-I	3~400V 64000W L-1960	107	4.393,97
32362	CFM-I	3~400V 78000W L-2460	129	4.669,55

Intended to liquefy the fuel oil or viscous liquids.

16212	CAS-I	3~400V 12000W L-1600	54	1.810,44
16213	CAS-I	3~400V 16000W L-2000	65	1.932,44
16214	CAS-I	3~400V 20000W L-2500	78	2.078,53
16215	CAS-I	3~400V 20000W L-1600	78	2.437,08
16216	CAS-I	3~400V 27000W L-2000	93	2.645,43
16217	CAS-I	3~400V 33000W L-2500	111	2.855,37
16218	CAS-I	3~400V 28000W L-1600	121	3.175,83
16219	CAS-I	3~400V 37000W L-2000	145	3.458,06
16220	CAS-I	3~400V 46000W L-2500	173	3.743,56
16221	CAS-I	3~400V 48000W L-1600	190	4.605,15
16222	CAS-I	3~400V 64000W L-2000	223	5.065,02
16223	CAS-I	3~400V 78000W L-2500	260	5.529,83

SUCTION EXTRACTION HEATERS

Intended to liquefy the fuel oil or viscous liquids, outlet.

16200	CAS	3~400V 13000W L-1600	48	1.715,88
16201	CAS	3~400V 17000W L-2000	57	1.840,08
16202	CAS	3~400V 22000W L-2500	67	1.976,52
16203	CAS	3~400V 20000W L-1600	67	2.239,60
16204	CAS	3~400V 26000W L-2000	79	2.447,57
16205	CAS	3~400V 33000W L-2500	93	2.625,21
16206	CAS	3~400V 32000W L-1600	110	3.074,05
16207	CAS	3~400V 42000W L-2000	130	3.365,94
16208	CAS	3~400V 55000W L-2500	154	3.612,52
16209	CAS	3~400V 52000W L-1600	167	4.257,17
16210	CAS	3~400V 68000W L-2000	192	4.704,35
16211	CAS	3~400V 88000W L-2500	220	5.075,97

Use in tanks and other corrosive caustic soda, mild steel St.37.2

16402	CAI	3~400V 1000W L-400	11	698,42
16412	CAI	3~400V 2000W L-700	14	757,96
16422	CAI	3~400V 3000W L-1000	17	792,73
16432	CAI	3~400V 4000W L-1300	20	848,08
16442	CAI	3~400V 5000W L-1700	24	920,37
16452	CAI	3~400V 6000W L-2000	27	976,40
16462	CAI	3~400V 7000W L-2300	30	1.033,10
16472	CAI	3~400V 8000W L-2700	34	1.109,71
16482	CAI	3~400V 9000W L-3000	38	1.165,74

Use in tanks of caustic soda and other corrosive AISI 304.

16502	CAI	3~400V 1000W L-400	11	1.147,17
16512	CAI	3~400V 2000W L-700	14	1.304,72
16522	CAI	3~400V 3000W L-1000	17	1.463,62
16532	CAI	3~400V 4000W L-1300	20	1.628,32
16542	CAI	3~400V 5000W L-1700	24	1.843,17
16552	CAI	3~400V 6000W L-2000	27	2.004,97
16562	CAI	3~400V 7000W L-2300	30	2.172,51
16572	CAI	3~400V 8000W L-2700	34	2.394,52
16582	CAI	3~400V 9000W L-3000	38	2.544,91

STANDING PUMP DEEP TANK HEATERS FOR FUEL-OIL EXTRACTION

For use in underground tanks.

03322	RFI-P	3~230/400V 3000W	20	1.296,23
03342	RFI-P	3~230/400V 6000W	21	1.327,08
03362	RFI-P	3~230/400V 9000W	23	1.531,94
03382	RFI-P	3~230/400V 12000W	25	1.548,77

CODE	TYPE	DESCRIPTION		Kg	€
3423	RFI-M	3~400V 15000W		54	2.626,09
3443	RFI-M	3~400V 20000W		58	2.694,95
3463	RFI-M	3~400V 25000W		64	3.084,14
3483	RFI-M	3~400V 30000W		70	3.103,34
3713	RFI-G	3~400V 37500W		91	3.566,48
3733	RFI-G	3~400V 45000W		98	3.670,14
3743	RFI-G	3~400V 52500W		107	3.841,31
3753	RFI-G	3~400V 60000W		114	3.921,78
03132	RFI-L	230V 1500W		1,3	117,56
03162	RFI-L	230V 3000W		2,5	148,80
03182	RFI-L	3~230/400V 4500W		2,9	180,49
03202	RFI-L	3~230/400V 6000W		4,1	206,36
03212	RFI-L	230V 1500W		1,4	131,46
03222	RFI-L	230V 2000W		1,6	143,78

Note: Valid prices for H3100mm and down.

Superior measures to add by each meter or fraction:

RFI-P First meter or fraction	244,04
FOLLOWING meter or fraction	45,30
RFI-M, RFI-G and RFI-L	Consult

WATER BOILERS

Heaters assembly and box with thermostat, contractor limiter.

09002	CAD900	3~230/400V 3000W		10,6	694,55
09012	CAD900	3~230/400V 4500W		10,8	700,87
09022	CAD900	3~230/400V 6000W		11,0	702,60
09032	CAD900	3~230/400V 7500W		11,2	711,00

CIRCULATION HEATERS

RECIRCULATION HEATERS

Load 2 to 2,5W/cm² for oil fuel oils.

02132	RFP	3~230/400V 1500W	Ø70mm	5,5	863,77
02162	RFP	3~230/400V 3000W	Ø70mm	10	898,11
02342	RFP	3~230/400V 4000W	Ø102mm	15	971,66
02362	RFP	3~230/400V 6000W	Ø102mm	18	1.059,03
02382	RFP	3~230/400V 8000W	Ø102mm	23	1.071,91

Load 4W/cm² for light oils.

04132	ROP	3~230/400V 3000W	Ø70mm	5,5	1.455,84
04332	ROP	3~230/400V 5000W	Ø102mm	11,5	1.706,47

RECIRCULATION HEATERS WITH FLANGE AND SUPPORTS

Maximum temperatura 120°C, fuel oil and oil.

2402	RFP-G	3~230/400V 4500W	Ø100mm	25	2.674,06
2412	RFP-G	3~230/400V 6000W	Ø100mm	28	2.691,30
2422	RFP-G	3~230/400V 8000W	Ø100mm	32	2.767,92
2432	RFP-G	3~230/400V 10000W	Ø100mm	36	2.853,79
2442	RFP-G	3~230/400V 13000W	Ø100mm	41	3.060,96
2452	RFP-G	3~230/400V 17000W	Ø100mm	48	3.301,20
2462	RFP-G	3~230/400V 22000W	Ø100mm	66	3.491,22
2472	RFP-G	3~230/400V 6500W	Ø125mm	36	3.279,95
2482	RFP-G	3~230/400V 9000W	Ø125mm	40	3.383,14
2492	RFP-G	3~230/400V 12000W	Ø125mm	45	3.541,04
2502	RFP-G	3~230/400V 15000W	Ø125mm	50	3.645,61
2512	RFP-G	3~230/400V 20000W	Ø125mm	57	4.029,73
2522	RFP-G	3~230/400V 26000W	Ø125mm	68	4.260,76
2532	RFP-G	3~230/400V 33000W	Ø125mm	80	4.675,59
2542	RFP-G	3~230/400V 10000W	Ø150mm	49	4.266,19
2552	RFP-G	3~230/400V 15000W	Ø150mm	55	4.366,17
2562	RFP-G	3~230/400V 20000W	Ø150mm	62	4.519,27
2572	RFP-G	3~230/400V 25000W	Ø150mm	71	4.917,27
2582	RFP-G	3~230/400V 32000W	Ø150mm	82	5.263,94
2592	RFP-G	3~230/400V 42000W	Ø150mm	96	5.763,03
2602	RFP-G	3~230/400V 55000W	Ø150mm	114	6.201,38
2612	RFP-G	3~230/400V 17000W	Ø200mm	77	6.316,65
2622	RFP-G	3~230/400V 24000W	Ø200mm	87	6.494,99
2632	RFP-G	3~230/400V 32000W	Ø200mm	100	6.828,07
2642	RFP-G	3~230/400V 40000W	Ø200mm	113	7.046,61
2652	RFP-G	3~230/400V 52000W	Ø200mm	132	7.702,63
2662	RFP-G	3~230/400V 68000W	Ø200mm	157	8.334,78
2672	RFP-G	3~230/400V 88000W	Ø200mm	185	8.898,90

Maximum temperature 120°C, for light oils and thermal oils.

9602	ROP-G	3~400V 7000W	Ø100mm	25	2.613,41
9612	ROP-G	3~400V 9000W	Ø100mm	28	2.696,63

CODE	TYPE	DESCRIPTION		Kg	€
9622	ROP-G	3~400V 12000W	Ø100mm	32	2.778,38
9632	ROP-G	3~400V 16000W	Ø100mm	36	2.872,21
9642	ROP-G	3~400V 21000W	Ø100mm	41	3.060,96
9652	ROP-G	3~400V 27000W	Ø100mm	48	3.298,49
9662	ROP-G	3~400V 33000W	Ø100mm	66	3.496,44
9672	ROP-G	3~400V 10000W	Ø125mm	36	3.310,80
9682	ROP-G	3~400V 14000W	Ø125mm	40	3.400,22
9692	ROP-G	3~400V 18000W	Ø125mm	45	3.548,04
9702	ROP-G	3~400V 24000W	Ø125mm	50	3.691,54
9712	ROP-G	3~400V 31000W	Ø125mm	57	4.119,19
9722	ROP-G	3~400V 41000W	Ø125mm	68	4.418,00
9732	ROP-G	3~400V 51000W	Ø125mm	80	4.605,93
9742	ROP-G	3~400V 16000W	Ø150mm	49	4.274,11
9752	ROP-G	3~400V 24000W	Ø150mm	55	4.384,76
9762	ROP-G	3~400V 30000W	Ø150mm	62	4.543,26
9772	ROP-G	3~400V 40000W	Ø150mm	71	5.048,99
9782	ROP-G	3~400V 52000W	Ø150mm	82	5.218,83
9792	ROP-G	3~400V 68000W	Ø150mm	96	5.717,06
9802	ROP-G	3~400V 85000W	Ø150mm	114	6.099,37
9812	ROP-G	3~400V 26000W	Ø200mm	77	6.319,29
9832	ROP-G	3~400V 48000W	Ø200mm	100	6.866,75
9842	ROP-G	3~400V 64000W	Ø200mm	113	7.123,97
9852	ROP-G	3~400V 84000W	Ø200mm	132	7.640,79
9862	ROP-G	3~400V 108000W	Ø200mm	157	8.099,21
9872	ROP-G	3~400V 136000W	Ø200mm	185	8.711,99

Maximum temperature 300°C, for light oils and thermal oils.

21422	RAT	3~400V 7000W	Ø100mm	28	2.942,79
21432	RAT	3~400V 9000W	Ø100mm	31	3.026,62
21442	RAT	3~400V 12000W	Ø100mm	35	3.108,37
20312	RAT	3~400V 16000W	Ø100mm	39	3.203,55
20322	RAT	3~400V 21000W	Ø100mm	44	3.398,77
20332	RAT	3~400V 27000W	Ø100mm	51	3.639,03
20342	RAT	3~400V 33000W	Ø100mm	69	3.839,61
21452	RAT	3~400V 10000W	Ø125mm	40	3.685,32
21462	RAT	3~400V 14000W	Ø125mm	44	3.772,42
21472	RAT	3~400V 18000W	Ø125mm	49	3.924,09
20352	RAT	3~400V 24000W	Ø125mm	54	4.057,45
20362	RAT	3~400V 31000W	Ø125mm	61	4.452,12
20372	RAT	3~400V 41000W	Ø125mm	72	4.685,66
20382	RAT	3~400V 51000W	Ø125mm	84	4.993,27
21482	RAT	3~400V 16000W	Ø150mm	54	4.801,90
21492	RAT	3~400V 24000W	Ø150mm	60	4.921,97
21502	RAT	3~400V 30000W	Ø150mm	67	5.080,36
20392	RAT	3~400V 40000W	Ø150mm	76	5.522,57
20402	RAT	3~400V 52000W	Ø150mm	87	5.765,44
20412	RAT	3~400V 68000W	Ø150mm	101	6.265,63
20422	RAT	3~400V 85000W	Ø150mm	119	6.653,71
21512	RAT	3~400V 26000W	Ø200mm	87	7.151,28
21522	RAT	3~400V 38000W	Ø200mm	97	7.355,83
21532	RAT	3~400V 48000W	Ø200mm	110	7.703,10
20432	RAT	3~400V 64000W	Ø200mm	123	7.964,22
20442	RAT	3~400V 84000W	Ø200mm	142	8.486,97
20452	RAT	3~400V 108000W	Ø200mm	167	8.948,96
20462	RAT	3~400V 136000W	Ø200mm	195	9.566,73

Maximum temperature 90°C, for water in a closed circuit.

13712	RXP-G	3~400V 13000W	Ø100mm	25	3.030,03
13722	RXP-G	3~400V 18000W	Ø100mm	28	3.180,19
13732	RXP-G	3~400V 24000W	Ø100mm	32	3.303,16
13742	RXP-G	3~400V 30000W	Ø100mm	36	3.491,98
13752	RXP-G	3~400V 40000W	Ø100mm	41	3.707,43
13812	RXP-G	3~400V 20000W	Ø125mm	36	3.934,51
13822	RXP-G	3~400V 27000W	Ø125mm	40	4.104,33
13832	RXP-G	3~400V 36000W	Ø125mm	45	4.283,22
13842	RXP-G	3~400V 45000W	Ø125mm	50	4.567,08
13852	RXP-G	3~400V 60000W	Ø125mm	57	4.952,66
13912	RXP-G	3~400V 33000W	Ø150mm	49	5.219,55
13922	RXP-G	3~400V 45000W	Ø150mm	55	5.487,96
13932	RXP-G	3~400V 60000W	Ø150mm	62	5.715,53
13942	RXP-G	3~400V 75000W	Ø150mm	71	6.162,84
13952	RXP-G	3~400V 100000W	Ø150mm	82	6.700,74
14012	RXP-G	3~400V 53000W	Ø200mm	77	7.392,18
14022	RXP-G	3~400V 72000W	Ø200mm	87	7.825,86
14032	RXP-G	3~400V 96000W	Ø200mm	100	8.327,94
14042	RXP-G	3~400V 120000W	Ø200mm	113	8.921,15
14052	RXP-G	3~400V 160000W	Ø200mm	132	9.819,50

CODE	TYPE	DESCRIPTION	Kg	€
------	------	-------------	----	---

BATTERIES AND EQUIPMENTS FOR AIR

AIR CONDITIONNING DUCT HEATERS, SLIP-IN TYPE

The price is reached by two factors: the first one (Table n°1) is common to BSI-N and BSI-D, and it determines the physical dimension of the battery: HxW

The second (Table n°2) determines the total power of the battery. It differs for BSI-N or BSI-D and this in connection with the dimension W. The value/unit., in Euros indicated on Table n°1 has to be applied repeatedly depending its total power in kW selected.

Table N°1 BSI-N, BSI-D

H 130xW 350/450/550mm	3,9	268,01
H 130xW 675/800/925mm	5,2	278,48
H 180xW 350/450/550mm	4,4	273,08
H 180xW 675/800/925mm	5,7	283,55
H 280xW 350/450/550mm	5,4	278,85
H 280xW 675/800/925mm	6,7	289,32
H 380xW 350/450/550mm	5,4	285,56
H 380xW 675/800/925mm	7,7	296,03
H 480xW 350/450/550mm	7,5	296,48
H 480xW 675/800/925mm	8,8	306,95
H 580xW 350/450/550mm	8,5	304,23
H 580xW 675/800/925mm	9,8	314,70

Table N°2 BSI-N

H...xW 350mm for each 1kW	0,36	26,34
H...xW 450mm for each 1,5kW	0,48	26,95
H...xW 550mm for each 1,75kW	0,58	28,79
H...xW 675mm for each 2kW	0,77	31,91
H...xW 800mm for each 2,5kW	0,95	34,22
H...xW 925mm for each 3kW	1,1	37,24

BSI-D

H...xW 350mm for each 0,6kW	0,36	26,10
H...xW 450mm for each 0,8kW	0,48	27,94
H...xW 550mm for each 1kW	0,58	28,65
H...xW 675mm for each 1,25kW	0,77	31,72
H...xW 800mm for each 1,5kW	0,95	34,13
H...xW 925mm for each 1,75kW	1,1	40,07

Example: BSI-N, H480xW675,30kW,3~400V, 4 steps

In table n°1 H480xW675= **296,03**

In table n°2 BSI-N, for each 2kW 30kW/2kW=15,15x... = **774,66**

Total price: Composition of the weigh: (T.n°1) 7,7Kg + (T.n°2)15x0,77=19,3Kg

CIRCULAR BATTERIES

Standard range from Ø100mm duct to Ø350mm.

42232	BTC	230V 500W	Ø100mm	2,5	145,46
42526	BTC	230V 750W	Ø125mm	2,5	146,60
60358	BTC	3~230/400V 1500W	Ø150mm	2,5	277,12
60359	BTC	3~230/400V 3000W	Ø200mm	2,6	287,68
60360	BTC	3~230/400V 4500W	Ø250mm	3,0	307,27
60361	BTC	3~230/400V 6000W	Ø300mm	4,1	362,23
60362	BTC	3~230/400V 7500W	Ø350mm	5,0	372,12

BATTERY UNIT FOR AIR TREATMENT PLANT

BTCA: Request information.

INDUSTRIAL BATTERIES

For heating the air in industrial processes, ovens, stoves, heating premises, etc.

60331	BAT	3~400V 4200W	350x425	21,9	393,37
60332	BAT	3~400V 8400W	350x425	24,9	559,99
60333	BAT	3~400V 12600W	350x425	27,9	715,17
60334	BAT	3~400V 9000W	500x545	29,8	510,81
60335	BAT	3~400V 18000W	500x545	35,4	789,87
60336	BAT	3~400V 27000W	500x545	40,9	1.068,93
60337	BAT	3~400V 12000W	650x545	35,3	608,63
60338	BAT	3~400V 24000W	650x545	42,7	977,18
60339	BAT	3~400V 36000W	650x545	50,2	1.307,75
60340	BAT	3~400V 22500W	800x795	57,8	1.130,41
60341	BAT	3~400V 45000W	800x795	63,5	1.344,76
60342	BAT	3~400V 67500W	800x795	77,8	1.880,60
60343	BAT	3~400V 27000W	950x795	55,8	882,83
60344	BAT	3~400V 54000W	950x795	72,9	1.495,09
60345	BAT	3~400V 81000W	950x795	90	2.107,46
60346	BAT	3~400V 42000W	1100x1045	65,8	1.127,36
60347	BAT	3~400V 84000W	1100x1045	85,7	1.948,23
60348	BAT	3~400V 126000W	1100x1045	105,7	2.769,16

CODE	TYPE	DESCRIPTION	Kg	€
------	------	-------------	----	---

MEDIUM AND HIGH TEMPERATURE BATTERIES

BHT / BMT: Request information.

LOAD BATTERIES

BAC: Request information.

HOT AIR GENERATOR

AER-786/AER-785: View Industrial Comfort line.

SPECIFIC PRODUCTS

DRUM HEATERS

Heating jacket.

07423	RBL	3N~400V 4000W Jacket	L-1000x650	80	2.961,83
07432	RBF	230V 1500W Base	L-1000x535	20	635,46

Accessories

12900	TCE	230V 15A Immersion thermostat		1,0	90,30
-------	-----	-------------------------------	--	-----	-------

Immersion heater without thermostat, AISI 316.

04602	DPBX	230V 1500W	3W/cm ²	2,0	125,72
04612	DPBX	230V 3000W	6W/cm ²	2,0	127,36

Immersion heater with thermostat, AISI 316.

04622	DPBTX	230V 1500W	3W/cm ²	3,2	181,28
04632	DPBTX	230V 3000W	6W/cm ²	3,2	182,57

FARM LAMP

Infrared lamp for the breeding of pigs and other farm animals.

10802	LGA	230V 250W	Ø267x365	0,88	46,76
-------	-----	-----------	----------	------	-------

RADIATION EQUIPMENT

QUARTS AND HALOGEN EMITTERS

Quartz halogen heater.

60910	RIH	240V 1000W		0,80	136,49
-------	-----	------------	--	------	--------

*Ex stock.

RIH accessories:

60833	RJ	For model 1000W	L-340	0,10	19,95
-------	----	-----------------	-------	------	-------

CERAMIC EMITTERS

Wavelength of 3 to 6 microns.

56604	IC-FTE	230V 150W	L-245x60	0,25	Consult
49165	IC-FTE	230V 250W	L-245x60	0,25	Consult
52641	IC-FTE	230V 300W	L-245x60	0,25	Consult
55559	IC-FTE	230V 350W	L-245x60	0,25	Consult
48814	IC-FTE	230V 400W	L-245x60	0,25	Consult
49235	IC-FTE	230V 500W	L-245x60	0,25	Consult
56605	IC-FTE	230V 600W	L-245x60	0,25	Consult
48708	IC-FTE	230V 650W	L-245x60	0,25	Consult
56606	IC-FTE	230V 750W	L-245x60	0,25	Consult
49236	IC-FTE	230V 1000W	L-245x60	0,25	Consult

Wavelength of 3 to 5 microns.

48696	IC-HTE	230V 125W	L-122X60	0,12	Consult
56607	IC-HTE	230V 150W	L-122X60	0,12	Consult
49868	IC-FTE	230V 220W	L-122X60	0,12	Consult
48699	IC-HTE	230V 250W	L-122X60	0,12	Consult
48815	IC-HTE	230V 325W	L-122X60	0,12	Consult
55560	IC-HTE	230V 350W	L-122X60	0,12	Consult
52640	IC-HTE	230V 400W	L-122X60	0,12	Consult
49234	IC-HTE	230V 500W	L-122X60	0,12	Consult

Edison lamp 27 ceramic thread.

-	BC	230V 60W	Ø65X140MM	0,17	Consult
-	BC	230V 100W	Ø65X140MM	0,17	Consult
-	BC	230V 100W	Ø80X110MM	0,15	Consult
11882	BC	230V 150W	Ø95X140MM	0,17	Consult
11892	BC	230V 250W	Ø95X140MM	0,17	Consult
-	BC	230V 400W	Ø140X137MM	0,25	Consult

Remark: All models of Ceramic heaters, price under request. Order for minimum 5 off.

CODE	TYPE	DESCRIPTION		Kg	€
------	------	-------------	--	----	---

METALLIC EMITTERS

Square 320x320x120mm built in polished aluminium reflector.

06712	IRP	230V 1000W	Sin caja	1,0	99,94
06722	IRP	230V 1000W	Elt. de recambio	0,2	39,21
12842	CNO	Waterproof box polyester IP65		0,21	16,29

Round reflective screen for 0,5mm aluminized steel.

09932	LIR	230V 375W		0,61	29,89
-------	-----	-----------	--	------	-------

Note: Ex stock.

Radiant panel. Galvanized chassis insulation for high temperatures.

59937	PRO	230V 2000W	11kW/m ²	7,60	433,61
59938	PRO	230V 4000W	11kW/m ²	15,7	852,11
57434	PRO	230V 3000W	17kW/m ²	7,60	683,16
44963	PRO	230V 6000W	17kW/m ²	15,7	883,88

58305	SOL	230V 1350W	15kW/m ²	4,0	446,45
-------	-----	------------	---------------------	-----	--------

57807	SOL	230V 1875W	11,6kW/m ²	6,6	481,47
-------	-----	------------	-----------------------	-----	--------

57808	SOL	230V 2330W	11,6kW/m ²	8,4	531,79
-------	-----	------------	-----------------------	-----	--------

56629	SOL	230V 3000W	10,8kW/m ²	1,10	701,05
-------	-----	------------	-----------------------	------	--------

57749	SOL	230V 4000W	10,8kW/m ²	15	969,75
-------	-----	------------	-----------------------	----	--------

IMMERSION HEATERS

Request information.

DRUM HEATERS

FIDR/200: Request information.

INDUSTRIAL WARNING

Request catalog Comercial Soler Division.

CODE	TYPE	DESCRIPTION		Kg	€
------	------	-------------	--	----	---

EXPLOSION-PROOF MATERIAL

FINNED CONVECTORS












Models without protective cover.

700EX	230V	900W	L-760	T1	9	1.285,92
700EX	230V	2100W	L-1170	T1	12	1.411,00
700EX	3~400V	4100W	L-1770	T1	21	1.694,37
700EX	3~400V	5800W	L-2270	T1	27	2.218,12
700EX	230V	500W	L-650	T2	6	1.182,35
700EX	230V	750W	L-760	T2	9	1.264,43
700EX	230V	1600W	L-1170	T2	12	1.391,45
700EX	400V	3000W	L-1770	T2	21	1.674,83
700EX	400V	4100W	L-2270	T2	27	2.016,83
700EX	230V	340W	L-650	T3	6	1.219,48
700EX	230V	450W	L-760	T3	9	1.264,43
700EX	230V	880W	L-1170	T3	12	1.391,45
700EX	230V	1700W	L-1770	T3	21	1.674,83
700EX	230V	2200W	L-2270	T3	27	2.016,83
700EX	230V	150W	L-650	T4	6	1.240,97
700EX	230V	200W	L-760	T4	9	1.285,92
700EX	230V	400W	L-1170	T4	12	1.411,00
700EX	230V	730W	L-1770	T4	21	1.694,37
700EX	230V	960W	L-2270	T4	27	2.218,12
700EX	230V	70W	L-650	T5	6	1.240,97
700EX	230V	90W	L-760	T5	9	1.285,92
700EX	230V	180W	L-1170	T5	12	1.411,00
700EX	230V	340W	L-1770	T5	21	1.694,37
700EX	230V	450W	L-2270	T5	27	2.218,12

Accessories protected grille M type.

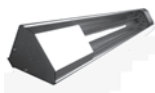
M650	385,00
M760	384,88
M1170	567,98
M1770	846,36
M2270	1.038,80

INDUSTRIAL COMFORT

CODE	TYPE	DESCRIPTION		Kg	€		
PORTABLE ELECTRONIC AIR-BLOW HEATERS							
	82002	AER-PE3	230 V	3,2 kW	7,00	318,89	
	82013	AER-PE5	3N~400 V	5,25 kW	8,00	360,89	
	82023	AER-PE6	3N~400 V	6 kW	13,0	532,55	
	82033	AER-PE9	3N~400 V	9 kW	13,0	577,17	
	82043	AER-PE12	3N~400 V	12 kW	15,0	629,69	
	82053	AER-PE15	3N~400 V	15 kW	15,0	680,74	
	82012	AER-PE5	3~230 V	5,25 kW	8,00	435,34	
	82022	AER-PE6	3~230 V	6 kW	13,0	560,33	
	82032	AER-PE9	3~230 V	9 kW	13,0	646,34	
	82042	AER-PE12	3~230 V	12 kW	15,0	706,53	
PORTABLE AIR-BLOW HEATER HIGH POWER							
	82055	AER-P27	3N~400 V	27 kW	32,0	1.352,06	
ELECTRONIC WALL-MOUNTED AIR-BLOW HEATER							
	82063	AER-ME6	3N~400 V	6 kW	14,5	475,96	
	82073	AER-ME9	3N~400 V	9 kW	14,5	552,37	
	82083	AER-ME12	3N~400 V	12 kW	16,5	626,50	
	82093	AER-ME15	3N~400 V	15 kW	16,5	654,22	
	82062	AER-ME6	3~230 V	6 kW	14,5	522,89	
	82072	AER-ME9	3~230 V	9 kW	14,5	611,07	
	82082	AER-ME12	3~230 V	12 kW	16,5	671,04	
Accessories							
	19500	MANDO	Digital electronic control IP31		1,25	55,99	
AIR-BLOW HEATERS FOR FARMS							
	77157	AER-G5	3N~400 V	5,25kW	7,00	418,93	
HOR AIR GENERATORS							
	07853	AER-785	3N~400 V	12kW	37,0	2.685,08	
	07863	AER-786	3N~400 V	22,5kW	57,0	3.830,86	
Accessories							
	07891	CX	Hose, of -60 to 300°C. Red colour.		1,85	309,13	
	07880	A	Clip fixation to the hose.		0,36	11,78	
EXPLOSION-PROOF AIR-BLOW HEATERS							
	78156	AER-EX	3~400 V	3kW	-	Consult	
	78157	AER-EX	3~400 V	6kW	-	Consult	
	78158	AER-EX	3~400 V	9kW	-	Consult	
	78159	AER-EX	3~400 V	12kW	-	Consult	
	78160	AER-EX	3~400 V	15kW	-	Consult	
	79265	AER-EX	3~400 V	18kW	-	Consult	
	79266	AER-EX	3~400 V	30kW	-	Consult	
	79267	AER-EX	3~400 V	40kW	-	Consult	
CEILING AIR-BLOW HEATERS							
	10433	AER-T1043	3N~400 V	12kW	18,4	1.043,04	
	10453	AER-T1045	3N~400 V	18kW	20,0	1.106,90	
	10473	AER-T1047	3N~400 V	24kW	22,6	1.163,26	
Accessories							
	42125	C. TENSION	Change of voltage 230V AER-T1043			116,85	
	42126	C. TENSION	Change of voltage 230V AER-T1045			282,04	
	42127	C. TENSION	Change of voltage 230V AER-T1047			509,74	
	19400	C-1940	Stop, Ventilation, Partial power, Total power.		0,25	62,69	
ADJUSTABLE RADIANT PANEL							
	34102	PR	230 V	3500W	11,0	412,58	
INFRARED WALL RADIATORS							
	33002	RI-S 500	230 V	750 W	L-500	1,48	80,28
	33012	RI-S 750	230 V	1100 W	L-750	1,75	98,61
	33013	RI-S 750	400 V	1100 W	L-750	1,76	99,19
	33022	RI-S 1000	230 V	1500 W	L-1000	2,12	104,70
	33023	RI-S 1000	400 V	1500 W	L-1000	2,12	110,07
	33082	RI-S 1250	230 V	1900 W	L-1250	2,30	147,52
	33083	RI-S 1250	400 V	1900 W	L-1250	2,30	148,96
	33092	RI-S 1500	230 V	2300 W	L-1500	2,50	161,35
	33093	RI-S 1500	400 V	2300 W	L-1500	2,50	161,62

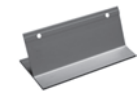
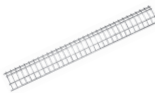
COMFORT INDUSTRIAL LINE

CODE	TYPE	DESCRIPTION			Kg	€
33032	RI-D 500	230 V	1500 W	L-500	1,63	86,93
33042	RI-D 750	230 V	2200 W	L-750	2,00	106,95
33043	RI-D 750	400 V	2200 W	L-750	2,00	106,69
33052	RI-D 1000	230 V	3000 W	L-1000	2,38	114,30
33053	RI-D 1000	400 V	3000 W	L-1000	2,38	116,43
33063	RI-D 1250	400 V	3800 W	L-1250	2,50	157,88
33073	RI-D 1500	400 V	4600 W	L-1500	2,76	168,54



Accessories and spare parts:

03060	R-500			Grid 500mm	0,16	11,96
03070	R-750			Grid 750mm	0,20	18,08
03080	R-1000			Grid 1000mm	0,22	21,38
33100	R-1250			Grid 1250mm	0,30	23,90
33200	R-1500			Grid 1500mm	0,40	37,66
03090	S-309	Adjustable support wall			0,30	12,54
09102	TR-500	230 V	750 W	L- 545	0,13	9,46
09112	TR-750	230 V	1100 W	L- 795	0,19	10,57
09113	TR-750	400 V	1100 W	L- 795	0,19	11,10
09122	TR-1000	230 V	1500 W	L- 1046	0,25	12,03
09123	TR-1000	400 V	1500 W	L- 1046	0,25	12,19
09132	TR-1250	230 V	1900 W	L- 1296	0,30	13,96
09133	TR-1250	400 V	1900 W	L- 1296	0,30	13,20
09142	TR-1500	230 V	2300 W	L- 1546	0,37	14,44
09143	TR-1500	400 V	2300 W	L- 1546	0,37	14,57



INFRARED RADIATORS FOR EXTERIEURS

33303	RI-EXT N	230 V	1200 W	IP65 exterior	0,95	119,83
33313	RI-EXT N	230 V	1760 W	IP65 exterior	1,00	130,28
33322	RI-EXT	230 V	3x1200 W	Includes tripod	18,0	670,43
33402	RI-EXTL	230 V	1200 W	IP55	1,30	193,68
33412	RI-EXTL	230 V	1800 W	IP55	1,50	209,00
33602	RI-EXTP	230 V	800 W	IP55 with wall bracket	0,90	165,38
33612	RI-EXTP	230 V	1200 W	IP55 with wall bracket	1,00	177,08
33622	RI-EXTS	230 V	800 W	IP55 with umbrella support	0,90	171,80
33632	RI-EXTS	230 V	1200 W	IP55 with umbrella support	1,00	184,26



Accessories and spare parts:

33350	S768TRIP	Support tripod for RI-EXT				33,64
33360	TRIP	Tripod for RI-EXT				63,44
33370	S768M	Wall support for RI-EXT				15,82
33380	S768T	Chains for RI-EXT and RI-EXTL				12,83
33460	S003205	Foot support for RI-EXTL	2090x796x796mm			219,96
33470	S768T	Wall support or fixing a tripod RI-EXTL				32,22
68107	LAM. IR-A	Spare tube for RI-EXT 1200W				26,45
68108	LAM. IR-A	Spare tube for RI-EXT 1800W				37,50
76152	LAM. IR-A	Spare tube for RI-EXTL 1200W				42,50
76153	LAM. IR-A	Spare tube for RI-EXTL 1800W				45,82
76155	LAM. IR-A	Spare tube for RI-EXTS and RI-EXTP 800W				39,15
76156	LAM. IR-A	Spare tube for RI-EXTS and RI-EXTP 1200W				43,26



WALL INFRARED SCREENS

33490	PIM1-20	230 V	2000 W		235x486x313	2,20	247,22
33510	PIM2-40	230 V	4000 W		375x496x313	3,00	362,79
33530	PIM3-60	230 - 400 V	6000 W		515x496x313	3,80	475,77
33540	PIM+1-20	230 V	2000 W	IP65	235x486x313	1,70	303,28
33550	PIM+2-40	230 V	4000 W	IP65	375x496x313	2,40	418,39
33560	PIM+3-60	230 - 400 V	6000 W	IP65	515x496x313	3,00	531,51



Spare parts:

76154	LAM. IR-A	Spare tube for PIM				59,14
78591	LAM. IR-A	Spare tube for PIM+				126,93

BLACK LIGHT RADIANT HEATER

33585	PIBL-15	230V	1500W	IP65	L-1022	5,75	308,41
33590	PIBL-18	230V	1800W	IP65	L-1172	6,55	339,53
33595	PIBL-24	230V	2400W	IP65	L- 1472	8,30	371,03
33600	PIBL-32	230V	3200W	IP65	L- 1872	11,1	407,87



Accessories and spare parts:

33680	SUPPORT PIBL	Double support 7701				64,37
33690	JUNTA PIBL	Joint 7702				38,08
33700	EXTENSIO PIBL	Rear extension 7703				34,00

HEATER GLASS FRONT

33570	FIR-W	230V 1300W	Wide focusing		360x155x320	3,70	257,76
33580	FIR-D	230V 1300W	Deep focusing		360x155x320	3,70	267,84



CODE	TYPE	DESCRIPTION		Kg	€
------	------	-------------	--	----	---

Spare part:

78592	LAM. IR-A	Spare tube for FIR			66,85
-------	-----------	--------------------	--	--	-------

CONVECTOR PANELS

34042	PANCO-6,5	230 V	650 W	L-450	4,00	39,72
34092	PANCO-12	230 V	1200 W	L-660	5,50	48,83

CONVECTORS

07202	CEM-500	230 V	250 W	L-500	6,00	194,20
07212	CEM-500	230 V	750 W	L-500	7,00	231,02
07222	CEM-750	230 V	400 W	L-750	8,00	217,86
07232	CEM-750	230 V	1200 W	L-750	6,50	262,17
07242	CEM-1000	230 V	600 W	L-1000	7,50	234,93
07252	CEM-1000	230 V	1800 W	L-1000	8,50	283,14

FORCED AIR CONVECTOR

19922	CON-AF	230 V	2kW	L-720	8,10	353,86
-------	--------	-------	-----	-------	------	--------

CURTAINS SHORT RANGE

With heating.

73924	COR-P2E	230 V	2,5kW	L-600	10,0	321,14
73925	COR-P3E	230 V	3,2kW	L-900	13,5	391,46
19563	COR-1956	3N~400 V	10kW	L-2060	40,0	1.636,68
21262	COR-1000E	3N~400 V	4/6kW	L-1000	19,5	989,21
21282	COR-1500E	3N~400 V	6/9kW	L-1500	28,5	1.160,33
21242	COR-2000E	3N~400V	5,6/11,3kW	L-2000	42,0	1.720,57

Without heating.

73956	COR-P2A	230 V		L-600	9,00	262,54
73957	COR-P3A	230 V		L-900	12,5	325,83
21252	COR-1000A	230 V		L-1000	17,5	656,35
21272	COR-1500A	230 V		L-1500	25,0	726,67
21292	COR-2000A	230V		L-2000	33,0	1.078,29

Option recessed with heating.

68500	CORE-1000E	3N~400 V	4/6kW	L-1000	26,0	1.209,56
68501	CORE-1500E	3N~400 V	6/9kW	L-1500	37,5	1.458,03
77502	CORE-2000E	3N~400V	5,6/11,3kW	L-2000	53,5	2.109,69

Option recessed without heating.

68502	CORE-1000A	230 V		L-1000	24,0	909,51
68503	CORE-1500A	230 V		L-1500	34,0	1.029,06
77504	CORE-2000A	230V		L-2000	44,5	1.408,80

CURTAINS MEDIUM RANGE

With heating.

21003	LPS 1000E	3N~400 V	3/6/9 kW	L-1000	41,0	2.116,72
21013	LPS 1500E	3N~400 V	4/8/12 kW	L-1500	62,0	2.533,97
21023	LPS 2000E	3N~400 V	6/12/18 kW	L-2000	80,0	2.965,29
21033	LPS 2500E	3N~400 V	6/12/18 kW	L-2500	86,0	3.755,25
21103	LPM 1000E	3N~400 V	3/6/9 kW	L-1000	41,0	2.238,62
21113	LPM 1500E	3N~400 V	4/8/12 kW	L-1500	62,0	2.714,47
21123	LPM 2000E	3N~400 V	6/12/18 kW	L-2000	80,0	3.173,91
21133	LPM 2500E	3N~400 V	6/12/18 kW	L-2500	86,0	4.062,33
21203	LPG 1000E	3N~400 V	5/10/15 kW	L-1000	41,0	2.503,50
21213	LPG 1500E	3N~400 V	7,5/15/22,5 kW	L-1500	62,0	3.009,83
21223	LPG 2000E	3N~400 V	10/20/30 kW	L-2000	80,0	3.853,70
21233	LPG 2500E	3N~400 V	10/20/30 kW	L-2500	86,0	4.765,56

Without heating.

59085	LPS 1000A	230 V		L-1000	34,0	1.446,31
59086	LPS 1500A	230 V		L-1500	50,0	1.779,17
59087	LPS 2000A	230 V		L-2000	62,0	2.156,57
59088	LPS 2500A	230 V		L-2500	66,0	2.714,47
59089	LPM 1000A	230 V		L-1000	34,0	1.584,61
59090	LPM 1500A	230 V		L-1500	50,0	2.008,89
59091	LPM 2000A	230 V		L-2000	62,0	2.402,70
59092	LPM 2500A	230 V		L-2500	66,0	3.061,40
59093	LPG 1000A	230 V		L-1000	34,0	1.877,63
59094	LPG 1500A	230 V		L-1500	50,0	2.273,78
59095	LPG 2000A	230 V		L-2000	62,0	3.000,45
59096	LPG 2500A	230 V		L-2500	66,0	3.649,77

Option recessed with heating.

68504	LPSE 1000E	3N~400 V	3/6/9 kW	L-1000	58,0	2.749,63
68505	LPSE 1500E	3N~400 V	4/8/12 kW	L-1500	87,0	3.187,98

CODE	TYPE	DESCRIPTION			Kg	€
68506	LPSE 2000E	3N~400 V	6/12/18 kW	L-2000	114	3.696,65
68507	LPSE 2500E	3N~400 V	6/12/18 kW	L-2500	128	4.420,97
68508	LPME 1000E	3N~400 V	3/6/9 kW	L-2500	128	2.883,24
68509	LPME 1500E	3N~400 V	4/8/12 kW	L-1000	58,0	3.377,85
68510	LPME 2000E	3N~400 V	6/12/18 kW	L-1500	87,0	3.931,06
68511	LPME 2500E	3N~400 V	6/12/18 kW	L-2000	114	4.709,30
68512	LPGE 1000E	3N~400 V	5/10/15 kW	L-1000	58,0	3.138,75
68513	LPGE 1500E	3N~400 V	7,5/15/22,5 kW	L-1500	87,0	3.701,34
68514	LPGE 2000E	3N~400 V	10/20/30 kW	L-2000	114	4.566,31
68515	LPGE 2500E	3N~400 V	10/20/30 kW	L-2500	128	5.375,02

Option recessed without heating.

68516	LPSE 1000A	230 V		L-1000	51,0	1.985,45
68517	LPSE 1500A	230 V		L-1500	75,0	2.365,20
68518	LPSE 2000A	230 V		L-2000	96,0	2.801,20
68519	LPSE 2500A	230 V		L-2500	108	3.195,01
68520	LPME 1000A	230 V		L-1000	51,0	2.128,44
68521	LPME 1500A	230 V		L-1500	75,0	2.543,35
68522	LPME 2000A	230 V		L-2000	96,0	3.005,14
68523	LPME 2500A	230 V		L-2500	108	3.497,40
68524	LPGE 1000A	230 V		L-1000	51,0	2.381,61
68525	LPGE 1500A	230 V		L-1500	75,0	2.808,23
68526	LPGE 2000A	230 V		L-2000	96,0	3.499,74
68527	LPGE 2500A	230 V		L-2500	108	3.999,04

CURTAINS HIGH RANGE

With heating.

68529	LPL-1000E	3N~400 V	10/15/25 kW	L-1000	70,0	4.992,94
68530	LPL-1500E	3N~400 V	15/22,5/37,5 kW	L-1500	99,0	6.582,24
68531	LPL-2000E	3N~400 V	20/30/50 kW	L-2000	127	8.319,22
68532	LPL-2500E	3N~400 V	24/36/60 kW	L-2500	159	9.742,08
68533	LPL-3000E	3N~400 V	24/36/60 kW	L-3000	188	11.310,29

Without heating.

68535	LPL-1000A	230 V		L-1000	56,0	3.565,38
68536	LPL-1500A	230 V		L-1500	79,0	4.495,99
68537	LPL-1500A	230 V		L-2000	102	5.867,29
68538	LPL-2500A	230 V		L-2500	125	6.936,20
68539	LPL-3000A	230 V		L-3000	148	8.148,10

Vertical model, with heating.

68556	LPX-2E	3N~400 V	13,7/22,9/36,6 kW	L-1236	74,0	7.306,56
68557	LPX-3E	3N~400 V	20,7/34,7/55,4 kW	L-1814	100	9.120,90
68558	LPX-4E	3N~400 V	27,8/46,4/74,2 kW	L-2392	133	10.503,92
68559	LPX-5E	3N~400 V	34,8/58,2/93 kW	L-2970	159	12.001,80

Vertical model, without heating.

68560	LPX-2A	230 V		L-1236	59,0	2.946,54
68561	LPX-3A	230 V		L-1814	79,0	4.130,31
68562	LPX-4A	230 V		L-2392	103	4.992,94
68563	LPX-5A	230 V		L-2970	124	5.832,12

GENERAL SALES CONDITIONS:

The order confirmation means the acceptance by buyer of the following conditions of sale :

PRICES:

The new price list cancels the previous one.

The prices of our price list refers to material or equipments which specifications are stated in the same price list or its catalogue.

Prices are EXWORK our factory, packing and collect freight are at buyer charge.

Any extra charge, due to modifications required by buyer, after order confirmation, may affect the price.

In this way, inspection charges or Certifications by Official Organizations will be at buyer charge.

The price of some products mentioned on our catalogue may not appear in this price list, in this case pls contact with our Commercial department.

Modifications of prices and availability may be produced with no previous announcement.

CONDITIONS OF SETTLEMENT:

Payment at sight discount 2%.

Orders lower than 150,00.- Euro will include in the invoice 3,00.- Euro for handling.

The proceed of a claim does not allow the right to buyer for cancelling or deducting the pending amounts.

Our sales always are under reserve of property. Consequently, property transfer of goods to our customers, is under reserve up to settlement of complete amount, interest and charges.

WARRANTY:

IES warrants its products against any building default or material during one year since the date of supplying goods. The warranty is restrictive to the replacement or repairing, at our approach, of element, in case that it has been used according with specifications. The use of one element in applications or different conditions than established it will revert to the user responsibility, and warranty will be cancelled.

Elements that are used in corrosive waters, fluids and chemical solutions, are never warranty against corrosion or any other defective of such origin.

In case of long storage or inactivity, heating elements may be affected by humidity which decrease temporary the value of electrical isolation.

This fact may be replace with a previous heating or connection. Pls contact with our Commercial department.

RETURN OF THE GOODS:

Any returning of goods must be previously accepted from our side.

Goods must be returning back free of freight charges with previous announcement and agreement of our Commercial dpt., including the warranty card or copy of invoice. Once verify by our Quality dpt., it will be repaired or replaced in case it is necessary.

Elements already handling, non properly used or mechanical damages, will not be attended and will be at customer disposal during 30 days.

After such date they will be refused. In case that returned standard goods are accepted, the credit note will be established based on 90 % of the invoice value, excluding package, except new compensatory order.

Settlement of resultant credit amount will be deducted from following new orders.

RESPONSABILITY:

The complete responsibility for any claim will be limited at unit price or service that has been produced. In any case the responsibility will be about accidents or incidents (accidents to persons, damages to other property, financial or economical consequences).

EXEMPTION:

Any discrepancy will be liability of Tribunal and Court of Justice of Barcelona, with clear refusing of any exemption.

INDUSTRIAS ELÉCTRICAS SOLER, S.A.



P. Misericòrdia, s/n Apartat de Correus 22
08360 Canet de Mar - Barcelona (ESPAÑA)

Ph. Export Dept.

+34 937 943 980

Fax +34 937 943 973

E-mail: export@iessoler.com
<http://www.iessoler.com>



03/15 313.00A 0,25M