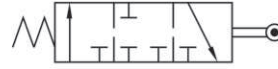


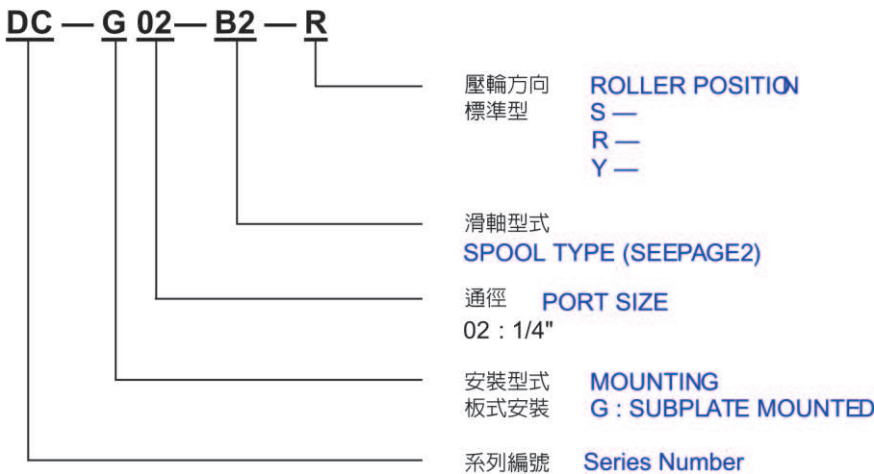


Solenoid Controlled Pilot Operated Directional Valves

電液換向閥



型號說明/HOW TO ORDER



規格說明/SPECIFICATIONS

型式 MODEL	最大壓力 MAX. PRESSURE kgf/cm ²	最大容許背壓 MAX. BACK PRESSURE kgf/cm ²	最大流量 MAX FLOW LPM	重量 WEIGHT kg
DC-G02-B2-10	210	70	30	1.3

凸輪位置與流量方向說明/SPECIFICATIONS

型式 MODEL	符號 SYMBOL	滾輪位置和流量 ROLLER POSITION VS. FLOW (mm)
DC-G02-2B-10		

附件/ATTACHMENT

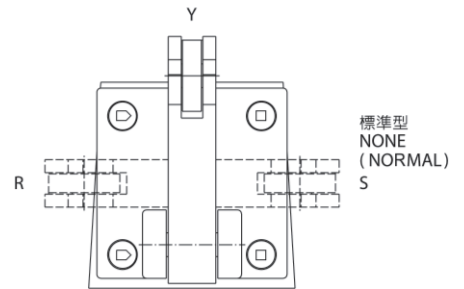
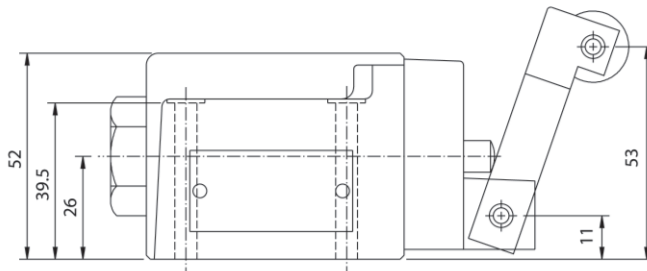
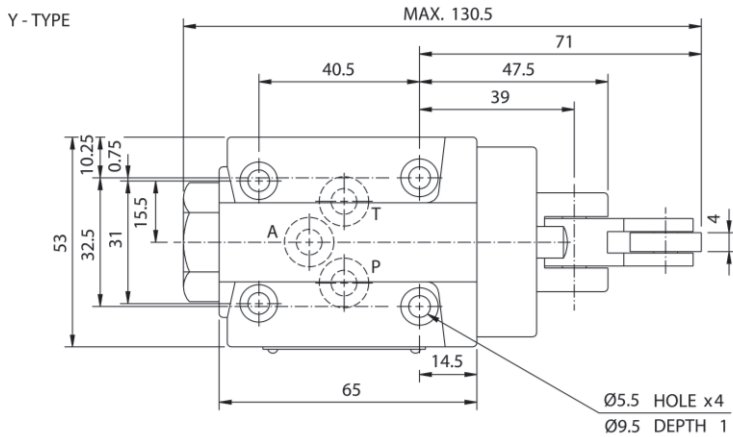
型式 MODEL	安裝螺絲 SOC HOL CAP SCREW	鎖緊扭力 TIGHTENING TORQUE
DC-G02	M5×45L..... 4pcs	50-70 kg f/cm ²



Cam Operated Directional Valve 凸輪式換向閥

安裝尺寸/INSTALLATION DIMENSIONS

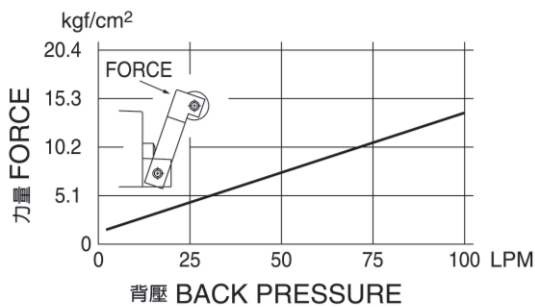
■ DC-G02-2B-10



測試條件/PERFORMANCE CURVES

測試油粘度: TEST FLUID VISCOSITY: 35 cSt
 測試油溫度: TEST TEMPERATURE: 50°C

■ DC-G02-2B-10



■ DC-G02-2B-10

