

TYPE

APR

DOPPIO EFFETTO
SINGOLO EFFETTO
DOUBLE ACTING (D.A.)
SINGLE ACTING (S.A.)

ATTUATORE PNEUMATICO PNEUMATIC ACTUATORS

ACTIONNEURS PNEUMATIQUE PNEUMATISCHE ANTRIEBE



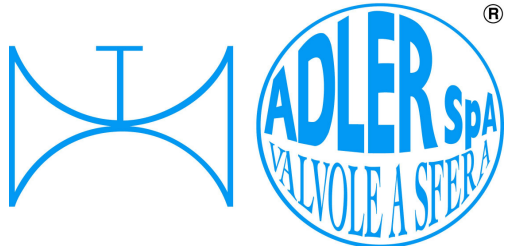
According to S.I.L. 3

CONNECTION ADLER'S VALVES STRAIGHT WAY PN 40 / ACTUATORS WITH AIR AT 5 bar															
DN	10	15	20	25	32	40	50	65	80	100	125	150	200	250*	300*
APR D.A.	32	50	50	63	63	75	85	100	115	125	160	160	200	200	270
APR S.A.	50	50	63	75	75	85	100	115	125	140	160	200	270	270	

* PN 16

PRESSIONE DI ALIMENTAZIONE:	min. pressione di alimentazione 5 bar. max. pressione di alimentazione 10 bar .	PRESSURE RANGE:	min. working pressure 5 bar. max. working pressure 10 bar.
ALIMENTAZIONE:	aria secca o lubrificata, filtrata.	SUPPLY:	filtered dry or lubricated air.
TEMPERATURA:	-20°C a +80°C	TEMPERATURE RANGE:	-20°C to +80°C
CORSA:	90° con regolazione meccanica ±3°.	STROKE:	90° with standard adjustment ±3°.
LUBRIFICAZIONE:	tutte le parti in movimento sono lubrificate a vita.	LUBRICATION:	all moving parts are factory lubricated for cycle life of the actuator.
COSTRUZIONE:	ideale per essere installata in ambienti interni ed esterni.	CONSTRUCTION:	suitable for indoor and outdoor installation.
CONNESSIONI:	foratura inferiore per accoppiamento valvola, secondo NORME ISO 5211/DIN 3337. Interfaccia per elettrovalvola, estremità superiore albero e foratura superiore per fissaggio accessori secondo NORME VDI/VDE 3845, NAMUR.	CONNECTIONS:	bottom drilling to match valve in accordance with ISO 5211/DIN 3337. Interface for solenoid valve, shaft top end and top drilling to assemble accessories are in accordance with VDI/VDE 3845, NAMUR.

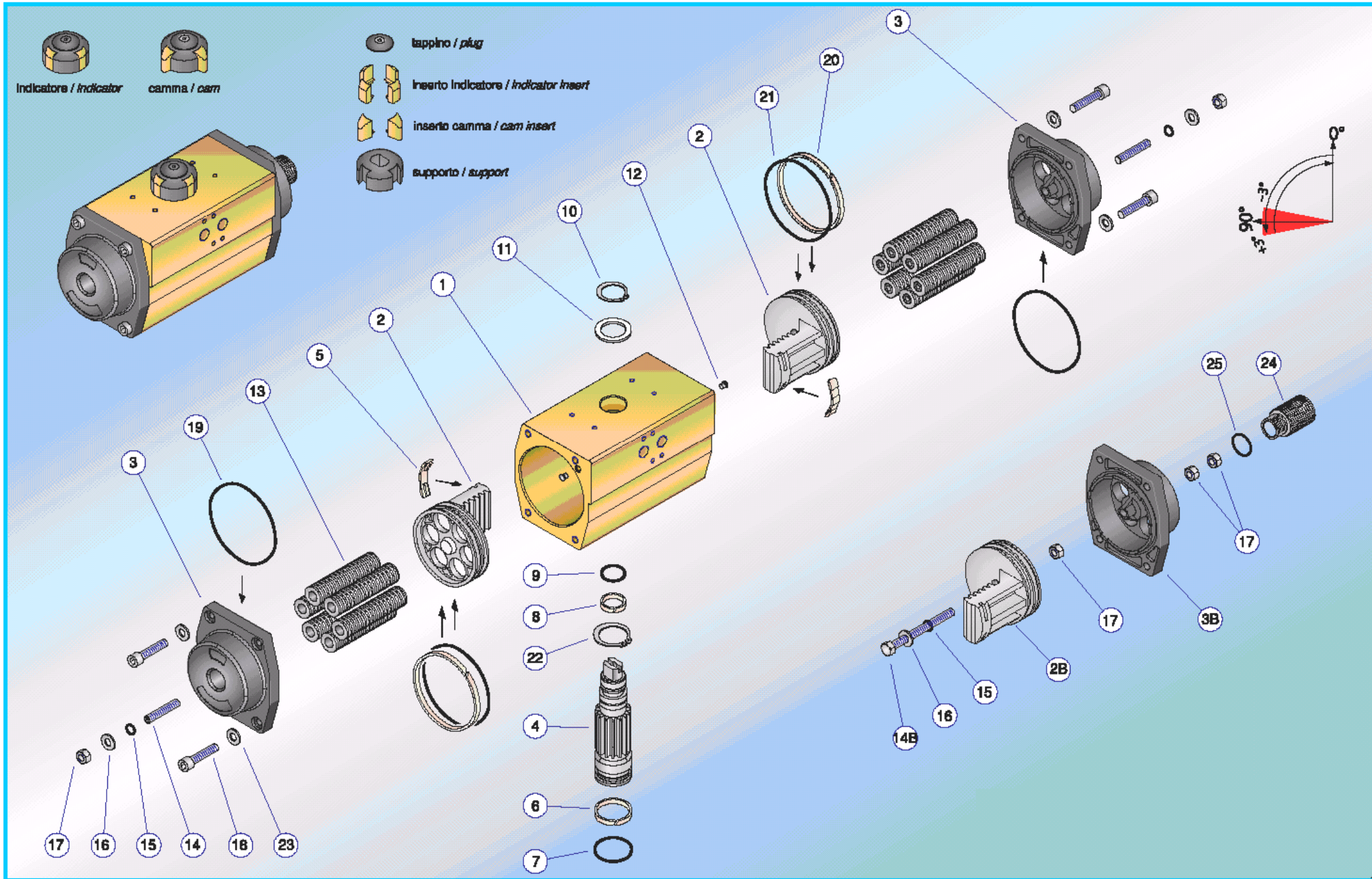
APR/08 RIPRODUZIONE VIETATA - COPYRIGHT



TYPE APR

DOPPIO EFFETTO
SINGOLO EFFETTO
DOUBLE ACTING (D.A.)
SINGLE ACTING (S.A.)

ATTUATORE PNEUMATICO PNEUMATIC ACTUATORS ACTIONNEURS PNEUMATIQUE PNEUMATISCHE ANTRIEBE



Pos. Item	DESCRIZIONE DESCRIPTION	Q.tà - Q.ty
1	Corpo attuatore Actuator body	1
2-2B	Pistone Piston	1+1
3-3B	Testata End-cap	1+1
4	Albero Pinion	1
5*	Guida pistone Piston guide	2
6*	Anello inf. Guida albero Lower Pinion guide ring	1
7*	"O" ring "O" ring	1
8*	Anello sup. guida albero Upper Pinion guide ring	1
9*	"O" ring "O" ring	1
10	Seeger Circlip	1
11	Anello distanziale Distance ring	1
12*	Tappo Plug	2
13	Molle Springs	4÷12
14	Vite di regolazione esterna External adjusting screw	1
14B*	Vite di regolazione interna Internal adjusting screw	1
15*	"O" ring "O" ring	2
16	Rosetta Washer	2
17	Dado di bloccaggio Stop nut	2
18	Vite testate Screw end-cap	8
19*	"O" ring "O" ring	2
20*	Anello guida pistone Piston guide ring	2
21*	"O" ring "O" ring	2
22	Seeger blocca albero Circlip anti-blow out	1
23	Rosetta Washer	8
24	Tappo filettato Threaded plug	1
25	"O" ring "O" ring	1

* Parti di ricambio consigliate per ordinaria manutenzione
* Suggested spare parts list for maintenance.

APR/08 RIPRODUZIONE VIETATA - COPYRIGHT

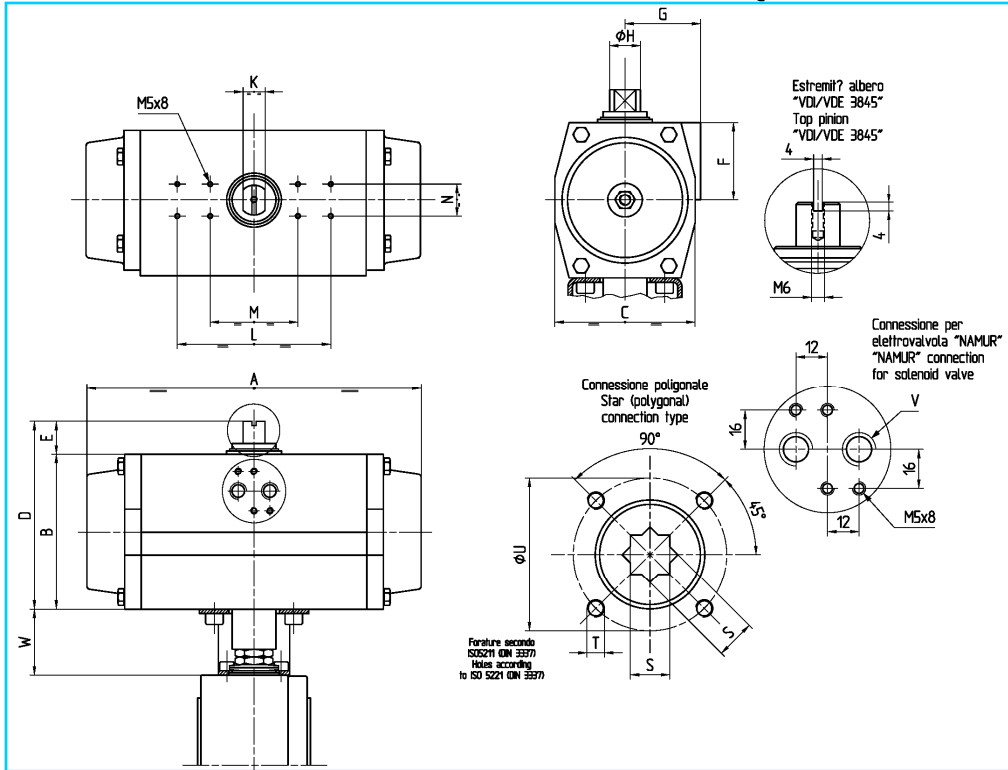
DESCRIZIONE - DESCRIPTION	MATERIALI STANDARD - STANDARD MATERIALS	FINITURA - FINISHING
CORPO ATTUATORE / ACTUATOR BODY	LEGA D'ALLUMINIO ESTRUSO / EXTRUDED ALUMINIUM ALLOY	ANOD. ORO O DURO / GOLD OR HARD ANODIZED
PISTONE / PISTON	LEGA D'ALLUMINIO PRESSOFUSO / PRESSURE DIE CASTING ALUMINIUM ALLOY	NATURALE / NATURAL
TESTATA / END-CAP	LEGA D'ALLUMINIO PRESSOFUSO / PRESSURE DIE CASTING ALUMINIUM ALLOY	RIVEST. EPOSSIDICO NERO / BLACK EPOXY COATED
ALBERO / PINION	ACCIAIO AL CARBONIO / CARBON STEEL	NICHELATURA CHIMICA / E.N.P.
GUIDA PISTONE / PISTON GUIDE	DELRIN / DELRIN	NATURALE / NATURAL
"O" RINGS / "O" RINGS	GOMMA NITRILICA (BUNA N) / NITRILE RUBBER (BUNA N)	60 IRHD / 60 IRHD
MOLLE / SPRINGS	ACCIAIO PER MOLLE / SPRING STEEL	VERNICE IN CATAFORESI / CATAPHORESIS COATED
VITTE DADI / SCREW AND NUTS	ACCIAIO INOX / STAINLESS STEEL	NATURALE / NATURAL

TYPE	TORQUE OUTPUT FROM ACTUATORS Nm												
	32	50	63	75	85	100	115	125	140	160	200	270	
APR D.A.	6	14.8	23.5	50	85	119	218	278	394	567	1064	2695	
APR S.A.*		7	11.2	24	48	57	106.6	135	200	280	504	1316	
		4.8	7.6	16	25	37	68	86	113.3	167	320	872	
		10	15.9	34	60	82	150	192	280.8	400	744	1823	
	7.8	12.3	26	37	62	111.4	143	194.1	287	560	1376		
*S.A. WITH 5 SPRINGS ON EACH SIDE			SPRING STROKE 90°			SPRING STROKE 0°			0°			90°	



TYPE DA SA APR

ATTUATORE PNEUMATICO-PNEUMATIC ACTUATORS-ACTIONNEURS PNEUMATIQUE-PNEUMATISCHE ANTRIEBE

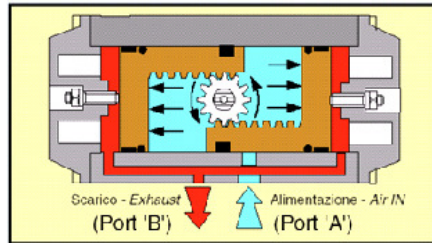


TYPE	A	B	C	D	E	F	G	H	K	L	M	N	S	T	U	V	W*	ISO 5211 STD	LITERS	
																			DA	SA
APR32	115	45	51	65	20				8		50	25	9	M5	36	1/8"	40	F03	0.05	
APR50	142	67	60	87	20	42	41	12	8		80	30	9	M5 M6	36 50	1/8"	40	F03 - F05	0.10	0.08
APR63	155	83	73	103	20	42	44.5	12	8		80	30	11	M5 M6	42 50	1/4"	40	F05	0.16	0.12
APR75	213	100	85	120	20	50	49.5	14	10		80	30	14	M6 M8	50 70	1/4"	60	F05 - F07	0.44	0.24
APR85	236	110	98	130	20	50	53	19	14		80	30	17	M8	70	1/4"	60	F07	0.56	0.48
APR100	276	125	110	145	20	50	58	19	14		80	30	17	M8 M10	70 102	1/4"	60	F07 - F10	0.96	0.68
APR115	310	142	128	172	30	58	69	28	20	130	80	30	22	M10	102	1/4"	60	F10	1.6	1
APR125	366	155	140	185	30			28	20	130	80	30	22	M10	102	1/4"	60	F10	2.16	1.4
APR140	388	176	160	206	30			36	28	130	80	30	27	M12	125	1/4"	60	F12	2.56	1.6
APR160	468	200	175	230	30			36	28	130	80	30	27	M12	125	1/4"	80	F12	4	3.2
APR200	563	250	215	300	50			48	32	130	30	36	M16	140	1/4"	80	F14	8.6	5.3	
APR270	750	335	290	385	50			48	32	130	30	46	M20	165	1/4"	100	F16	16.5	14.2	

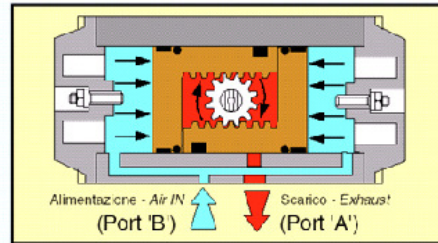
*W= altezza gabbietta attacco valvola/attuatore – height bracket connection valve/actuator

TYPE	~kg	
	DA	SA
APR32	0.51	
APR50	1	1.12
APR63	1.42	1.56
APR75	2.54	3.1
APR85	3.68	4.3
APR100	5.1	6.2
APR115	8.24	9.67
APR125	10.1	12.62
APR140	13.94	17.09
APR160	19.66	23.86
APR200	36.6	44.82
APR270	77	101

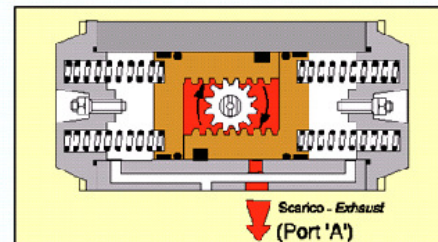
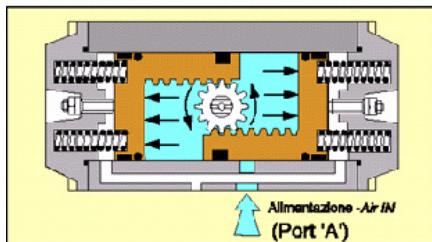
PISTON IN OPENING STAGE



PISTON IN CLOSING STAGE



ATTUATORI
A DOPPIO
EFFETTO
DOUBLE
ACTING
ACTUATORS



ATTUATORI
A SEMPLICE
EFFETTO
SINGLE
ACTING
ACTUATORS

DATI E CARATTERISTICHE
SOGGETTI A VARIAZIONI SENZA
PREAVVISO
SPECIFICATIONS SUBJECT TO
MODIFICATION WITHOUT PRIOR
NOTICE TOURS DROITS
MODIFICATION RESERVES
KONSTRUKTIONÄNDERUNGEN
VORBEHALTEN

APR/08 RIPRODUZIONE VIETATA - COPYRIGHT