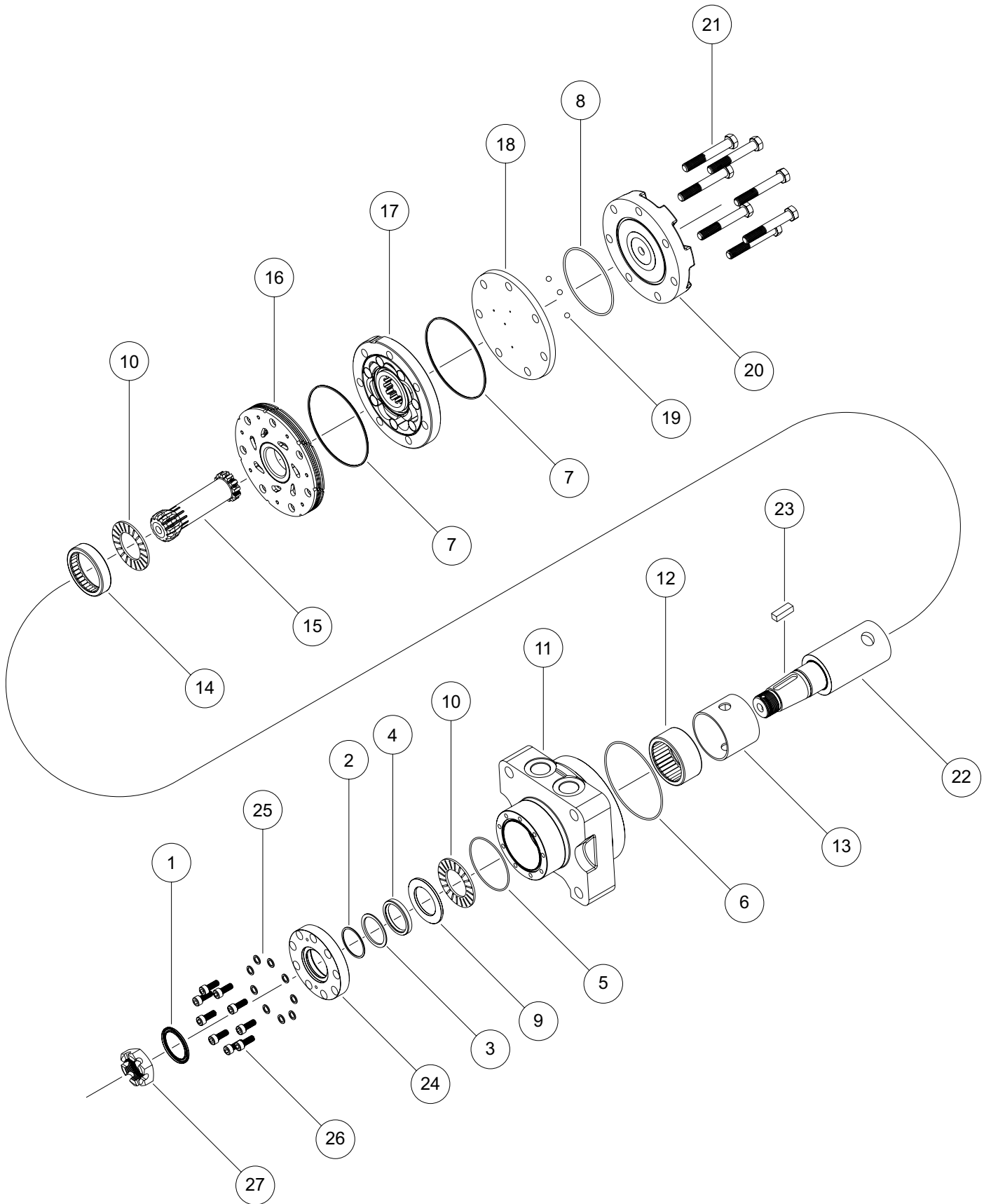


# RE (505) Series



# RE (505) SERIES MOTOR COMPONENTS

## SEAL KITS

DESCRIPTION	ITEM #	PART/KIT #
DUST SEAL	1	
BACKUP SHIM	2	ITEMS # 1-5 INCLUDED
BACKUP SEAL	3	IN SEAL KIT 500444505
SHAFT SEAL	4	(BUNA SHAFT SEAL)
SEAL CARRIER SEAL	5	
HOUSING SEAL	6	ITEMS # 1-5 INCLUDED
BODY SEALS (2)	7	IN SEAL KIT 500444505EG
ENDCOVER SEAL	8	(VITON SHAFT SEAL)
		ITEMS # 1-8 INCLUDED
		IN SEAL KIT 500444506
		(BUNA SHAFT SEAL)
		ITEMS # 1-8 INCLUDED
		IN SEAL KIT 500444506EG
		(VITON SHAFT SEAL)

## MISCELLANEOUS KITS

DESCRIPTION	ITEM #	PART/KIT #
THRUST WASHER	9	530018102
THRUST BEARING	10	500018059
FRONT HSG BEARING	12	500018003
BEARING SPACER	13	500018305
REAR HSG BEARING	14	500018002
MANIFOLD (505 SERIES)	16	500015006
MANIFOLD (506 SERIES)	16	500015007
BALANCE PLATE (INCLUDES #19)	18	500012001
STEEL BALL (3)	19	500018048
ENDCOVER	20	500016001
SEAL CARRIER	24	505017001
SEAL CARRIER BOLT WASHER (9)	25	530018100
SEAL CARRIER BOLT (9)	26	157018110
1000 PSI RELIEF VALVE	NOT SHOWN	500018228
2000 PSI RELIEF VALVE	NOT SHOWN	500018231
3000 PSI RELIEF VALVE	NOT SHOWN	500018221
SLOTTED HEX NUT	NOT SHOWN	500449304
SOLID HEX NUT	NOT SHOWN	500449303
LOCK NUT	NOT SHOWN	300339303P

## ROTORS, DRIVE LINKS AND SPACERS, AND BOLTS

WHEN CHANGING MOTOR DISPLACEMENTS, A MATCHING ROTOR AND BOLT SET KIT MUST BE ORDERED. A NEW DRIVE LINK KIT MAY BE NECESSARY. DRIVE LINK SPACERS ARE INCLUDED IN DRIVE LINK KITS, BUT MAY ALSO BE ORDERED SEPERATELY BY USING THE DRIVE LINK SPACER KIT NUMBER.

EXPLODED VIEW ITEM #	17	17	15	21
DISPLACEMENT	STANDARD ROTOR KIT	FREETURN ROTOR KIT	DRIVE LINK KIT	BOLT SET KIT
120	500087005	500087008	500014009	500445006
160	500137005	500137011	500014009	500445006
200	500167004	500167011	500014040	500445012
230	500147002	500147004	500014041	500445014
260	500227000	500227004	500014039	500445014
300	500247005	500247011	500014007	500445018
350	500207000	500207004	500014042	500445026
375	500307005	500307011	500014008	500445024
470	500357003	500357005	500014042	500445026
540	500407005	500337056	500014044	500445032
620	500387036	500387056	500014048	500445038
750	500607005	500607011	500014047	500445045

## HOUSING KITS

(EXPLODED VIEW ITEM #11)

STANDARD HOUSING KITS INCLUDE ITEM NUMBERS 12, 13 & 14.

DESCRIPTION	HOUSING KIT	DESCRIPTION	HOUSING KIT
#A31 - 4-HOLE, MAGNETO MOUNT, 7/8-14 UNF	505013609	#A58 - 6-HOLE, SAE A MOUNT, G 1/2	505013616
#A31 - 4-HOLE, MAGNETO MOUNT, 7/8-14 UNF W/RELIEF	505013624	#W31 - 4-HOLE, WHEEL MOUNT, 7/8-14 UNF	505013607
#A38 - 4-HOLE, MAGNETO MOUNT, G 1/2	505013606	#W31 - 4-HOLE, WHEEL MOUNT, 7/8-14 UNF W/RELIEF	505013623
#A38 - 4-HOLE, MAGNETO MOUNT, G 1/2 W/RELIEF	505013621	#W38 - 4-HOLE, WHEEL MOUNT, G 1/2	505013603
#A51 - 6-HOLE, SAE A MOUNT, 7/8-14 UNF	505013614	#W38 - 4-HOLE, WHEEL MOUNT, G 1/2 W/RELIEF	505013620

## SHAFTS AND RELATED COMPONENTS KITS

SHAFT KITS COME WITH RELATED SHAFT COMPONENTS (i.e. keys, nuts, etc.)

TO ORDER INDIVIDUAL SHAFT COMPONENTS (i.e. keys, nuts, bolts, washers or wire rings) USE THE KIT NUMBER FOR EACH INDIVIDUAL PART

EXPLODED VIEW ITEM #	22	23	27	NOT SHOWN	NOT SHOWN	NOT SHOWN
DESCRIPTION	SHAFT KIT	KEY KIT	NUT KIT	BOLT KIT	WASHER KIT	WIRE RING KIT
#02 - 1" 6B SPLINE	500011600	---	---	---	---	---
#03 - 1" 6B SPLINE EXTENDED	500011602	---	---	---	---	---
#07 - 1-1/4" STRAIGHT EXT.	500011204	500449105	---	500449301	500449302	500449201
#08 - 32MM STRAIGHT EXT.	500011205	500449103	---	---	---	500449201
#09 - 14 TOOTH SPLINE EXT.	500011107	---	SEE MISC. KITS LIST ABOVE	---	---	---
#10 - 1" STRAIGHT	500011201	500449100	---	---	---	---
#12 - 25MM STRAIGHT	500011109	500449104	---	---	---	---
#15 - 1" STRAIGHT EXT.	500011206	500449100	---	---	---	---
#20 - 1-1/4" STRAIGHT	500011200	500449102	---	500449301	500449302	500449201
#21 - 32MM STRAIGHT	500011203	500449103	---	---	---	500449201
#22 - 1-1/4" TAPERED	500011300	500449101	---	---	---	---
#23 - 14 TOOTH SPLINE	500011101	---	---	---	---	500449201
#25 - 1-1/4" TAPERED EXT.	500011302	500449101	---	---	---	---