

ISO 9001:2008 by L.R.  
PED DIR. 97/23/EC by L.R.  
ATEX DIR. 94/9/EC by B.V.  
FIRE SAFE EXECUTION by L.R.  
ISO 15848 by TÜV  
ANTISTATIC DEVICE by L.R.  
FIRE SAFE TESTED ISO 10497 by L.R.

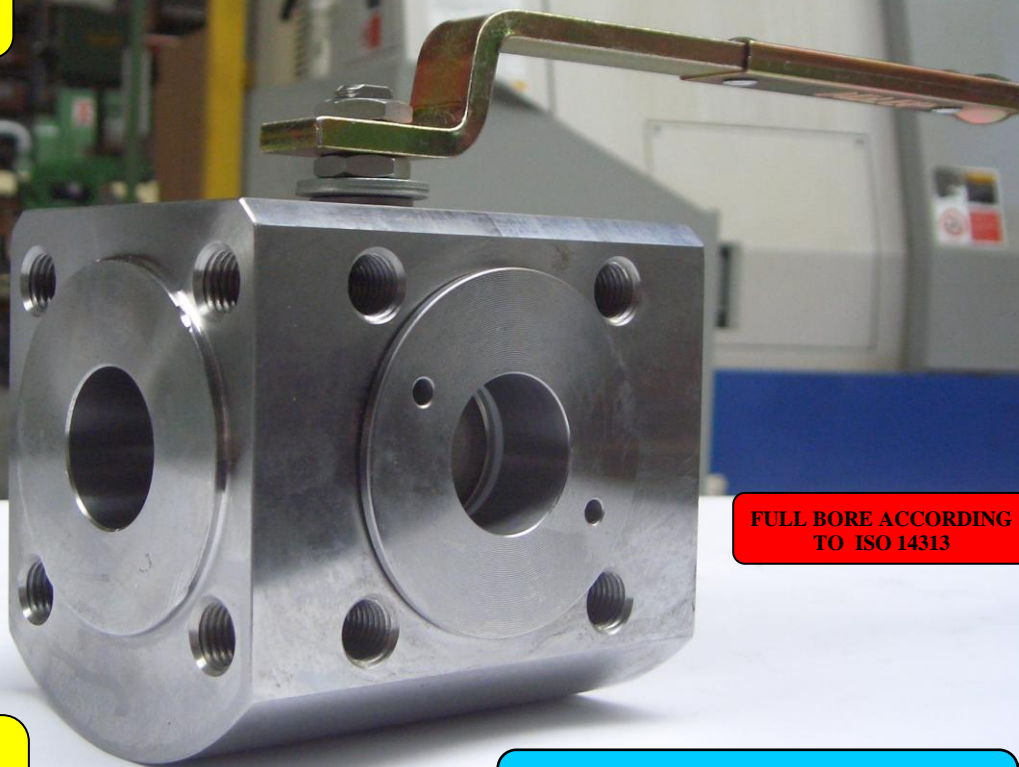
TYPE  
**VT5**  
PN 10 ÷ 40  
ANSI 150 ÷ 300\*

NORME E DIRETTIVE APPLICATE DISPONIBILI AL SEGUENTE LINK:  
STANDARD AND DIRECTIVE APPLIED AVAILABLE AT FOLLOWING LINK:  
[http://www.adlerspa.com/pdf/NORME\\_ADLER.pdf](http://www.adlerspa.com/pdf/NORME_ADLER.pdf)

## VALVOLE A SFERA "4 VIE" CON SFERA A X

ISO nbr° LRC 0160281 QMS issued by L.R.Q.A. PED nbr° COV 0212112/01 issued by L.R.V.  
ATEX nbr° 40.2003.4392 issued by B.V. ISO 15848 nbr° I-148466/1-/2 issued by TÜV

On request  
S.I.L. 3  
According to IEC 61508

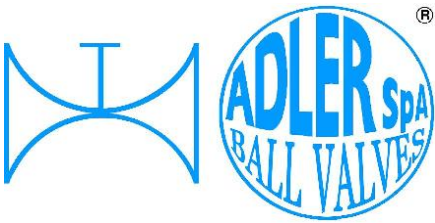


FULL BORE ACCORDING  
TO ISO 14313

On request  
FIRE SAFE  
According to ISO 10497  
"ISO-FT"

CONSTRUCTION ACCORDING TO:  
ANSI B16.34 - BS EN 12516-2

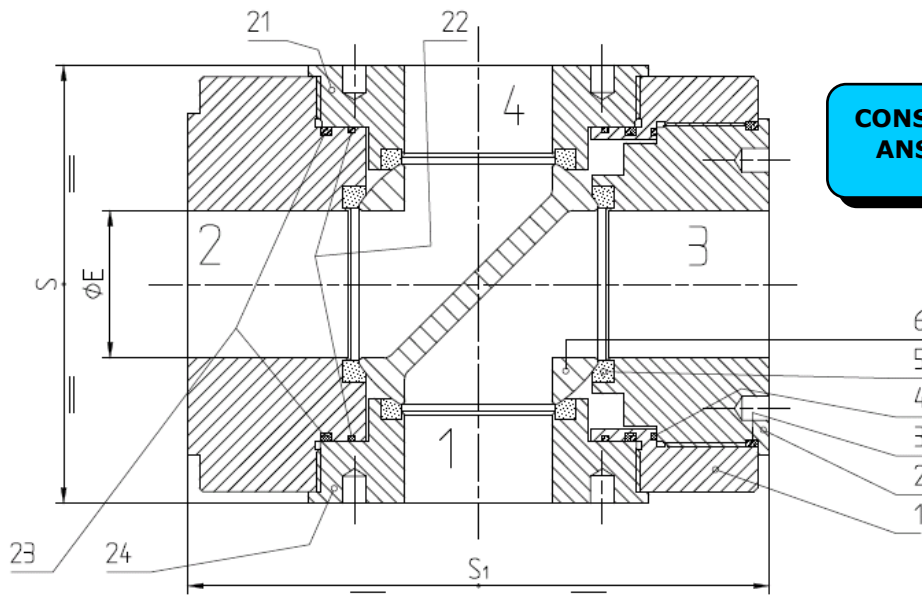
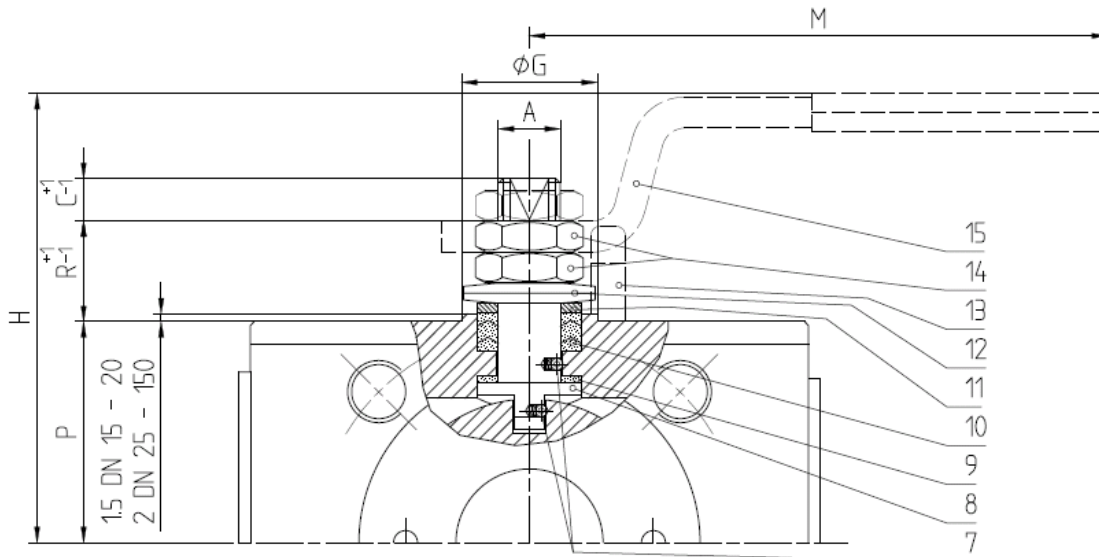
**BALL VALVES "4 WAY" WITH X-BALL  
ROBINETS A BOISSEAU SPHERIQUE  
"4 VOIES" AVEC BOULE A X  
KUGELHÄHNE "4 WEGE" MIT X-KUGEL**



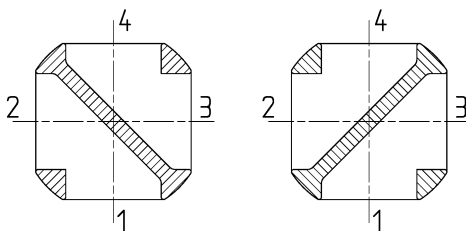
ISO 9001:2008 by L.R.  
 PED DIR. 97/23/EC by L.R.  
 ATEX DIR. 94/9/EC by B.V.  
 FIRE SAFE EXECUTION by L.R.  
 ISO 15848 by TÜV  
 ANTISTATIC DEVICE by L.R.  
 FIRE SAFE TESTED ISO 10497 by L.R.

TYPE  
**VT5**  
 PN 10 ÷ 40  
 ANSI 150 ÷ 300\*

**VALVOLA A SFERA "4 VIE" CON SFERA A X  
 BALL VALVES "4 WAY" WITH X-BALL  
 ROBINETS A BOISSEAU SPHERIQUE "4 VOIES" AVEC BOULE A X  
 KUGELHÄHNE "4 WEGE" MIT X-KUGEL**



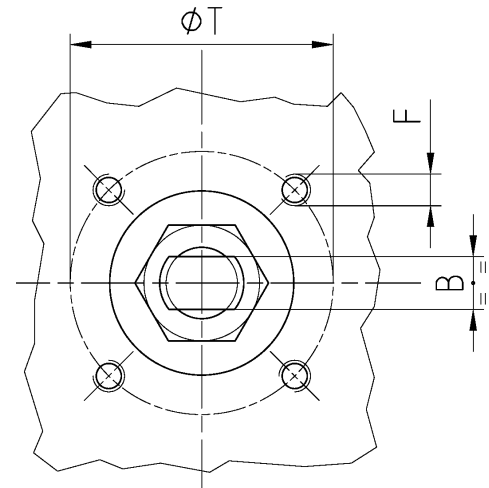
**CONSTRUCTION ACCORDING TO:  
 ANSI B16.34 - BS EN 12516-2**



POSIZIONI OTTENIBILI  
 OBTAINABLE POSITIONS  
 POSITIONS OBTENABLES  
 MÖGLICHE STELLUNGEN

• ACCOPPIAMENTO VALVOLA  
 ATTUATORE  
 • CONNECTION VALVE  
 ACTUATOR  
 • ACCOUPLEMENT ROBINET-  
 ACTIONNEUR  
 • ZUSAMMENBAU KUGELHAHN  
 ANTRIEB

**ISO-5211**



N.	DESCRIZIONE DESCRIPTION BESCHREIBUNG	MATERIALI MATERIALS MATERIAUX WERKSTOFFE
1	CORPO BODY CORPS KÖRPER	ASTM A105 ASTM A479 316/316L
2	GHIERA INSERT EMBOUT GEWINDEDRUCKRING	ASTM A105 ASTM A479 316/316L
3*	O-RING	FKM (VITON)
4*	ANELLO SEAL ANNEAU DICHTUNGSRING	P.T.F.E.
5*	SEDE SEAT SIEGE SITZRING	P.T.F.E. (BAM CERTIFIED) R.P.T.F.E. (OPTIONAL)
6	SFERA BALL BOULE KUGEL	ASTM A351 CF8 ASTM A351 CF8M
7	DISPOSITIVO ANTISTATICO ANTISTATIC DEVICE CONTACT ANTISTATIQUE ANTISTATIK VORRICHTUNG	ASTM A479 316/316L
8	STELO STEM TIGE SPINDEL	ASTM A479 304/304L ASTM A479 316/316L
9*	BUSSOLA STEM SEAL JOINT TIGE UNTERE SPINDELABDICHTUNG	P.T.F.E.
10*	PACCO A "V" CHEVRON RINGS JOINT A "V" 3 FACHE DACHMANSCHETTE	P.T.F.E. / GRAFITE P.T.F.E. / GRAPHITE P.T.F.E. / GRAPHITE P.T.F.E. / GRAPHIT

N.	DESCRIZIONE DESCRIPTION BESCHREIBUNG	MATERIALI MATERIALS MATERIAUX WERKSTOFFE
11	PREMIBUSSOLA PRESSING BUSH PRESSE RONDELLE STOPFBUCHSDRUCKRING	ASTM A479 304
12	MOLLE A TAZZA SPRING WASHERS RONDELLES BELLEVILLE TELLERFEDERN	C72/50Cr V4 X5CrNi17.7 or X12CrNi17.7 ZINCATO - GALVANIZED - ZINGUE - VERZINKT ON REQUEST
13	VITE DI FERMO E FERMO PIN AND STOP PIN PLOT ET PLOT D'ARRET ANSCHLAGBOLZEN	UNI 3740 8.8 UNI 3951 A2-70 ZINCATO - GALVANIZED - ZINGUE - VERZINKT ON REQUEST
14	DADO - CONTRODADO NUT - LOCK NUT ECROU - CONTRE-ECROU MUTTER - KONTERMUTTER	UNI 3740 - 6S ASTM A479 304 ZINCATO - GALVANIZED ZINGUE - VERZINKT ON REQUEST
15	LEVA WRENCH LEVIER HANDHEBEL	AISI 1010 ASTM A479 304 ZINCATO - GALVANIZED ZINGUE - VERZINKT ON REQUEST
21	GHIERA INSERT EMBOUT GEWINDEDRUCKRING	ASTM A105 ASTM A479 316/316L
22*	ANELLO SEAL ANNEAU DICHTUNGSRING	P.T.F.E.
23*	O-RING	FKM (VITON)
24	GHIERA INSERT EMBOUT GEWINDEDRUCKRING	ASTM A105 ASTM A479 316/316L

\* RICAMBI CONSIGLIATI - RECOMMENDED SPARE PARTS - PIECES DE RECHANGE CONSEILLEES - ERSATZTEIL EMPFEHLUNG

## DIMENSIONI - DIMENSION - DIMENSIONS - ABMESSUNGEN

DN	10	15	20	25	32	40	50	65	65	80	100	100	125	150	200
A		10	10	12	12	16	16	22	22	22	30	30			
B		6	6	8	8	10	10	14	14	14	18	18			
C		7	7	10	10	15	15	17	17	17	17	17			
ØE		15	19	25	30	38	51	64	64	69	87	87			
F		M5	M5	M5	M5	M6	M6	M8	M8	M8	M10	M10			
ISO		F03	F03	F03	F03	F05	F05	F07	F07	F07	F10	F10			
G		25	25	25	25	35	35	55	55	55	70	70			
H		70	75	90	95	112	122	147	147	149	174	174			
M		145	145	185	185	280	280	370	370	370	470	470			
P		36,6	41	46	51	57	67	85	85	87	99,5	107			
R		8	8	17	17	20	20	23	23	23	26	18			
S		64	80	83	105	113	124	140	162	174	192	210			
S <sub>1</sub>		97	108	115	140	150	165	185	206	216	230	262			
T		36	36	36	36	50	50	70	70	70	102	102			
~Kg	CARBON STEEL STAINLESS STEEL	4	6,5	7,5	12	15,5	18	25,5	35	54	69	90			
~Kg	STAINLESS STEEL	3,5	5,8	6,5	11	14	16	24							

- DATI E CARATTERISTICHE SOGGETTI A VARIAZIONI SENZA PREAVVISO
  - SPECIFICATIONS SUBJECT TO MODIFICATION WITHOUT PRIOR NOTICE
  - TOUS DROITS DE MODIFICATION RESERVES
  - KONSTRUKTIONSÄNDERUNGEN VORBEHALTEN
- ★ ANSI 300 ON REQUEST

PN 10 ÷ 16 - ANSI 150

PN 25 ÷ 40

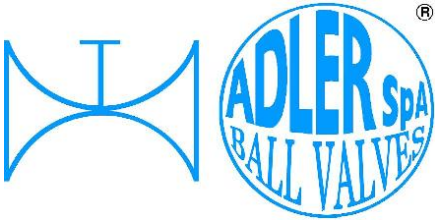
DN 100 ANSI 150 S=100,5 S<sub>1</sub>=240

EXECUTION 17

EXECUTION 18



ADLER SpA - BALL VALVES  
20010 S. STEFANO TICINO (MI) ITALY V.le BORLETTI, 14 Tel. +39/02974842.11 FAX +39/0297271698  
E-mail: [adler@adlerspa.com](mailto:adler@adlerspa.com) <http://www.adlerspa.com>



ISO 9001:2008 by L.R.  
 PED DIR. 97/23/EC by L.R.  
 ATEX DIR. 94/9/EC by B.V.  
 FIRE SAFE EXECUTION by L.R.  
 ISO 15848 by TÜV  
 ANTISTATIC DEVICE by L.R.  
 FIRE SAFE TESTED ISO 10497 by L.R.

TYPE  
**VT5**  
 PN 10 ÷ 40  
 ANSI 150 ÷ 300\*

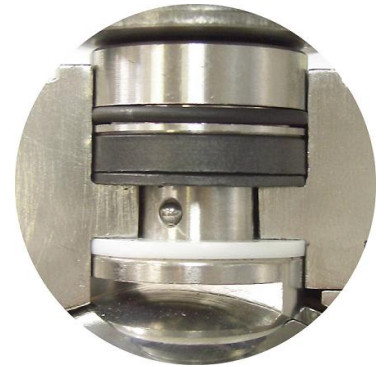
VALVOLE A SFERA "4 VIE" CON SFERA A X  
 BALL VALVES "4 WAY WAFER" WITH X BALL

ROBINETS A BOISSEAU SPHERIQUE "4 VOIES" AVEC BOULE A X  
 KUGELHÄHNE "4 WEGE" MIT X KUGEL

▪ ESECUZIONI ▪ EXECUTIONS ▪ EXECUTIONS ▪ BESCHREIBUNG



EXECUTION 4-12



EXECUTION 6 - 16

**S** STANDARD

**O** OPTIONAL

**1** **S**

-MONTAGGIO VITI – SCREW ASSEMBLING  
 -MONTAGE VIS – EINBAU MIT SCHRAUBEN

**2** **S** INDICATORE DI FLUSSO  
 FLOW INDICATOR

Linked Way

SEE OBTAINABLE POSITIONS  
 ON DATASHEET

**2** **S** INDICATORE DI FLUSSO  
 FLOW INDICATOR

Linked Way

SEE OBTAINABLE POSITIONS  
 ON DATASHEET

**4** **S**

-STELO ANTI ESPULSIONE – ANTI BLOW OUT STEM  
 -TIGE ANTIEXPULSION – AUSBLASGESICHERTE WELLE

-PACCO A "V" – CHEVRON RINGS  
 -JOINT A "V" – 3 FACHE DACHMANSCHETE  
 ANTISTATIC DEVICE – ANTISTATIK VORRICHTUNG  
 BS 5146

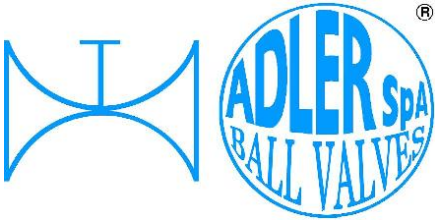
AQUILA – AEGLE - AIGLE  
 ADLER

**6** **O** BREVETTO – PATENTED  
 00219688

FKM (VITON)

-"O" RING STELO "O" RING ON STEM  
 -TIGE AVEC "O" RING  
 -"O" RING IM SPINDELBEREICH





ISO 9001:2008 by L.R.  
 PED DIR. 97/23/EC by L.R.  
 ATEX DIR. 94/9/EC by B.V.  
 FIRE SAFE EXECUTION by L.R.  
 ISO 15848 by TÜV  
 ANTISTATIC DEVICE by L.R.  
 FIRE SAFE TESTED ISO 10497 by L.R.

TYPE  
**VT5**  
 PN 10 ÷ 40  
 ANSI 150 ÷ 300\*

VALVOLE A SFERA "4 VIE" CON SFERA A X  
 BALL VALVES "4 WAY WAFER" WITH X BALL

ROBINETS A BOISSEAU SPHERIQUE "4 VOIES" AVEC BOULE A X  
 KUGELHÄHNE "4 WEGE" MIT X KUGEL

• ESECUZIONI • EXECUTIONS • EXECUTIONS • AUSFÜHRUNGEN

**7** **O**

-PROLUNGA STELO -STEM EXTENSION  
 -TIGE PROLONGEE -SPINDELVERLÄNGERUNG

**8** **O**

-PARTICOLARI INOX  
 -STAINLESS STEEL DETAILS  
 -ACCESSOIRES EN INOX  
 -EDELSTAHLTEILE

**9** **S**

-ATTACCO "ISO" -"ISO" CONNECTIONS  
 -SYSTEM "ISO" -ANSCHLUSS "ISO"

**10** **S**

-SFERA CONTENUTA -CONTENTS BALL  
 -BOULE CONTENUE  
 -NICHT RAUSRAGENDE KUGEL

DIMENSION CHECK

**12** **O**

FIRE SAFE  
 ISO 10497 "ISO-FT"  
 (BS 6755 / API 607)

**13** **S**

-DOPPIA TENUTA -DOUBLE SEALS  
 -DOUBLE ETANCHEITE -DOPPELTE ABDICHTUNG  
 -GHIERA A BATTUTA -METAL BEATING RING  
 -EMBOUT AVEC BATTUE MECANIQUE  
 -METALLISCHER ANSCHLAG DES  
 GEWINDEDRECKRINGS

**ADLER**

UNA GAMMA COMPLETA  
 PRIVILEGIANDO LA QUALITA'

A COMPLETE RANGE PRIVILEGING  
 THE QUALITY

**15** **O**

P.T.F.E./GRAPHITE  
 P.T.F.E.  
 100-250

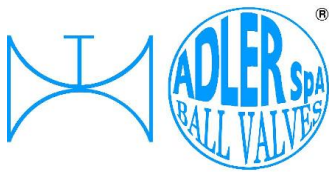
-SERVIZIO CRIOGENICO - CRYOGENIC SERVICE  
 -SERVICE CRYOGENIQUE  
 -TIEFTEMPERATUR SERVICE

**16** **O**

-FIRE SAFE ISO FT + "O" RING STELO  
 -FIRE SAFE ISO FT + "O" RING ON STEM  
 -SECURITE FEU ISO FT + TIGE AVEC "O" RING  
 -FEUERSICHERE AUSFÜHRUNG ISO FT +  
 "O" RING IM SPINDELBEREICH

**17** **S**

C.N.C. TOOLING



**VITI D'ASSEMBLAGGIO PER VT5  
ASSEMBLING SCREWS FOR VT5  
VIS D'ASSEMBLAGE POUR VT5  
MONTAGESCHRAUBEN FÜR VT5**

**TABLE  
08**

N° VITI – DIMENSIONE • N° SCREW – DIMENSIONS • N° VIS- DIMENSIONS • N° SCHRAUBEN-ABMESSUNGEN

**EUROPEAN NORM**

DN PN	15	20	25	32	40	50	65	80	100	125	150	200	250
10	16 M12 X30	16 M12 X30	16 M12 X30	16 M16 X35	16 M16 X35	16 M16 X40	16 M16 X40	32 M16 X40	32 M16 X40				
16	16 M12 X30	16 M12 X30	16 M12 X30	16 M16 X35	16 M16 X35	16 M16 X40	16 M16 X40	32 M16 X40	32 M16 X40				
25	16 M12 X30	16 M12 X35	16 M12 X35	16 M16 X40	16 M16 X40	16 M16 X40	32 M16 X45	32 M16 X45	32 M20 X50				
40	16 M12 X30	16 M12 X35	16 M12 X35	16 M16 X40	16 M16 X40	16 M16 X40	32 M16 X45	32 M16 X45	32 M20 X50				

\* N° 8 per UNI 2223/2229

**ANSI METRIC**

(STANDARD ADLER)

Ø Rating	1/2"	3/4"	1"	1 1/4"	1 1/2"	2"	2 1/2"	3"	4"	5"	6"	8"
150	16 M14 X30	16 M14 X30	16 M14 X30	16 M14 X45	16 M14 X35	16 M16 X40	16 M16 X40	16 M16 X45	32 M16 X45			
300	16 M14 X30	16 M16 X30	16 3/16 X35	16 M16 X40	16 M20 X45	32 M16 X40	32 M20 X50	32 M20 X50	32 M20 X55			

**ANSI B1.1 UNC**

(ON REQUEST)

Ø Rating	1/2"	3/4"	1"	1 1/4"	1 1/2"	2"	2 1/2"	3"	4"	5"	6"	8"
150	16 1/2 X 1 1/4	16 1/2 X 1 1/4	16 1/2 X 1 1/4	16 1/2 X 1 1/4	16 1/2 X 1 1/2	16 5/8 X 1 1/2	16 5/8 X 1 3/4	16 5/8 X 1 3/4	32 5/8 X 1 3/4			
300	16 1/2 X 1 1/4	16 5/8 X 1 1/4	16 5/8 X 1 1/2	16 5/8 X 1 1/2	16 3/4 X 1 3/4	16 5/8 X 1 3/4	32 3/4 X 2	32 3/4 X 2	32 3/4 X 2 1/4			



VT5/15 RIPRODUZIONE VIETATA - COPYRIGHT

Tab-08/12 RIPRODUZIONE VIETATA - COPYRIGHT



ADLER SpA – BALL VALVES  
20010 S. STEFANO TICINO (MI) ITALY V.le BORLETTI, 14 Tel. +39/02974842.11 FAX +39/0297271698  
E-mail: [adler@adlerspa.com](mailto:adler@adlerspa.com) <http://www.adlerspa.com>