

ISO 9001:2008 by L.R.
PED DIR. 97/23/EC by L.R.
ATEX DIR. 94/9/EC by B.V.
FIRE SAFE EXECUTION by L.R.
ISO 15848 by TÜV
ANTISTATIC DEVICE by L.R.
FIRE SAFE TESTED ISO 10497 by L.R.

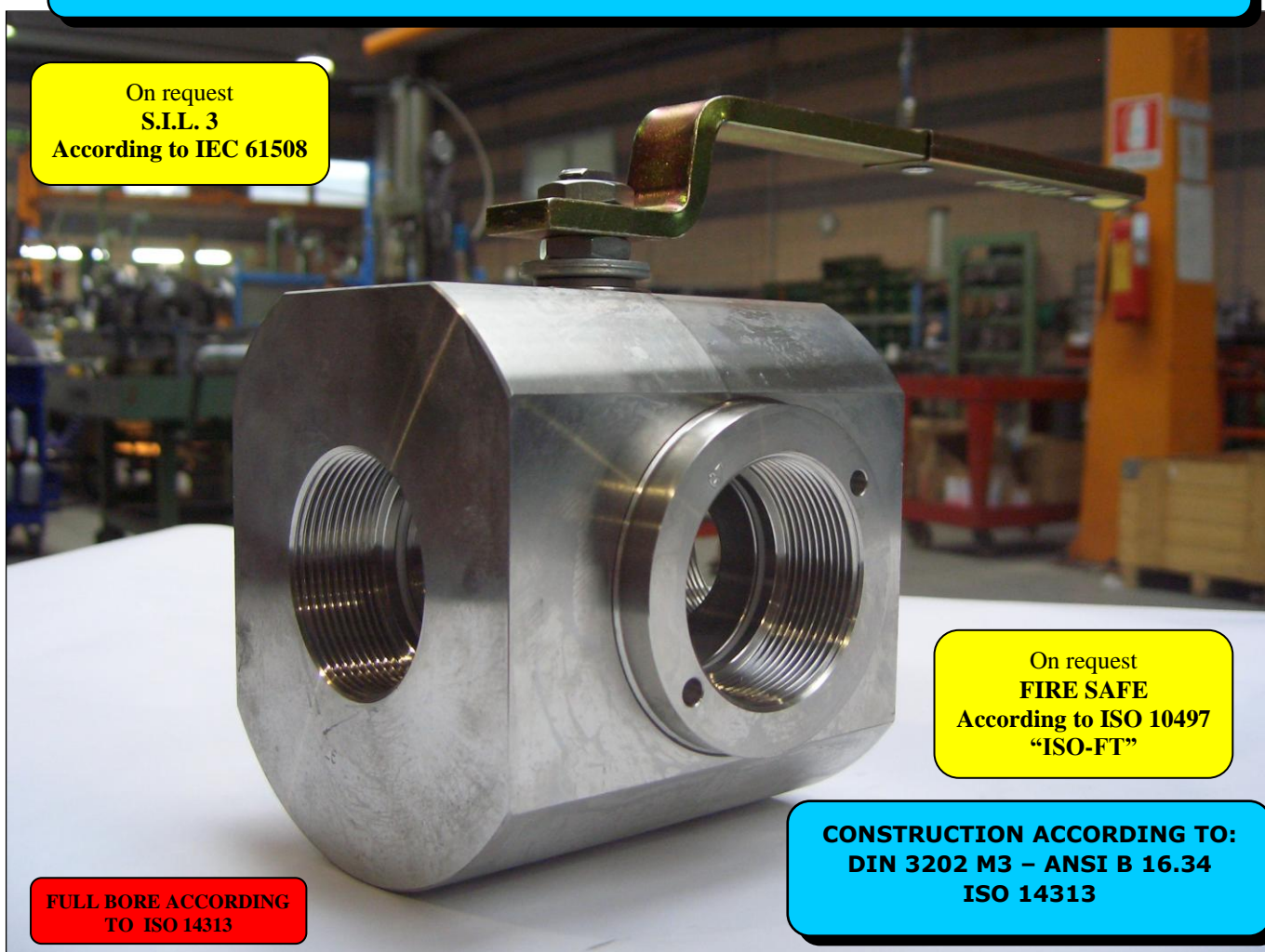
TYPE
FT6
PN 25 ÷ 63

NORME E DIRETTIVE APPLICATE DISPONIBILI AL SEGUENTE LINK:
STANDARD AND DIRECTIVE APPLIED AVAILABLE AT FOLLOWING LINK:
http://www.adlerspa.com/pdf/NORME_ADLER.pdf

VALVOLE A SFERA "3 VIE" PASSAGGIO TOTALE 90°

ISO nbr° LRC 0160281 QMS issued by L.R.Q.A. PED nbr° COV 0212112/01 issued by L.R.V.
ATEX nbr° 40.2003.4392 issued by B.V. ISO 15848 nbr° I-148466/1-/2 issued by TÜV

On request
S.I.L. 3
According to IEC 61508



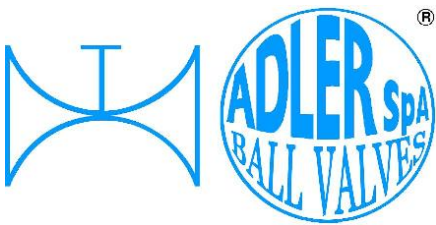
On request
FIRE SAFE
According to ISO 10497
"ISO-FT"

CONSTRUCTION ACCORDING TO:
DIN 3202 M3 - ANSI B 16.34
ISO 14313

FULL BORE ACCORDING
TO ISO 14313

BALL VALVES "3 WAY" FULL BORE 90°
ROBINETS A BOISSEAU SPHERIQUE
"3 VOIES" PASSAGE INTEGRAL 90°
KUGELHÄHNE "3 WEGE"
VOLLER DURCHGANG 90°

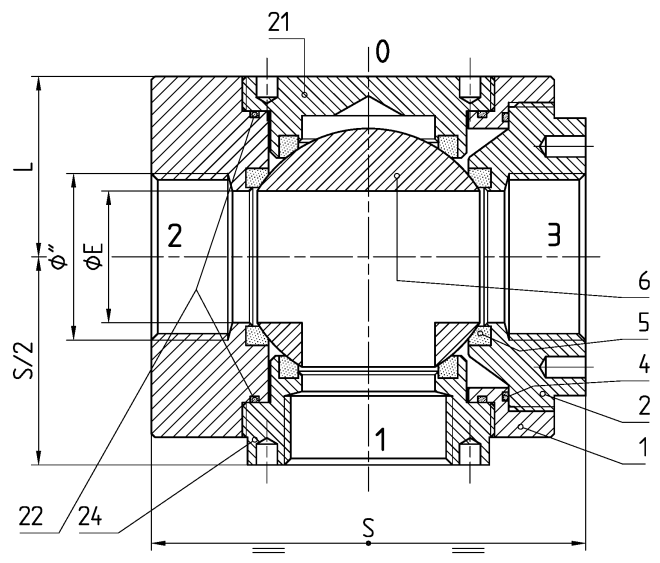
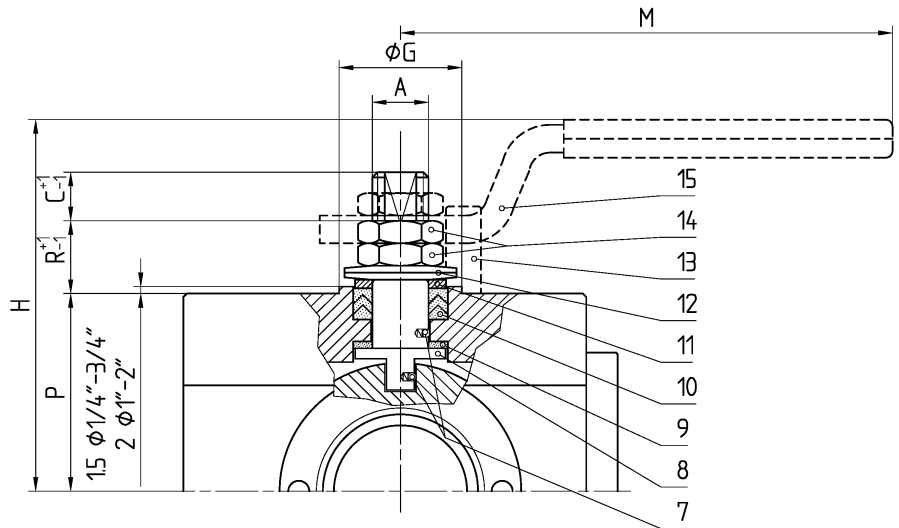
WEB SITE: WWW.ADLERSPA.COM



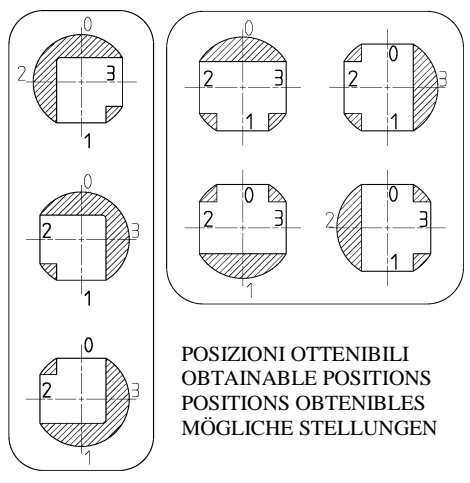
ISO 9001:2008 by L.R.
 PED DIR. 97/23/EC by L.R.
 ATEX DIR. 94/9/EC by B.V.
 FIRE SAFE EXECUTION by L.R.
 ISO 15848 by TÜV
 ANTISTATIC DEVICE by L.R.
 FIRE SAFE TESTED ISO 10497 by L.R.

TYPE
FT6
 PN 25 ÷ 63

VALVOLA A SFERA "3 VIE" PASSAGGIO TOTALE 90°
BALL VALVES "3 WAY" FULL BORE 90°
ROBINETS A BOISSEAU SPHERIQUE "3 VOIES" PASSAGE INTEGRAL 90°
KUGELHÄHNE "3 WEGE" VOLLER DURCHGANG 90°

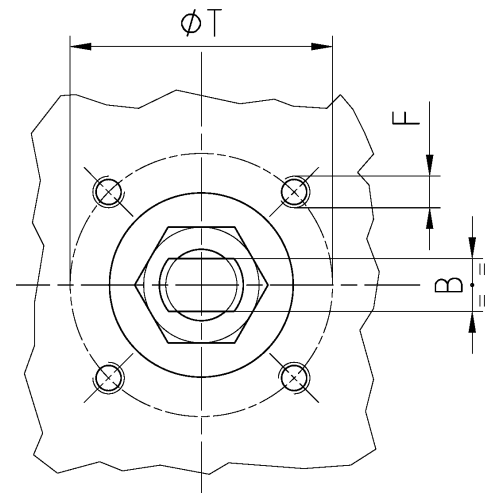


CONSTRUCTION ACCORDING TO:
DIN 3202 M3 - ANSI B16.34
ISO 14313



POSIZIONI OTTENIBILI
 OBTAINABLE POSITIONS
 POSITIONS OBTENIBLES
 MÖGLICHE STELLUNGEN

• ACCOPPIAMENTO VALVOLA
 ATTUATORE
 • CONNECTION VALVE
 ACTUATOR
 • ACCOUPLEMENT ROBINET-
 ACTIONNEUR
 • ZUSAMMENBAU KUGELHAHN
 ANTRIEB
ISO-5211



N.	DESCRIZIONE DESCRIPTION BESCHREIBUNG	MATERIALI MATERIALS MATERIAUX WERKSTOFFE
1	CORPO BODY CORPS KÖRPER	ASTM A105 ASTM A479 316/316L
2	GHIERA INSERT EMBOUT GEWINDEDRUCKRING	ASTM A105 ASTM A479 316/316L
4*	ANELLO SEAL ANNEAU DICHTUNGSRING	P.T.F.E.
5*	SEDE SEAT SIEGE SITZRING	P.T.F.E. (BAM CERTIFIED) R.P.T.F.E. (OPTIONAL)
6	SFERA BALL BOULE KUGEL	ASTM A479 304/304L ASTM A351 CF8 ASTM A479 316/316L ASTM A351 CF8M
7	DISPOSITIVO ANTISTATICO ANTISTATIC DEVICE CONTACT ANTISTATIQUE ANTISTATIK VORRICHTUNG	ASTM A479 316/316L
8	STELO STEM TIGE SPINDEL	ASTM A479 304/304L ASTM A479 316/316L
9*	BUSSOLA STEM SEAL JOINT TIGE UNTERE SPINDELABDICHTUNG	P.T.F.E.
10*	PACCO A "V" CHEVRON RINGS JOINT A "V" 3 FACHE DACHMANSCHETTE	P.T.F.E. / GRAFITE P.T.F.E. / GRAPHITE P.T.F.E. / GRAPHITE P.T.F.E. / GRAPHIT

N.	DESCRIZIONE DESCRIPTION BESCHREIBUNG	MATERIALI MATERIALS MATERIAUX WERKSTOFFE
11	PREMIBUSSOLA PRESSING BUSH PRESSE RONDELLE STOPFBUCHSDRUCKRING	ASTM A479 304
12	MOLLE A TAZZA SPRING WASHERS RONDELLES BELLEVILLE TELLERFEDERN	C72/50Cr V ₄ X5CrNi17.7 or X12CrNi17.7 ZINCATO - GALVANIZED - ZINGUE - VERZINKT ON REQUEST
13	VITE DI FERMO E FERMO PIN AND STOP PIN PLOT ET PLOT D'ARRET ANSCHLAGBOLZEN	UNI 3740 8.8 UNI 3951 A2-70 ZINCATO - GALVANIZED - ZINGUE - VERZINKT ON REQUEST
14	DADO - CONTRODADO NUT - LOCK NUT ECROU - CONTRE-ECROU MUTTER - KONTERMUTTER	UNI 3740 - 6S ASTM A479 304 ZINCATO - GALVANIZED - ZINGUE - VERZINKT ON REQUEST
15	LEVA WRENCH LEVIER HANDHEBEL	AISI 1010 ASTM A479 304 ZINCATO - GALVANIZED - ZINGUE - VERZINKT ON REQUEST
21	GHIERA INSERT EMBOUT GEWINDEDRUCKRING	ASTM A105 ASTM A479 316/316L
22*	ANELLO SEAL ANNEAU DICHTUNGSRING	P.T.F.E.
24	GHIERA INSERT EMBOUT GEWINDEDRUCKRING	ASTM A105 ASTM A479 316/316L

* RICAMBI CONSIGLIATI - RECOMMENDED SPARE PARTS - PIECES DE RECHANGE CONSEILLEES - ERSATZTEIL EMPFEHLUNG

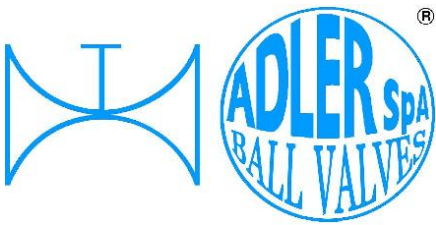
DIMENSIONI - DIMENSION - DIMENSIONS - ABMESSUNGEN

Ø"	1/4"	3/8"	1/2"	3/4"	1"	1 1/4"	1 1/2"	2"	2 1/2"	3"	4"	5"	6"	8"
A	8	8	10	10	12	12	16	16						
B	5	5	6	6	8	8	10	12						
C	6	6	7	7	10	10	15	15						
ØE	10	10	15	19	25	30	38	51						
F	M5	M5	M5	M5	M5	M5	M6	M6						
ISO	F03	F03	F03	F03	F03	F03	F05	F05						
G	25	25	25	25	25	25	35	35						
H	50	50	70	74	90	97	113	123						
L	24,5	24,5	30	32,5	39	43,5	51,5	60,5						
M	120	120	145	145	185	185	280	280						
P	21,5	21,5	30	34,5	46	51	57	67						
R	12	12	14	14	17	17	20	20						
S	60	60	75	80	90	110	120	140						
T	36	36	36	36	36	36	50	50						
PN	63	63	63	40	40	40	25	25						
~Kg	1,5	1,5	2,3	3,1	4,4	6,2	9,5	15						

- DATI E CARATTERISTICHE SOGGETTI A VARIAZIONI SENZA PREAVVISO
- SPECIFICATIONS SUBJECT TO MODIFICATION WITHOUT PRIOR NOTICE
- TOUS DROITS DE MODIFICATION RESERVES
- KONSTRUKTIONSÄNDERUNGEN VORBEHALTEN

Ø 1/4"÷3/8" SEAT IN R.P.T.F.E.





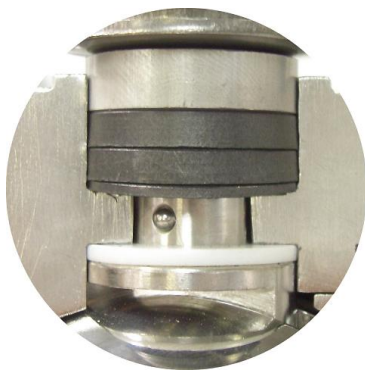
ISO 9001:2008 by L.R.
 PED DIR. 97/23/EC by L.R.
 ATEX DIR. 94/9/EC by B.V.
 FIRE SAFE EXECUTION by L.R.
 ISO 15848 by TÜV
 ANTISTATIC DEVICE by L.R.
 FIRE SAFE TESTED ISO 10497 by L.R.

TYPE
FT6
 PN 25 ÷ 63

VALVOLE A SFERA "3 VIE" PASSAGGIO TOTALE 90°
 BALL VALVES "3 VIE" FULL BORE 90°

ROBINETS A BOISSEAU SPHERIQUE "3 VOIES" PASSAGE INTEGRAL 90°
 KUGELHÄHNE "3 WEGE" VOLLER DURCHGANG 90°

• ESECUZIONI • EXECUTIONS • EXECUTIONS • AUSFÜHRUNGEN



EXECUTION 4 -12



EXECUTION 6 - 16

S STANDARD

O OPTIONAL

1 **S**

SEE TABLE 23
 FOR TYPE
 OF THREAD

2 **S** INDICATORE DI FLUSSO
 FLOW INDICATOR

S ONLY FOR VALVES ≥ DN 50

FORO DI BILANCIAMENTO
 BALANCING HOLE
 TROU DE BALANCEMENT
 DRUCKENTLASTUNGSBOHRUNG

ON REQUEST AVAILABLE ON DN ≤ 40

4 **S**

-STELO ANTI ESPULSIONE -ANTI BLOW OUT STEM
 -TIGE ANTIEXPULSION -AUSBLASGESICHERTE WELLE

-PACCO A "V" -CHEVRON RINGS
 -JOINT A "V" -3 FACHE DACHMANSCHETE
 ANTISTATIC DEVICE ANTISTATIK VORRICHTUNG
 BS 5146

5 **O**

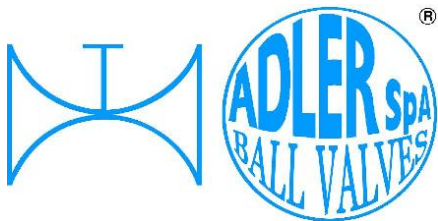
103 (1/4" - 3/4")
 145 (1" - 1 1/4")
 69 (1/4" - 3/4")
 79 (1" - 1 1/4")
 57

-MANIGLIA OVALE - OVAL HANDLE
 -LEVIER OVAL -HANDHEBEL IN OVALFORM

6 **O** BREVETTO - PATENTED
 00219688

FKM (VITON)
 Ø 1/2" ÷ 2"

-"O" RING STELO "O" RING ON STEM
 -TIGE AVEC "O" RING
 -"O" RING IM SPINDELBEREICH



ISO 9001:2008 by L.R.
 PED DIR. 97/23/EC by L.R.
 ATEX DIR. 94/9/EC by B.V.
 FIRE SAFE EXECUTION by L.R.
 ISO 15848 by TÜV
 ANTISTATIC DEVICE by L.R.
 FIRE SAFE TESTED ISO 10497 by L.R.

TYPE
FT6
 PN 25 ÷ 63

VALVOLE A SFERA "3 VIE" PASSAGGIO TOTALE 90°
 BALL VALVES "3 VIE" FULL BORE 90°

ROBINETS A BOISSEAU SPHERIQUE "3 VOIES" PASSAGE INTEGRAL 90°
 KUGELHÄHNE "3 WEGE" VOLLER DURCHGANG 90°

• ESECUZIONI • EXECUTIONS • EXECUTIONS • BESCHREIBUNG

7 **O**

-PROLUNGA STELO -STEM EXTENSION
 -TIGE PROLONGEE -SPINDELVERLÄNGERUNG

8 **O**

-PARTICOLARI INOX -STAINLESS STEEL DETAILS
 -ACCESSOIRES EN INOX -EDELSTAHLTEILE

9 **S**

-ATTACCO "ISO" -"ISO" CONNECTIONS
 -SYSTEM "ISO" -ANSCHLSS "ISO"

10 **S**

-SFERA CONTENUTA -CONTENTS BALL
 -BOULE CONTENUE -NICHT RAUSRAGENDE KUGEL

**AQUILA - EAGLE - AIGLE
 ADLER**

12 **O**

**FIRE SAFE
 ISO 10497 "ISO-FT"
 (BS 6755 / API 607)**

13 **S**

-ANELLO CONTENUTO -CONTAINED SEAL
 -ANNEAU CONTENU -DICHRING GEKAMMERT
 -GHIERA A BATTUTA -METAL BEATING RING
 -EMBOUT AVEC BATTUE MECANIQUE
 -METALLISCHER ANSCHLAG DES
 GEWINDEDRUCKRINGS

14 **O**

-FORO DI SCARICO NELLA SFERA
 -OVERPRESSURE HOLE INTO BALL
 -TROUGH DECOMPRESSION DANS LA BOULE
 -ENTLASTUNGSBOHRUNG IN DER KUGEL

15 **O**

-SERVIZIO CRIOGENICO - CRYOGENIC SERVICE
 -SERVICE CRYOGÉNIQUE
 -TIEFTEMPERATUR SERVICE

CERTIFY ISO 9001:2008

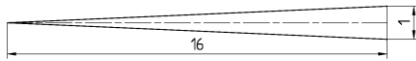
S

ADLER

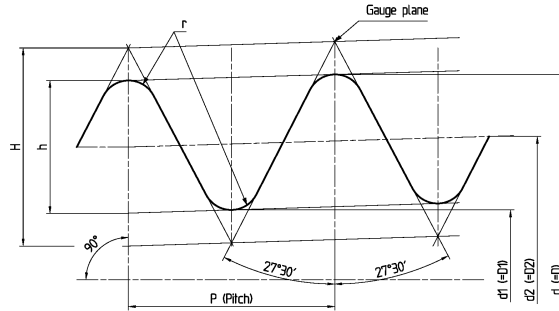
UNA GAMMA COMPLETA
 PRIVILEGIANDO LA QUALITA'

A COMPLETE RANGE PRIVILEGING
 THE QUALITY

**IN ACCORDANCE TO
ISO 7-1 – 1994**

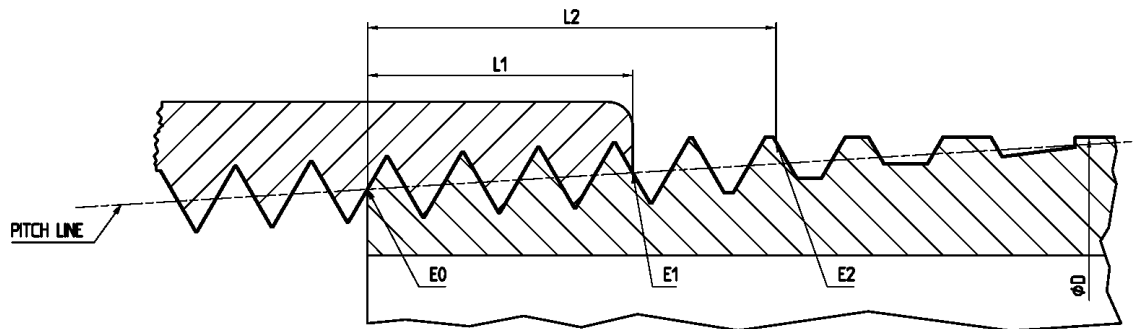


H= 0.960 237 P
h= 0.640 327 P
r= 0.137 278 P



1 Designation of thread size	2 Number of threads in 25.4 mm	3 Pitch P	4 Height of thread h	5 Diameters of gauges plane			6 Gauges length (external threads)					7 Tolerance on position of gauge plan on internal thread		8 Length of useful external thread not less than			9 Fitting allowance		20 Diameter tolerance on parallel internal threads
				Major d	Pitch d ₂	Minor d ₁	Nominal	Tolerance ±t ₁ /2		Max.	Min.	Tolerance ±t ₂ /2		For nominal gauge length	For maximum gauge length	For minimum gauge length	2)	Turns of thread	
								2)	Turns of thread			2)	Turns of thread						
¼	19	1,337	0,856	13,15	12,30	11,44	6	1,3	1	7,3	4,7	1,7	1 ¼	9,7	11	8,4	3,7	2 ¾	±0,104
3/8	19	1,337	0,856	16,66	15,80	14,95	6,4	1,3	1	7,7	5,1	1,7	1 ¼	10,1	11,4	8,8	3,7	2 ¾	±0,104
½	14	1,814	1,162	20,95	19,79	18,63	8,2	1,8	1	10	6,4	2,3	1 ¼	13,2	15	11,4	5	2 ¾	±0,142
¾	14	1,814	1,162	26,44	25,27	24,11	9,5	1,8	1	11,3	7,7	2,3	1 ¼	14,5	16,3	12,7	5	2 ¾	±0,142
1	11	2,309	1,479	33,24	31,77	30,29	10,4	2,3	1	12,7	8,1	2,9	1 ¼	16,8	19,1	14,5	6,4	2 ¾	±0,180
1 ¼	11	2,309	1,479	41,91	40,43	38,95	12,7	2,3	1	15	10,4	2,9	1 ¼	19,1	21,4	16,8	6,4	2 ¾	±0,180
1 ½	11	2,309	1,479	47,80	46,32	44,84	12,7	2,3	1	15	10,4	2,9	1 ¼	19,1	21,4	16,8	6,4	2 ¾	±0,180
2	11	2,309	1,479	59,61	58,13	56,65	15,9	2,3	1	18,2	13,6	2,9	1 ¼	23,4	25,7	21,1	7,5	3 ¼	±0,180

**IN ACCORDANCE TO
ANSI B1.20.1 – 1983**



1 Nominal Pipe Size	2 O.D. of Pipe (D)	3 Threads/inch (n)	4 Pitch of threads (P)	5 Pitch diam. at beginning of external thread (E ₀)	6 Handtight engagement			7 Effective thread, external		
					Length ² (L ₁)		Diam. ³ (E ₁)	Length ⁴ (L ₂)		Diam. ⁵ (E ₂)
					inch	threads		inch	threads	
¼	0,540	18	0,05556	0,47739	0,2278	4,1	0,49163	0,4018	723	0,50250
3/8	0,675	18	0,05556	0,61201	0,240	4,32	0,32701	0,4078	734	0,63750
½	0,840	14	0,07143	0,75843	0,320	4,48	0,77843	0,5337	747	0,79179
¾	1,050	14	0,07143	0,96768	0,339	4,75	0,98887	0,5457	764	1,00179
1	1,315	11,5	0,0896	1,21363	0,400	4,6	1,23863	0,6828	785	1,25630
1 ¼	1,660	11,5	0,0896	1,55713	0,420	4,83	1,58338	0,7068	813	1,60130
1 ½	1,900	11,5	0,0896	1,79609	0,420	4,83	1,82237	0,7235	832	1,84130
2	2,375	11,5	0,0896	2,26902	0,436	5,01	2,29627	0,7565	870	2,31630