

ISO 9001:2008 by L.R.  
PED DIR. 97/23/EC by L.R.  
ATEX DIR. 94/9/EC by B.V.  
FIRE SAFE EXECUTION by L.R.  
ISO 15848 by TÜV  
ANTISTATIC DEVICE by L.R.  
FIRE SAFE TESTED ISO 10497 by L.R.

TYPE  
**RT7**  
PN 25 ÷ 63

NORME E DIRETTIVE APPLICATE DISPONIBILI AL SEGUENTE LINK:  
STANDARD AND DIRECTIVE APPLIED AVAILABLE AT FOLLOWING LINK:  
[http://www.adlerspa.com/pdf/NORME\\_ADLER.pdf](http://www.adlerspa.com/pdf/NORME_ADLER.pdf)

## VALVOLE A SFERA "4 VIE" CON SFERA A X

ISO nbr° LRC 0160281 QMS issued by L.R.Q.A. PED nbr° COV 0212112/01 issued by L.R.V.  
ATEX nbr° 40.2003.4392 issued by B.V. ISO 15848 nbr° I-148466/1-/2 issued by TÜV

On request  
S.I.L. 3  
According to IEC 61508

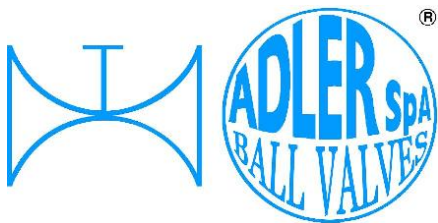
FULL BORE ACCORDING  
TO ISO 14313

On request  
FIRE SAFE  
According to ISO 10497  
"ISO-FT"

CONSTRUCTION ACCORDING TO:  
DIN 3202 M3 – ANSI B 16.34  
ISO 14313

**BALL VALVES "4 WAY" WITH X BALL**  
**ROBINETS A BOISSEAU SPHERIQUE**  
**"4 VOIES" AVEC BOULE A X**  
**KUGELHÄHNE "4 WEGE" MIT X KUGEL**

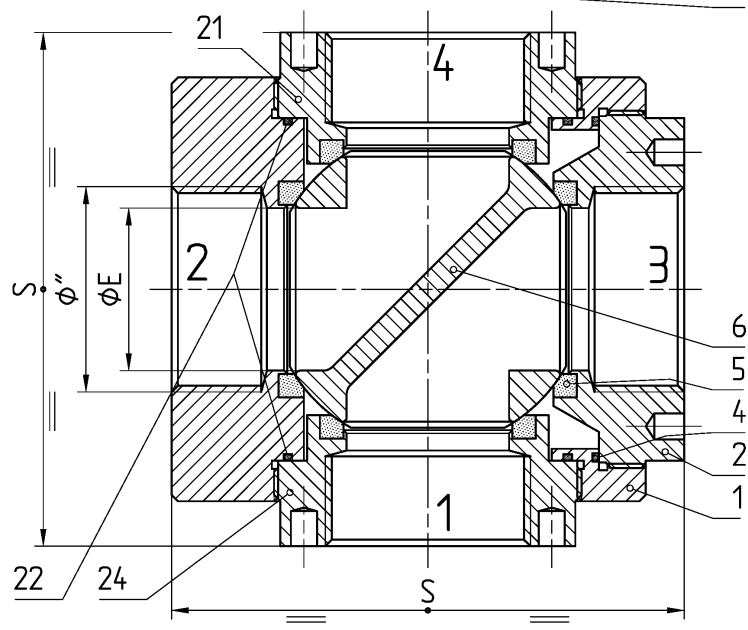
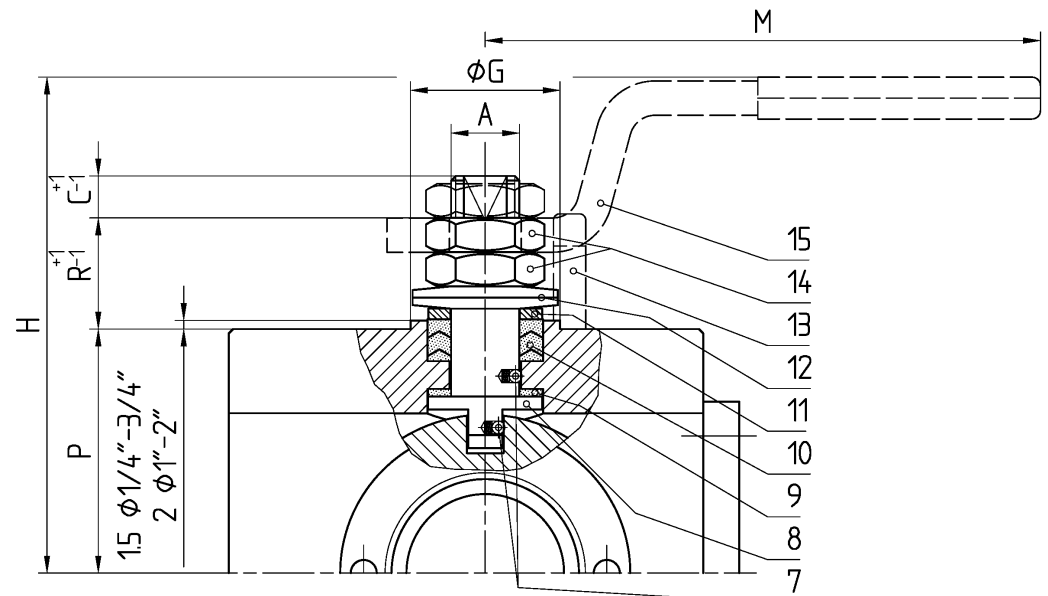
WEB SITE: [WWW.ADLERSPA.COM](http://WWW.ADLERSPA.COM)



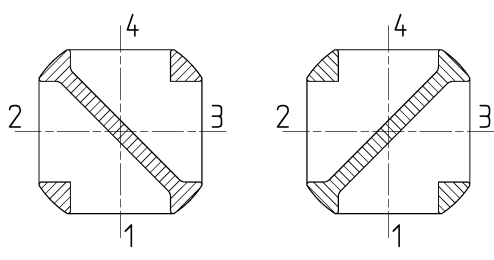
ISO 9001:2008 by L.R.  
 PED DIR. 97/23/EC by L.R.  
 ATEX DIR. 94/9/EC by B.V.  
 FIRE SAFE EXECUTION by L.R.  
 ISO 15848 by TÜV  
 ANTISTATIC DEVICE by L.R.  
 FIRE SAFE TESTED ISO 10497 by L.R.

TYPE  
**RT7**  
 PN 25 ÷ 63

**VALVOLA A SFERA "4 VIE" CON SFERA A X**  
**BALL VALVES "4 WAY" WITH X-BALL**  
**ROBINETS A BOULE "4 VOIES" AVEC BOULE A X**  
**KUGELHÄHNE "4 WEGE" MIT X-KUGEL**

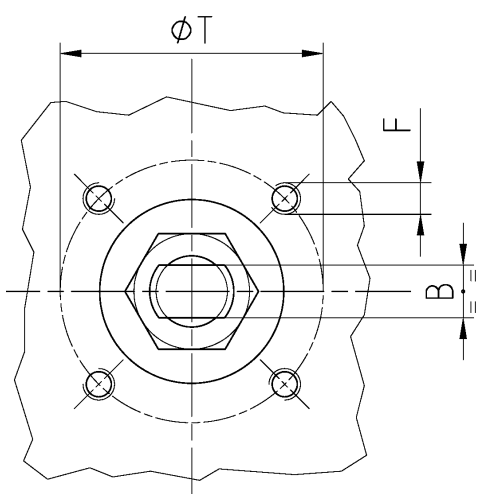


**CONSTRUCTION ACCORDING TO:**  
**DIN 3202 M3 - ANSI B16.34**  
**ISO 14313**



POSIZIONI OTTENIBILI  
 OBTAINABLE POSITIONS  
 POSITIONS OBTENABLES  
 MÖGLICHE STELLUNGEN

• ACCOPPIAMENTO VALVOLA  
 ATTUATORE  
 • CONNECTION VALVE  
 ACTUATOR  
 • ACCOUPLEMENT ROBINET-  
 ACTIONNEUR  
 • ZUSAMMENBAU KUGELHAHN  
 ANTRIEB  
**ISO-5211**



N.	DESCRIZIONE DESCRIPTION DESCRIPTION BESCHREIBUNG	MATERIALI MATERIALS MATERIAUX WERKSTOFFE
1	CORPO BODY CORPS KÖRPER	ASTM A105 ASTM A479 316/316L
2	GHIERA INSERT EMBOUT GEWINDEDRUCKRING	ASTM A105 ASTM A479 316/316L
3*	O-RING	FKM (VITON)
4*	ANELLO SEAL ANNEAU DICHTUNGSRING	P.T.F.E.
5*	SEDE SEAT SIEGE SITZRING	P.T.F.E. (BAM CERTIFIED) R.P.T.F.E. (OPTIONAL)
6	SFERA BALL BOULE KUGEL	ASTM A351 CF8 ASTM A351 CF8M
7	DISPOSITIVO ANTISTATICO ANTISTATIC DEVICE CONTACT ANTISTATIQUE ANTISTATIK VORRICHTUNG	ASTM A479 316/316L
8	STELO STEM TIGE SPINDEL	ASTM A479 304/304L ASTM A479 316/316L
9*	BUSSOLA STEM SEAL JOINT TIGE UNTERE SPINDELABDICHTUNG	P.T.F.E.
10*	PACCO A "V" CHEVRON RINGS JOINT A "V" 3 FACHE DACHMANSCHETTE	P.T.F.E. / GRAFITE P.T.F.E. / GRAPHITE P.T.F.E. / GRAPHITE P.T.F.E. / GRAPHIT

N.	DESCRIZIONE DESCRIPTION DESCRIPTION BESCHREIBUNG	MATERIALI MATERIALS MATERIAUX WERKSTOFFE
11	PREMIBUSSOLA PRESSING BUSH PRESSE RONDELLE STOPFBUCHSDRUCKRING	ASTM A479 304
12	MOLLE A TAZZA SPRING WASHERS RONDELLES BELLEVILLE TELLERFEDERN	C72/50Cr V4 X5CrNi17.7 or X12CrNi17.7 ZINCATO - GALVANIZED ZINGUE - VERZINKT ON REQUEST
13	VITE DI FERMO E FERMO PIN AND STOP PIN PLOT ET PLOT D'ARRET ANSCHLAGBOLZEN	UNI 3740 8.8 UNI 3951 A2-70 ZINCATO - GALVANIZED ZINGUE - VERZINKT ON REQUEST
14	DADO - CONTRODADO NUT - LOCK NUT ECROU - CONTRE-ECROU MUTTER - KONTERMUTTER	UNI 3740 - 6S ASTM A479 304 ZINCATO - GALVANIZED ZINGUE - VERZINKT ON REQUEST
15	LEVA WRENCH LEVIER HANDHEBEL	AISI 1010 ASTM A479 304 ZINCATO - GALVANIZED ZINGUE - VERZINKT ON REQUEST
21	GHIERA INSERT EMBOUT GEWINDEDRUCKRING	ASTM A105 ASTM A479 316/316L
22*	ANELLO SEAL ANNEAU DICHTUNGSRING	P.T.F.E.
23*	O-RING	FKM (VITON)
24	GHIERA INSERT EMBOUT GEWINDEDRUCKRING	ASTM A105 ASTM A479 316/316L

\* RICAMBI CONSIGLIATI - RECOMMENDED SPARE PARTS - PIECES DE RECHANGE CONSEILLEES - ERSATZTEIL EMPFEHLUNG

## DIMENSIONI - DIMENSION - DIMENSIONS - ABMESSUNGEN

Ø"	1/4"	3/8"	1/2"	3/4"	1"	1 1/4"	1 1/2"	2"	2 1/2"	3"	4"	5"	6"	8"
<b>A</b>	8	8	10	10	12	12	16	16						
<b>B</b>	5	5	6	6	8	8	10	12						
<b>C</b>	6	6	7	7	10	10	15	15						
<b>ØE</b>	10	10	15	19	25	30	38	51						
<b>F</b>	M5	M5	M5	M5	M5	M5	M6	M6						
<b>ISO</b>	F03	F03	F03	F03	F03	F03	F05	F05						
<b>G</b>	25	25	25	25	25	25	35	35						
<b>H</b>	50	50	70	74	90	97	113	123						
<b>M</b>	120	120	145	145	185	185	280	280						
<b>P</b>	21,5	21,5	30	34,5	46	51	57	67						
<b>R</b>	12	12	14	14	17	17	20	20						
<b>S</b>	60	60	75	80	90	110	120	140						
<b>T</b>	36	36	36	36	36	36	50	50						
<b>PN</b>	63	63	63	40	40	40	25	25						
<b>~Kg</b>	1,5	1,5	2,3	3,1	4,4	6,2	9,5	15	CARBON STEEL - STAINLESS STEEL					
<b>~Kg</b>			2		4		8,8		STAINLESS STEEL					

- DATI E CARATTERISTICHE SOGGETTI A VARIAZIONI SENZA PREAVVISO
- SPECIFICATIONS SUBJECT TO MODIFICATION WITHOUT PRIOR NOTICE
- TOUS DROITS DE MODIFICATION RESERVES
- KONSTRUKTIONSÄNDERUNGEN VORBEHALTEN

EXECUTION 17

EXECUTION 18

Ø 1/4" ÷ 3/8" SEAT IN R.P.T.F.E.



ADLER SpA - BALL VALVES  
20010 S. STEFANO TICINO (MI) ITALY V.le BORLETTI, 14 Tel. +39/02974842.11 FAX +39/0297271698  
E-mail: [adler@adlerspa.com](mailto:adler@adlerspa.com) <http://www.adlerspa.com>



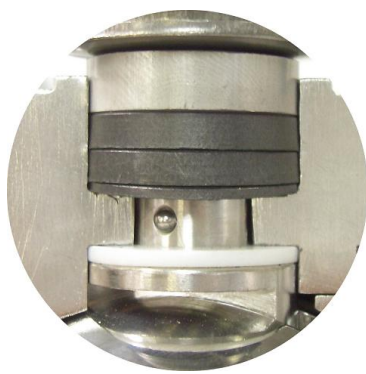
ISO 9001:2008 by L.R.  
 PED DIR. 97/23/EC by L.R.  
 ATEX DIR. 94/9/EC by B.V.  
 FIRE SAFE EXECUTION by L.R.  
 ISO 15848 by TÜV  
 ANTISTATIC DEVICE by L.R.  
 FIRE SAFE TESTED ISO 10497 by L.R.

TYPE  
**RT7**  
 PN 25 ÷ 63

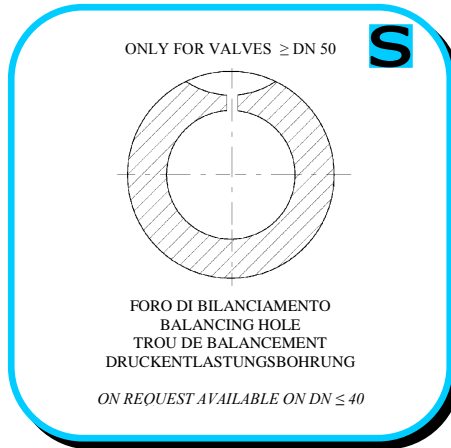
VALVOLE A SFERA "4 VIE" CON SFERA A X  
 BALL VALVES "4 VIE" WITH X BALL

ROBINETS A BOISSEAU SPHERIQUE "4 VOIES" AVEC BOULE A X  
 KUGELHÄHNE "4 WEGE" MIT X KUGEL

• ESECUZIONI • EXECUTIONS • EXECUTIONS • AUSFÜHRUNGEN



EXECUTION 4 - 12



EXECUTION 6 - 16

**S** STANDARD

**O** OPTIONAL

**1** **S**

**SEE TABLE 23  
 FOR TYPE  
 OF THREAD**

**2** **S** INDICATORE DI FLUSSO  
 FLOW INDICATOR

SEE OBTAINABLE POSITIONS  
 ON DATASHEET

**2** **S** INDICATORE DI FLUSSO  
 FLOW INDICATOR  
 Linked Way

SEE OBTAINABLE POSITIONS  
 ON DATASHEET

**4** **S**

-STELO ANTI ESPULSIONE -ANTI BLOW OUT STEM  
 -TIGE ANTIEXPULSION -AUSBLASGESICHERTE WELLE

-PACCO A "V" -CHEVRON RINGS  
 -JOINT A "V" -3 FACHE DACHMANSCHETE  
 ANTISTATIC DEVICE ANTISTATIK VORRICHTUNG  
 BS 5146

**5** **O**

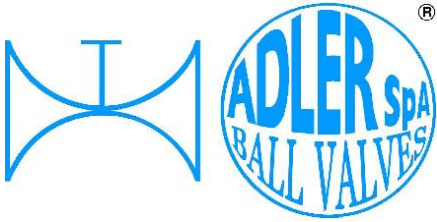
-MANIGLIA OVALE - OVAL HANDLE  
 -LEVIER OVAL -HANDHEBEL IN OVALFORM

**6** **O** **BREVETTO - PATENTED**  
 002196883

FKM (VITON)  
 Ø 1/2" ÷ 2"

-"O" RING STELO "O" RING ON STEM  
 -TIGE AVEC "O" RING  
 -"O" RING IM SPINDELBEREICH





ISO 9001:2008 by L.R.  
 PED DIR. 97/23/EC by L.R.  
 ATEX DIR. 94/9/EC by B.V.  
 FIRE SAFE EXECUTION by L.R.  
 ISO 15848 by TÜV  
 ANTISTATIC DEVICE by L.R.  
 FIRE SAFE TESTED ISO 10497 by L.R.

TYPE  
**RT7**  
 PN 25 ÷ 63

VALVOLE A SFERA "4 VIE" CON SFERA A X  
 BALL VALVES "4 VIE" WITH X BALL

ROBINETS A BOISSEAU SPHERIQUE "4 VOIES" AVEC BOULE A X  
 KUGELHÄHNE "4 WEGE" MIT X KUGEL

• ESECUZIONI • EXECUTIONS • EXECUTIONS • AUSFÜHRUNGEN

**7** **O**

-PROLUNGA STELO -STEM EXTENSION  
 -TIGE PROLONGEE -SPINDELVERLÄNGERUNG

**8** **O**

-PARTICOLARI INOX  
 -STAINLESS STEEL DETAILS  
 -ACCESSOIRES EN INOX  
 -EDELSTAHLTEILE

**9** **S**

-ATTACCO "ISO" -"ISO" CONNECTIONS  
 -SYSTEM "ISO" - ANSCHLUSS "ISO"

**10** **S**

-SFERA CONTENUTA -CONTENTS BALL  
 -BOULE CONTENUE  
 -NICHT RAUSRAGENDE KUGEL

AQUILA - EAGLE - AIGLE  
 ADLER

**12** **O**

FIRE SAFE  
 ISO 10497 "ISO-FT"  
 (BS 6755 / API 607)

**13** **S**

-ANELLO CONTENUTO -CONTAINED SEAL  
 -ANNEAU CONTENU -DICHRING GEKAMMERT  
 -GHIERA A BATTUTA -METAL BEATING RING  
 -EMBOUT AVEC BATTUE MECANIQUE  
 -METALLISCHER ANSCHLAG DES  
 GEWINDEDRUCKRINGS

THREAD GAUGES

**15** **O**

P.T.F.E./GRAPHITE  
 100-250  
 P.T.F.E.  
 -SERVIZIO CRYOGENICO -CRYOGENIC SERVICE  
 -SERVICE CRYOGENIQUE  
 -TIEFTEMPORATUR SERVICE

DESIGN CHECK

**17** **S**

VALVOLE IN ACCIAIO INOX  
 STAINLESS STEEL BALL VALVES  
 Ø 1/4" - 3/8" - 1/2" - 3/4" - 1" - 1 1/4" - 2"

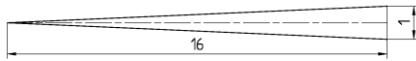
VALVOLE IN ACCIAIO AL CARBONIO  
 CARBON STEEL BALL VALVES

**18** **S**

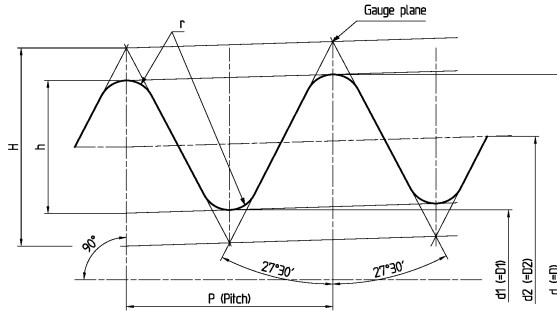
Ø 1/2" - 1" - 1 1/2"

VALVOLE IN ACCIAIO INOX  
 STAINLESS STEEL BALL VALVES

**IN ACCORDANCE TO  
ISO 7-1 – 1994**

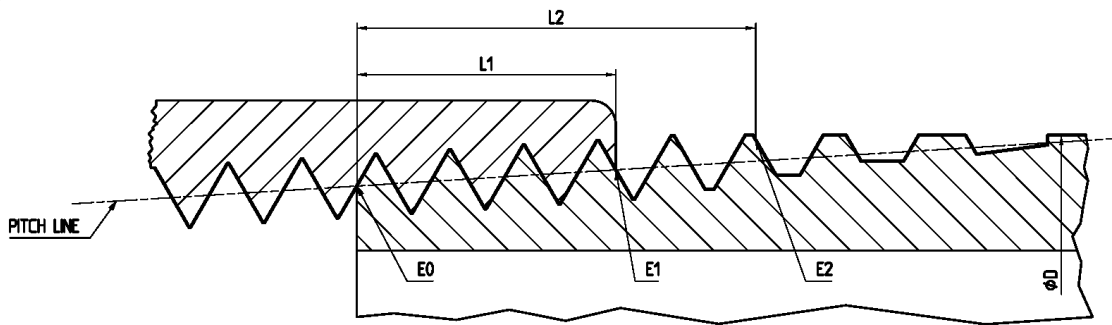


H= 0.960 237 P  
h= 0.640 327 P  
r= 0.137 278 P



1 Designation of thread size	2 Number of threads in 25.4 mm	3 Pitch P	4 Height of thread h	5 Diameters of gauges plane			8 Gauges length (external threads)					13 Tolerance on position of gauge plan on internal thread		15 Length of useful external thread not less than			18 Fitting allowance		20 Diameter tolerance on parallel internal threads
				6 Major d	7 Pitch d <sub>2</sub>	11 Minor d <sub>1</sub>	9 Nominal	10 Tolerance ±t <sub>1</sub> /2			14 Tolerance ±t <sub>2</sub> /2		16 For nominal gauge length	17 For maximum gauge length	19 For minimum gauge length	2)   Turns of thread	Turns of thread		
								Turns of thread	Max.	Min.	2)   Turns of thread								
¼	19	1,337	0,856	13,15	12,30	11,44	6	1,3	1	7,3	4,7	1,7	1 ¼	9,7	11	8,4	3,7	2 ¾	±0,104
3/8	19	1,337	0,856	16,66	15,80	14,95	6,4	1,3	1	7,7	5,1	1,7	1 ¼	10,1	11,4	8,8	3,7	2 ¾	±0,104
½	14	1,814	1,162	20,95	19,79	18,63	8,2	1,8	1	10	6,4	2,3	1 ¼	13,2	15	11,4	5	2 ¾	±0,142
¾	14	1,814	1,162	26,44	25,27	24,11	9,5	1,8	1	11,3	7,7	2,3	1 ¼	14,5	16,3	12,7	5	2 ¾	±0,142
1	11	2,309	1,479	33,24	31,77	30,29	10,4	2,3	1	12,7	8,1	2,9	1 ¼	16,8	19,1	14,5	6,4	2 ¾	±0,180
1 ¼	11	2,309	1,479	41,91	40,43	38,95	12,7	2,3	1	15	10,4	2,9	1 ¼	19,1	21,4	16,8	6,4	2 ¾	±0,180
1 ½	11	2,309	1,479	47,80	46,32	44,84	12,7	2,3	1	15	10,4	2,9	1 ¼	19,1	21,4	16,8	6,4	2 ¾	±0,180
2	11	2,309	1,479	59,61	58,13	56,65	15,9	2,3	1	18,2	13,6	2,9	1 ¼	23,4	25,7	21,1	7,5	3 ¼	±0,180

**IN ACCORDANCE TO  
ANSI B1.20.1 – 1983**



1 Nominal Pipe Size	2 O.D. of Pipe (D)	3 Threads/inch (n)	4 Pitch of threads (P)	5 Pitch diam. at beginning of external thread (E <sub>0</sub> )	6 Handtight engagement			9 Effective thread, external		
					7 Length <sup>2</sup> (L <sub>1</sub> )		8 Diam. <sup>3</sup> (E <sub>1</sub> )	10 Length <sup>4</sup> (L <sub>2</sub> )		11 Diam. <sup>5</sup> (E <sub>2</sub> )
					inch	threads		inch	threads	
¼	0,540	18	0,05556	0,47739	0,2278	4,1	0,49163	0,4018	723	0,50250
3/8	0,675	18	0,05556	0,61201	0,240	4,32	0,32701	0,4078	734	0,63750
½	0,840	14	0,07143	0,75843	0,320	4,48	0,77843	0,5337	747	0,79179
¾	1,050	14	0,07143	0,96768	0,339	4,75	0,98887	0,5457	764	1,00179
1	1,315	11,5	0,0896	1,21363	0,400	4,6	1,23863	0,6828	785	1,25630
1 ¼	1,660	11,5	0,0896	1,55713	0,420	4,83	1,58338	0,7068	813	1,60130
1 ½	1,900	11,5	0,0896	1,79609	0,420	4,83	1,82237	0,7235	832	1,84130
2	2,375	11,5	0,0896	2,26902	0,436	5,01	2,29627	0,7565	870	2,31630

RT7/15 RIPRODUZIONE VIETATA - COPYRIGHT