

CORROSION/MOISTURE RESISTANT CHAIN

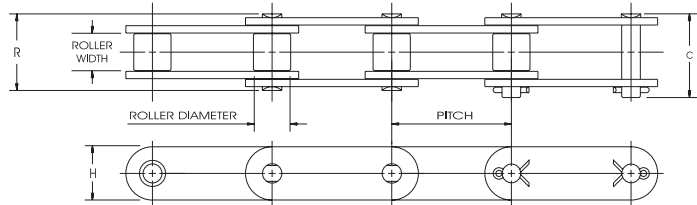
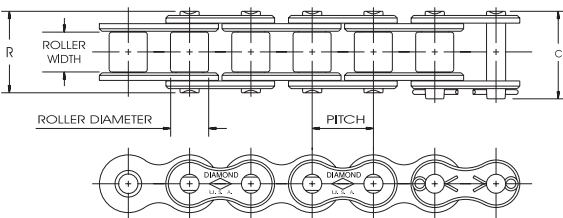
Chain Descriptions and Dimensions

Nickel-Plated Chain

Diamond Chain produces a full line of Nickel-Plated roller chains for a variety of uses in environments where the chains are exposed to moisture. Common uses include applications exposed to the weather, high humidity or those on machines that are frequently washed down with water.

Diamond Nickel-Plated chain is different from many rust-resistant chains, because Diamond electroless nickel plates all of the components before assembly, virtually eliminating the possibility of stress-corrosion cracking. Pre-assembly plating also ensures all components are plated, which prevents internal rust from seeping out and causing contamination. Standard attachments are available with quick delivery. See standard attachment chain section for dimensional information.

Note: These chains are not intended to resist corrosion from caustic chemicals or acids. For those types of applications, stainless steel chain is recommended.



Dimensions in Inches and Pounds

| Diamond Number | Pitch Inches | Roller Width | Roller Diameter | Pin Diameter | Link Plate Thickness | C | R | Weight Per Foot | Average Tensile Strength |
|----------------|--------------|--------------|-----------------|--------------|----------------------|------|------|-----------------|--------------------------|
| 25NP | 1/4 | 1/8 | *.130 | .090 | .030 | .37 | .34 | .085 | 875 |
| 35NP | 3/8 | 3/16 | *.200 | .141 | .050 | .56 | .50 | .220 | 2100 |
| 40NP | 1/2 | 5/16 | .312 | .156 | .060 | .72 | .67 | .420 | 4000 |
| 50NP | 5/8 | 3/8 | .400 | .200 | .080 | .89 | .83 | .680 | 6600 |
| 60NP | 3/4 | 1/2 | .469 | .234 | .094 | 1.11 | 1.04 | .970 | 8500 |
| 80NP | 1 | 5/8 | .625 | .312 | .125 | 1.44 | 1.32 | 1.700 | 14500 |
| 100NP | 1 1/4 | 3/4 | .750 | .375 | .156 | 1.73 | 1.61 | 2.500 | 24000 |
| 120NP | 1 1/2 | 1 | .875 | .437 | .187 | 2.14 | 2.00 | 3.700 | 34000 |
| C2040NP | 1 | 5/16 | .312 | .156 | .060 | .76 | .68 | .320 | 3700 |
| C2050NP | 1 1/4 | 3/8 | .400 | .200 | .080 | .92 | .84 | .550 | 6100 |
| C2060HNP | 1 1/2 | 1/2 | .469 | .234 | .125 | 1.25 | 1.18 | .970 | 8500 |

* Chains are rollerless — dimension shown is bushing diameter.

Standard attachments are available for above models.

CORROSION/MOISTURE RESISTANT CHAIN

Chain Descriptions and Dimensions

Diamond ACE®

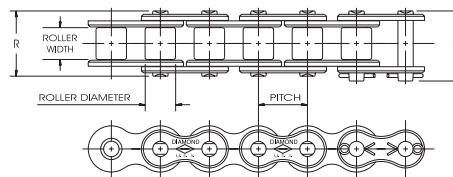
Diamond ACE (Anti-Corrosion Exterior) chain is uniquely designed and incorporates an electrochemically bonded, protected exterior coating that is applied to the component parts prior to assembly. Pre-assembly coating ensures all component parts are thoroughly treated, which prevents internal rust from seeping out and causing contamination.

The protective coating serves as an insulating barrier that actually oxidizes before the carbon steel base chain, thus protecting and preserving the chain's physical and structural integrity.

Common applications for Diamond ACE include exposure to weather, high humidity or on machinery that is routinely washed down with water. Standard attachments are available with quick delivery. See standard attachment chain section for dimensional program.

Note: These chains are not intended to resist corrosion from caustic chemicals or acids. Stainless steel chain is normally recommended for those types of applications. Contact Diamond's Application Engineers for assistance in selecting the proper chain for your application.

Single-Pitch Drive chains

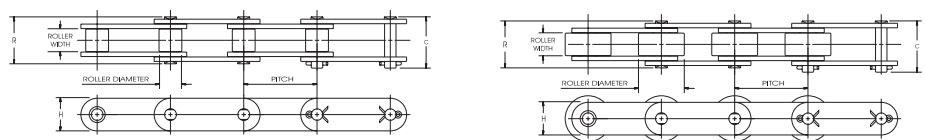


Dimensions in Inches and Pounds

| Diamond Number | Pitch Inches | Roller Width | Roller Diameter | Pin Diameter | Link Plate Thickness | C | R | Weight Per Foot | Average Tensile Strength |
|----------------|--------------|--------------|-----------------|--------------|----------------------|-------|-------|-----------------|--------------------------|
| 40 ACE | 1/2 | 5/16 | .312 | .156 | .060 | .720 | .670 | .420 | 4000 |
| 50 ACE | 5/8 | 3/8 | .400 | .200 | .080 | .890 | .830 | .680 | 6600 |
| 60 ACE | 3/4 | 1/2 | .469 | .234 | .094 | 1.110 | 1.040 | .970 | 8500 |
| 80 ACE | 1 | 5/8 | .625 | .312 | .125 | 1.440 | 1.320 | 1.700 | 14500 |

* For sizes not listed, contact Diamond for availability on a made-to-order basis. Standard attachments are available for above models.

Double-Pitch Drive chains



Dimensions in Inches and Pounds

| Diamond Number | Pitch Inches | Roller Width | Roller Diameter | Pin Diameter | Link Plate Thickness | C | R | Weight Per Foot | Average Tensile Strength |
|----------------|--------------|--------------|-----------------|--------------|----------------------|-------|-------|-----------------|--------------------------|
| C-2040 ACE | 1 | 5/16 | .312 | .156 | .060 | .760 | .680 | .340 | 3700 |
| C-2042 ACE | 1 | 5/16 | .625 | .156 | .060 | .760 | .680 | .340 | 3700 |
| C-2050 ACE | 1 1/4 | 3/8 | .400 | .200 | .080 | .920 | .840 | .580 | 6100 |
| C-2052 ACE | 1 1/4 | 3/8 | .750 | .200 | .080 | .920 | .840 | .580 | 6100 |
| C-2060H ACE | 1 1/2 | 1/2 | .469 | .234 | .125 | 1.250 | 1.180 | 1.050 | 8500 |
| C-2060H ACE | 1 1/2 | 1/2 | .875 | .234 | .125 | 1.250 | 1.180 | 1.050 | 8500 |
| C-2080H ACE | 2 | 5/8 | .625 | .312 | .156 | 1.570 | 1.450 | 1.400 | 14500 |
| C-2080H ACE | 2 | 5/8 | 1.125 | .312 | .156 | 1.570 | 1.450 | 1.400 | 14500 |

* For sizes not listed, contact Diamond for availability on a made-to-order basis. Standard attachments are available for above models.

CORROSION/MOISTURE RESISTANT CHAIN

Chain Descriptions and Dimensions

Stainless Steel Chain

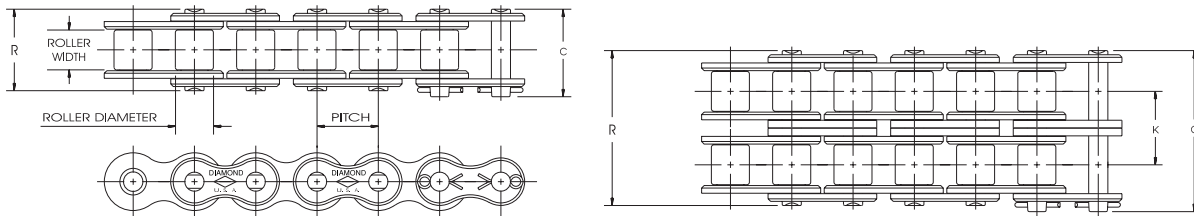
Diamond produces a wide range of Single-Pitch Drive and Double-Pitch Conveyor chains manufactured in four combinations of stainless steel depending upon the specific application.

AP Stainless Chain: This chain is assembled using 300 Series (austenitic stainless) link plates, bushings and rollers along with a precipitation-hardened stainless steel pin. This combination increases the wear life of this chain over those constructed entirely of 300 Series components. AP Stainless chains are well suited for food processing, and are approved by the Food and Drug Administration. AP Stainless will be supplied unless otherwise specified.

300 Series Stainless Chain: These chains are assembled entirely from 300 Series (austenitic) components. They have excellent corrosion resistance and very low magnetic permeability but cannot be expected to have the same wear resistance of our heat treated stainless chains. For industries that require it, 300 Series chains can be considered “non-sparking.”

400 Series Stainless Chain: These chains are manufactured using 300 Series link plates but have pins, bushings and rollers that are produced from 400 Series (martensitic) heat treated stainless. This combination significantly increases wear resistance over those that are constructed using only 300 Series stainless chains. The properties of the 400 Series heat treated parts may, in some instances, cause them to discolor when in contact with certain chemicals.

600 Series Stainless Chain: These chains are assembled using 300 Series link plates, with pins, bushings and rollers made from 600 Series (17-4/17-7) precipitation-hardened stainless.



Dimensions in Inches and Pounds

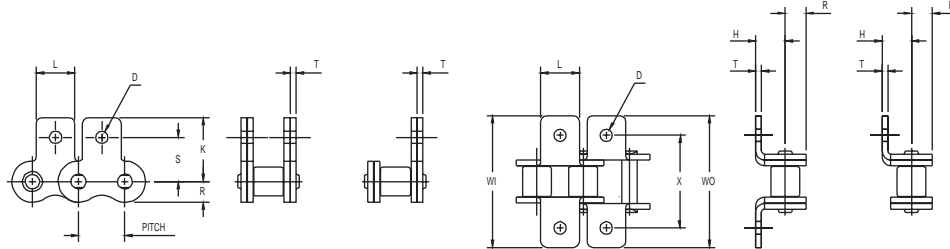
| Diamond Number | Pitch Inches | Roller Width | Roller Diameter | Pin Diameter | LinkPlate Thickness | C | R | K | Weight Per Foot | Average Tensile Strength |
|----------------|--------------|--------------|-----------------|--------------|---------------------|------|------|-------|-----------------|--------------------------|
| 47SS | .1475 | .072 | *.090 | .062 | .015 | .25 | .22 | | .035 | 180 |
| 25SS | 1/4 | 1/8 | *.130 | .090 | .030 | .37 | .34 | | .084 | 700 |
| 25-2SS | 1/4 | 1/8 | *.130 | .090 | .030 | .63 | .59 | .252 | .163 | 1400 |
| 35SS | 3/8 | 3/16 | *.200 | .141 | .050 | .56 | .50 | | .210 | 1700 |
| 40SS | 1/2 | 5/16 | .312 | .156 | .060 | .72 | .67 | | .410 | 3000 |
| 40-2SS | 1/2 | 5/16 | .312 | .156 | .060 | 1.29 | 1.24 | .566 | .800 | 6000 |
| 41SS | 1/2 | 1/4 | .306 | .141 | .050 | .65 | .57 | | .280 | 1700 |
| 50SS | 5/8 | 3/8 | .400 | .200 | .080 | .89 | .83 | | .680 | 4700 |
| 50-2SS | 5/8 | 3/8 | .400 | .200 | .080 | 1.60 | 1.55 | .713 | 1.320 | 9400 |
| 60SS | 3/4 | 1/2 | .469 | .234 | .094 | 1.11 | 1.04 | | 1.000 | 6750 |
| 60-2SS | 3/4 | 1/2 | .469 | .234 | .094 | 2.01 | 1.94 | .897 | 1.950 | 13500 |
| 80SS | 1 | 5/8 | .625 | .312 | .125 | 1.44 | 1.32 | | 1.690 | 12000 |

* Chains are rollerless — dimension shown is bushing diameter.

CORROSION/MOISTURE RESISTANT CHAIN

Chain Descriptions and Dimensions

Standard Straight and Bent Attachment Stainless Steel Chain



| Others | Diamond |
|-----------|---------------|
| M-35, SA1 | S1 (one hole) |
| M-1, SK1 | S2 (one hole) |

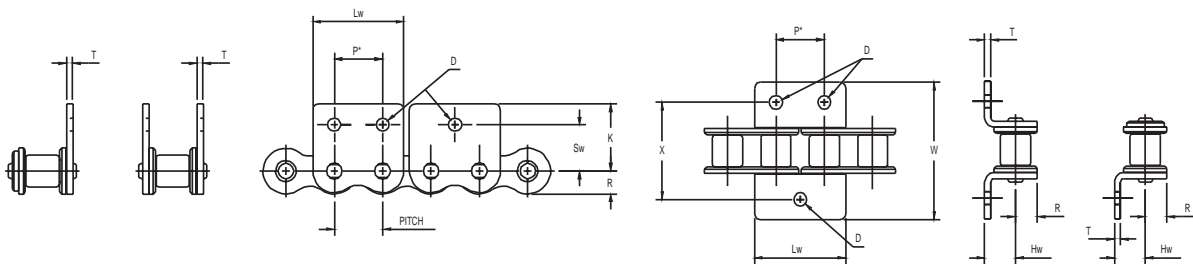
| Others | Diamond |
|--------|---------------|
| A1 | B1 (one hole) |
| K1 | B2 (one hole) |

Dimensions in Inches

| Diamond Number | Pitch Inches | D | H | K | L | R Max. | S | T | WI | WO | X |
|----------------|--------------|------|------|-------|------|--------|------|------|-------|-------|-------|
| 25SS | .250 | .125 | .180 | .451 | .218 | .119 | .308 | .030 | .781 | .843 | .562 |
| 35SS | .375 | .102 | .250 | .577 | .312 | .178 | .387 | .050 | 1.125 | 1.125 | .750 |
| 40SS | .500 | .141 | .312 | .684 | .375 | .238 | .489 | .060 | 1.390 | 1.390 | 1.000 |
| 41SS | .500 | .141 | .282 | .698 | .375 | .192 | .482 | .050 | 1.375 | 1.375 | .937 |
| 50SS | .625 | .203 | .406 | .895 | .500 | .297 | .618 | .080 | 1.812 | 1.812 | 1.250 |
| 60SS | .750 | .203 | .478 | 1.038 | .625 | .356 | .716 | .094 | 2.135 | 2.135 | 1.500 |
| 80SS | 1.000 | .266 | .625 | 1.339 | .750 | .475 | .968 | .125 | 2.750 | 2.750 | 2.000 |

Above attachments available for multiple strand chain.

Wide Contour Straight and Bent Attachment Stainless Steel Chain



| Others | Diamond | Others | Diamond |
|---------|------------------|--------|------------------|
| WM-35 | WCS1 (one hole) | WM-1 | WCS2 (one hole) |
| WM-35-2 | WCS1 (two holes) | WM-2 | WCS2 (two holes) |

| Others | Diamond | Others | Diamond |
|----------|------------------|----------|------------------|
| WA-1 | WCB1 (one hole) | WK-1 | WCB2 (one hole) |
| WA-2, A2 | WCB1 (two holes) | WK-2, K2 | WCB2 (two holes) |

Dimensions in Inches

| Diamond Number | Pitch Inches | D | Hw | K | Lw | P | R Max. | Sw | T | W | X |
|----------------|--------------|------|------|-------|-------|-------|--------|------|------|-------|-------|
| 35SS | .375 | .125 | .262 | .577 | .727 | .375 | .178 | .399 | .050 | 1.105 | .750 |
| 40SS | .500 | .141 | .326 | .684 | .946 | .500 | .238 | .503 | .060 | 1.366 | 1.000 |
| 50SS | .625 | .203 | .406 | .895 | 1.211 | .625 | .297 | .618 | .080 | 1.807 | 1.250 |
| 60SS | .750 | .203 | .478 | 1.038 | 1.420 | .750 | .356 | .716 | .094 | 2.135 | 1.500 |
| 80SS | 1.000 | .266 | .625 | 1.339 | 1.885 | 1.000 | .475 | .967 | .125 | 2.750 | 2.000 |

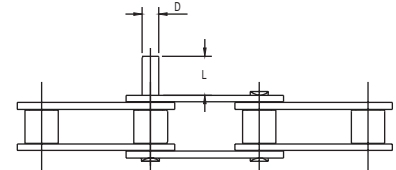
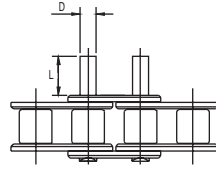
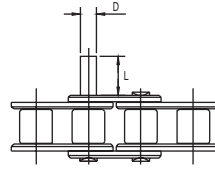
Contact Diamond Chain for available attachments on roller links (wide contour).
Above attachments available for multiple strand chain.

CORROSION/MOISTURE RESISTANT CHAIN

Chain Descriptions and Dimensions

Standard Extended Pin Stainless Steel Chain

| Others | Diamond |
|--------|------------------------|
| D1 | E1 (one extended pin) |
| D3 | E2 (two extended pins) |

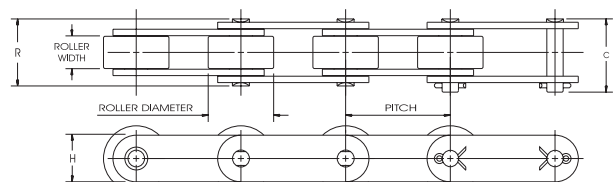
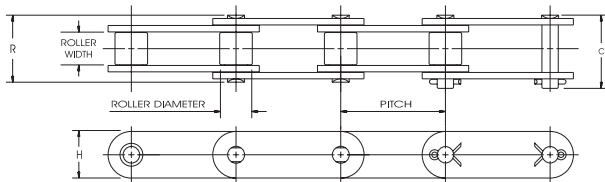


Dimensions in Inches

| Diamond Number | Pitch Inches | D ± .0005" | L ± .010" |
|----------------|--------------|---------------|--------------|
| 35SS | .375 | .141 | .375 |
| 40SS | .500 | .156 | .383 |
| 41SS | .500 | .141 | .375 |
| 50SS | .625 | .200 | .469 |
| 60SS | .750 | .234 | .562 |
| 80SS | 1.000 | .312 | .750 |

Dimensions in Inches

| Diamond Number | Pitch Inches | D ± .0005" | L ± .010" |
|----------------|--------------|---------------|--------------|
| C2040SS | 1.00 | .156 | .375 |
| C2042SS | 1.00 | .156 | .375 |
| C2050SS | 1.25 | .200 | .469 |
| C2052SS | 1.25 | .200 | .469 |
| C2060SS | 1.50 | .234 | .562 |
| C2062SS | 1.50 | .234 | .562 |
| C2080SS | 2.00 | .312 | .750 |
| C2082SS | 2.00 | .312 | .750 |



Double-Pitch Oval Contour Stainless Steel Conveyor Chain - Standard Diameter Roller

Dimensions in Inches and Pounds

| Diamond Number | Pitch Inches | Roller Width | Roller Diameter | Pin Diameter | Link Plate Thickness | C | R | Weight Per Foot | Average Tensile Strength |
|----------------|--------------|--------------|-----------------|--------------|----------------------|------|------|-----------------|--------------------------|
| C-2040SS | 1 | 5/16 | .312 | .156 | .060 | .76 | .68 | .34 | 3000 |
| C-2050SS | 1 1/4 | 3/8 | .400 | .200 | .080 | .92 | .84 | .56 | 4700 |
| C-2060SS | 1 1/2 | 1/2 | .469 | .234 | .094 | 1.11 | 1.05 | .81 | 6750 |
| C-2080SS | 2 | 5/8 | .625 | .312 | .125 | 1.44 | 1.32 | 1.40 | 12000 |

Double-Pitch Oval Contour Stainless Steel Conveyor Chain - Large Diameter Roller

Dimensions in Inches and Pounds

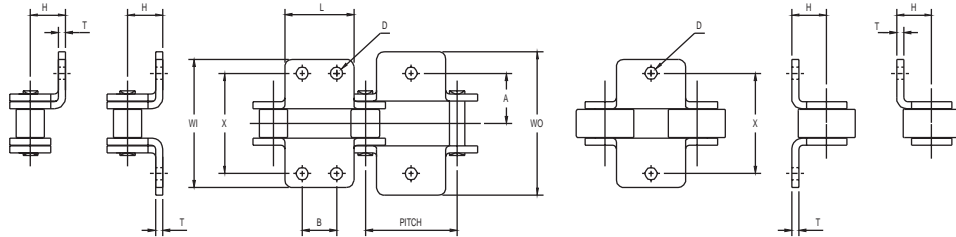
| Diamond Number | Pitch Inches | Roller Width | Roller Diameter | Pin Diameter | Link Plate Thickness | C | R | Weight Per Foot | Average Tensile Strength |
|----------------|--------------|--------------|-----------------|--------------|----------------------|------|------|-----------------|--------------------------|
| C-2042SS | 1 | 5/16 | .625 | .156 | .060 | .76 | .68 | .55 | 3000 |
| C-2052SS | 1 1/4 | 3/8 | .750 | .200 | .080 | .92 | .84 | .86 | 4700 |
| C-2062SS | 1 1/2 | 1/2 | .875 | .234 | .094 | 1.11 | 1.05 | 1.27 | 6750 |
| C-2082SS | 2 | 5/8 | 1.125 | .312 | .125 | 1.44 | 1.32 | 2.06 | 12000 |

CORROSION/MOISTURE RESISTANT CHAIN



Chain Descriptions and Dimensions

Double-Pitch Oval Contour Stainless Steel Conveyor Chain Bent Attachments Oval Contour Link Plates Standard and Oversized Roller



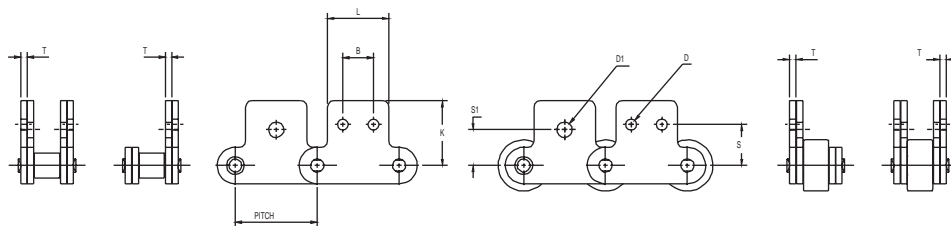
| Others | Diamond |
|--------|----------------|
| A1 | B1 (one hole) |
| A2 | B1 (two holes) |

| Others | Diamond |
|--------|----------------|
| K1 | B2 (one hole) |
| K2 | B2 (two holes) |

Dimensions in Inches

| Standard Roller | | Pitch Inches | A | B | D | H | L | T | WI | WO | X | Large Roller | |
|-----------------|-----------------|--------------|-------|------|------|------|-------|------|-------|-------|-------|----------------|-----------------|
| Diamond Number | Roller Diameter | | | | | | | | | | | Diamond Number | Roller Diameter |
| C2040SS | .312 | 1.00 | .500 | .375 | .141 | .355 | .750 | .060 | 1.350 | 1.488 | 1.000 | C2042SS | .625 |
| C2050SS | .400 | 1.25 | .625 | .469 | .203 | .453 | .937 | .080 | 1.692 | 1.863 | 1.250 | C2052SS | .750 |
| C2060SS | .469 | 1.50 | .844 | .562 | .203 | .561 | 1.125 | .094 | 2.115 | 2.317 | 1.688 | C2062SS | .875 |
| C2080SS | .625 | 2.00 | 1.094 | .750 | .266 | .739 | 1.500 | .125 | 2.760 | 3.028 | 2.188 | C2082SS | 1.125 |

Double-Pitch Oval Contour Stainless Steel Conveyor Chain Straight Attachments Oval Contour Link Plates Standard and Oversized Roller



| Others | Diamond |
|-------------|----------------|
| M-35, SA1 | S1 (one hole) |
| M-35-2, SA2 | S1 (two holes) |

| Others | Diamond |
|----------|----------------|
| M-1, SK1 | S2 (one hole) |
| M-2, SK2 | S2 (two holes) |

Dimensions in Inches

| Standard Roller | | Pitch Inches | 2 Attachment Holes | | | K | L | T | 1 Attachment Hole | | Large Roller | |
|-----------------|-----------------|--------------|--------------------|------|-------|-------|-------|------|-------------------|------|----------------|-----------------|
| Diamond Number | Roller Diameter | | B | D | S | | | | D1 | S1 | Diamond Number | Roller Diameter |
| C2040SS | .312 | 1.00 | .375 | .141 | .531 | .773 | .750 | .060 | .188 | .438 | C2042SS | .625 |
| C2050SS | .400 | 1.25 | .469 | .203 | .625 | .971 | .937 | .080 | .250 | .563 | C2052SS | .750 |
| C2060SS | .469 | 1.50 | .562 | .203 | .750 | 1.203 | 1.125 | .094 | .329 | .688 | C2062SS | .875 |
| C2080SS | .625 | 2.00 | .750 | .266 | 1.000 | 1.590 | 1.500 | .125 | .375 | .875 | C2082SS | 1.125 |