

ISO 9001:2008 by L.R.
PED DIR. 97/23/EC by L.R.
ATEX DIR. 94/9/EC by B.V.
FIRE SAFE EXECUTION by L.R.
ISO 15848 by TÜV
ANTISTATIC DEVICE by L.R.
FIRE SAFE TESTED ISO 10497 by L.R.

TYPE
FG2
ANSI 300

NORME E DIRETTIVE APPLICATE DISPONIBILI AL SEGUENTE LINK:
STANDARD AND DIRECTIVE APPLIED AVAILABLE AT FOLLOWING LINK:
http://www.adlerspa.com/pdf/NORME_ADLER.pdf

VALVOLE A SFERA "ANSI B 16.10" SPLIT BODY PASSAGGIO TOTALE

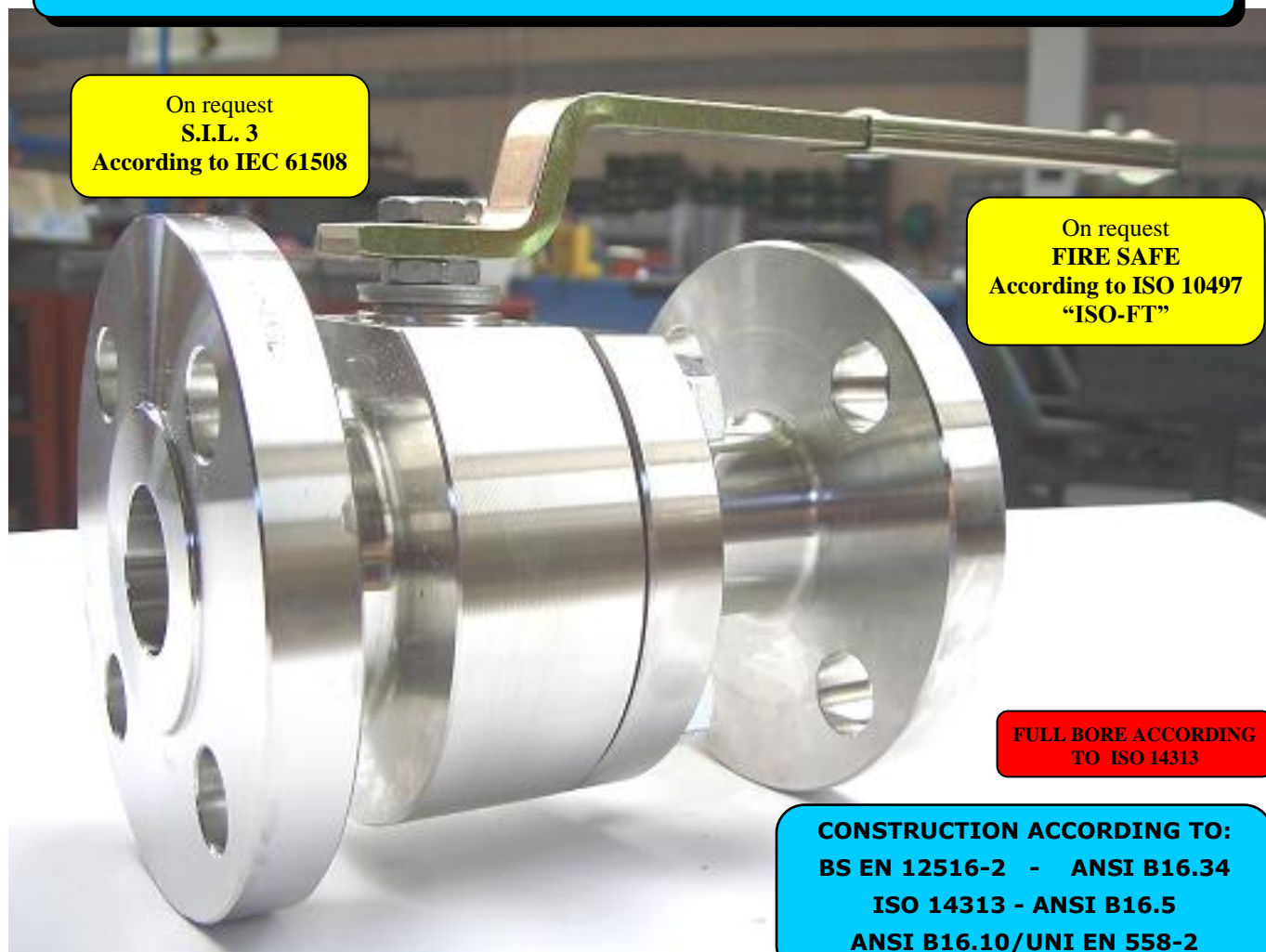
ISO nbr° LRC 0160281 QMS issued by L.R.Q.A. PED nbr° COV 0212112/01 issued by L.R.V.
ATEX nbr° 40.2003.4392 issued by B.V. ISO 15848 nbr° I-148466/1-/2 issued by TÜV

On request
S.I.L. 3
According to IEC 61508

On request
FIRE SAFE
According to ISO 10497
"ISO-FT"

FULL BORE ACCORDING
TO ISO 14313

CONSTRUCTION ACCORDING TO:
BS EN 12516-2 - ANSI B16.34
ISO 14313 - ANSI B16.5
ANSI B16.10/UNI EN 558-2



BALL VALVES
"ANSI B 16.10" FULL BORE SPLIT BODY
"ANSI B 16.10" PASSAGE INTEGRAL 2 PIECES
FLANSCHKUGELH ROBINETS A BOISSEA SPHERIQUE
ÄHNE IN "ANSI B 16.10"
VOLLER DURCHGANG ZWEITEILIGES GEHÄUSE

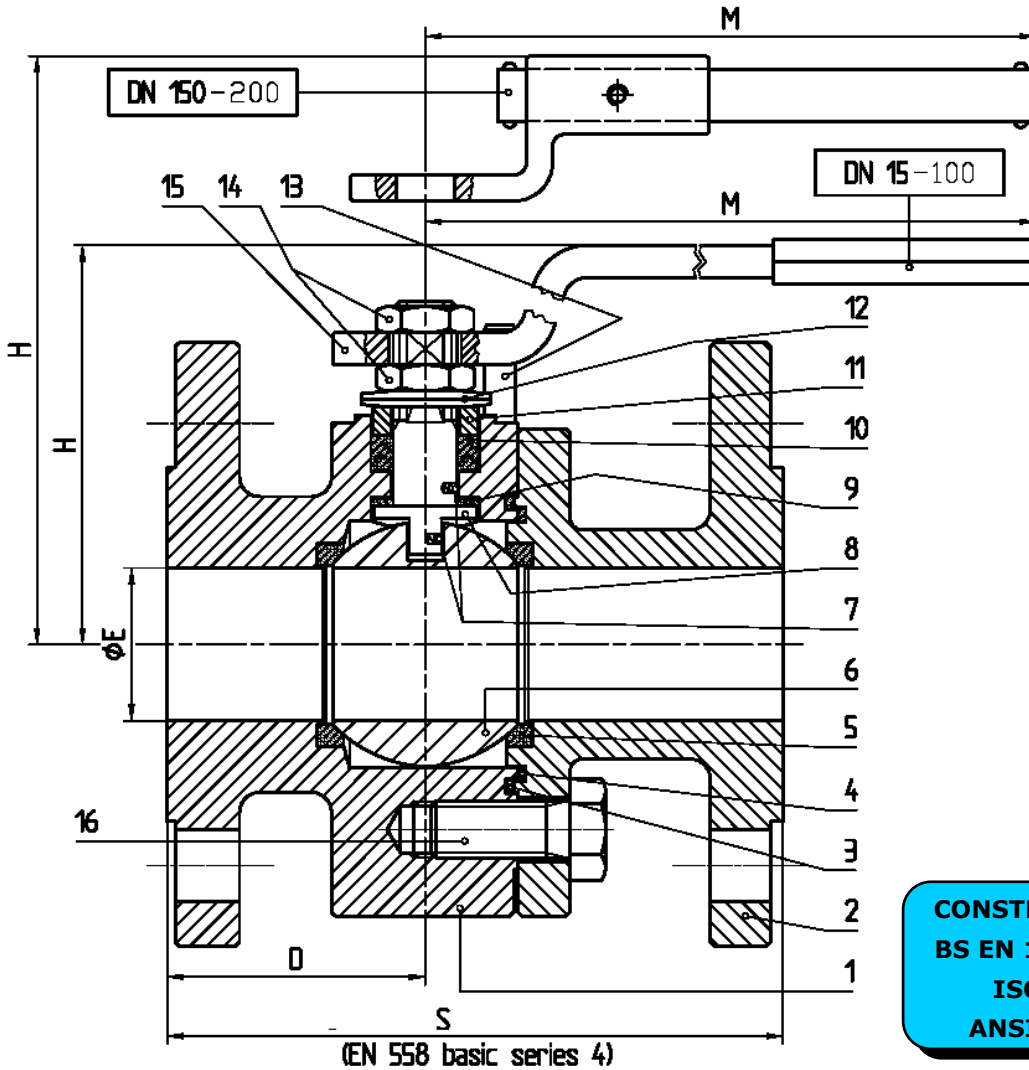
WEB SITE: WWW.ADLERSPA.COM



ISO 9001:2008 by L.R.
 PED DIR. 97/23/EC by L.R.
 ATEX DIR. 94/9/EC by B.V.
 FIRE SAFE EXECUTION by L.R.
 ISO 15848 by TÜV
 ANTISTATIC DEVICE by L.R.
 FIRE SAFE TESTED ISO 10497 by L.R.

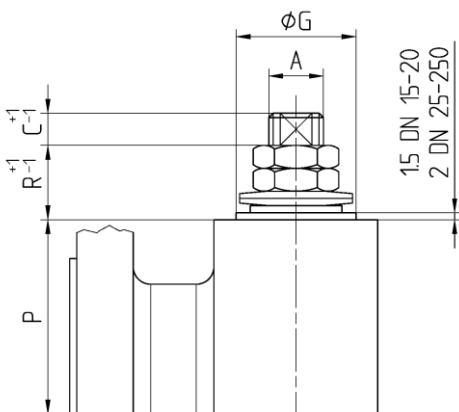
TYPE
FG2
 ANSI 300

VALVOLA A SFERA "ANSI B 16.10" SPLIT BODY PASSAGGIO TOTALE
 BALL VALVES "ANSI B 16.10" SPLIT BODY FULL BORE
 ROBINETS A BOISSEAU SPHERIQUE "ANSI B 16.10" PASSAGE INTEGRAL 2 PIECES
 FLANSCHKUGELHÄHNE IN "ANSI B 16.10" VOLLER DURCHGANG ZWEIFTEILIGES GEHÄUSE

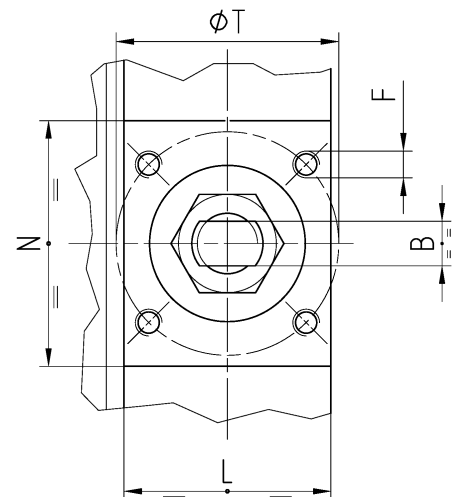


DN 150 ÷ 250
 -CONSIGLIATO
 -RIDUTTORE MANUALE
 -MANUAL GEAR BOX
 SUGGESTED
 -REDUCTEUR MANUEL
 CONSEILLE
 -EMPFEHLEN WIR EIN
 HANDGETRIEBE

CONSTRUCTION ACCORDING TO:
 BS EN 12516-2 - ANSI B16.34
 ISO 14313 - ANSI B16.5
 ANSI B16.10/UNI EN 558-2



• ACCOPPIAMENTO VALVOLA
 ATTUATORE
 • CONNECTION VALVE
 ACTUATOR
 • ACCOUPLEMENT ROBINET-
 ACTIONNEUR
 • ZUSAMMENBAU KUGELHAHN
 ANTRIEB
ISO-5211



N.	DESCRIZIONE DESCRIPTION BESCHREIBUNG	MATERIALI MATERIALS MATERIAUX WERKSTOFFE
1	CORPO BODY CORPS KÖRPER	ASTM A105 ASTM A479 304/304L ASTM A 4479 316/316L ASTM A 351 CF8M
2	LATERALE END LATERAL GEGENGEHÄUSE	ASTM A105 ASTM A479 304/304L ASTM A 4479 316/316L ASTM A 351 CF8M
3*	O-RING	FKM - (VITON)
4*	ANELLO SEAL ANNEAU DICHTUNGSRING	P.T.F.E.
5*	SEDE SEAT SIEGE SITZRING	R.P.T.F.E.
6	SFERA BALL BOULE KUGEL	ASTM A 4479 304/304L ASTM A351 CF8 ASTM A 4479 316/316L ASTM A351 CF8M
7	DISPOSITIVO ANTISTATICO ANTISTATIC DEVICE CONTACT ANTISTATIQUE ANTISTATIK VORRICHTUNG	ASTM A 4479 316/316L
8	STELO STEM TIGE SPINDEL	ASTM A 4479 304/304L ASTM A 4479 316/316L

N.	DESCRIZIONE DESCRIPTION BESCHREIBUNG	MATERIALI MATERIALS MATERIAUX WERKSTOFFE
9*	BUSSOLA STEM SEAL JOINT TIGE UNTERE SPINDELABDICHTUNG	P.T.F.E.
10*	PACCO A "V" CHEVRON RINGS JOINT A "V" 3 FACHE DACHMANSCHETTE	P.T.F.E. / GRAFITE P.T.F.E. / GRAPHITE P.T.F.E. / GRAPHIT P.T.F.E. / GRAPHIT
11	PREMIBUSSOLA PRESSING BUSH PRESSE RONDELLE STOPFBUCHSDRUCKRING	ASTM A 4479 304
12	MOLLE A TAZZA SPRING WASHERS RONDELLES BELLEVILLE TELLERFEDERN	C72/50Cr V ₄ X5CrNi17.7 or X12CrNi17.7 ZINCATO - GALVANIZED - ZINGUE - VERZINKT ON REQUEST
13	VITE DI FERMO E FERMO PIN AND STOP PIN PLOT ET PLOT D'ARRET ANSCHLAGBOLZEN	UNI 3740 8.8 UNI 3951 A2-70 ZINCATO - GALVANIZED - ZINGUE - VERZINKT ON REQUEST
14	DADO - CONTRODADO NUT - LOCK NUT ECROU - CONTRE-ECROU MUTTER - KONTERMUTTER	UNI 3740 - 6S ASTM A479 304 ZINCATO - GALVANIZED ZINGUE - VERZINKT ON REQUEST
15	LEVA WRENCH LEVIER HANDHEBEL	AISI 1010 ASTM A479 304 ZINCATO - GALVANIZED ZINGUE - VERZINKT ON REQUEST
16	VITE SCREW VIS SCHRAUBE	UNI 3740 8.8 UNI 3951 A2-70 ZINCATO - GALVANIZED - ZINGUE - VERZINKT ON REQUEST

* RICAMBI CONSIGLIATI - RECOMMENDED SPARE PARTS - PIECES DE RECHANGE CONSEILLEES - ERSATZTEIL EMPFEHLUNG

DIMENSIONI - DIMENSION - DIMENSIONS - ABMESSUNGEN

DN	15	20	25	32	40	50	65	80	100	125	150	200	250	300
A	10	10	12	12	16	16	22	22	30		42	48	56	
B	6	6	8	8	10	10	14	14	18		28	32	36	
C	7	7	10	10	10	10	12	12	17		19	20	20	
D	57,5	58,5	59,5	71	69	82	89	109	94		154	180,5	S/2	
E	15	19	25	30	38	51	64	76	101		152	203	254	
F	M5	M5	M5	M5	M6	M6	M8	M8	M8		M12	M16	M20	
ISO	F03	F03	F03	F03	F05	F05	F07	F07	F07		F12	F14	F16	
G	25	25	25	25	35	35	55	55	55		85	100	130	
H	86	88	113	119	110	120	144	152	174		256	294	/	
L	34	33	34	43	46	48	65	77	75		143,5	180	180	
M	145	145	185	185	280	280	370	370	470		750	900	/	
N	50	48	54	73	67	64	79	80	94		125	123	153	
P	32,5	35	41	46,5	55	65	82	90,5	99,5		144	183	229	
R	8	8	17	17	20	20	24	24	26		34	37	45	
S	140	151	165	179	191	216	241	283	305		403	502	570	
T	36	36	36	36	50	50	70	70	70		125	140	165	
Kg	4	5,2	6,8	11	14	19	28	38	54		130	190	220	
Kg											82	130		

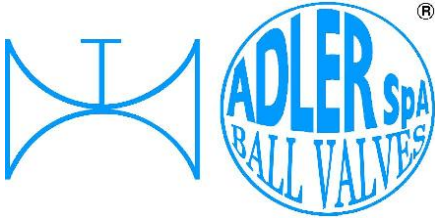
- DATI E CARATTERISTICHE SOGGETTI A VARIAZIONI SENZA PREAVVISO
- SPECIFICATIONS SUBJECT TO MODIFICATION WITHOUT PRIOR NOTICE
- TOUS DROITS DE MODIFICATION RESERVES
- KONSTRUKTIONÄNDERUNGEN VORBEHALTEN

ASTM A 105

ASTM A 351 CF8M

ON REQUEST





ISO 9001:2008 by L.R.
 PED DIR. 97/23/EC by L.R.
 ATEX DIR. 94/9/EC by B.V.
 FIRE SAFE EXECUTION by L.R.
 ISO 15848 by TÜV
 ANTISTATIC DEVICE by L.R.
 FIRE SAFE TESTED ISO 10497 by L.R.

TYPE
FG2
 ANSI 300

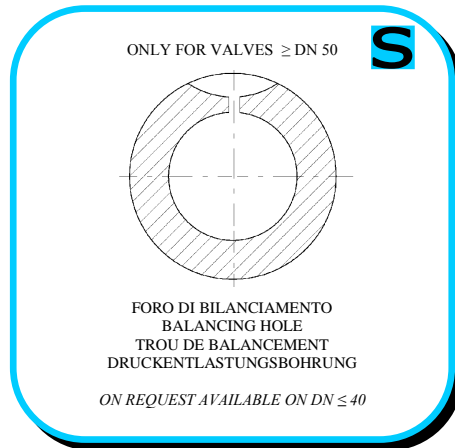
VALVOLA A SFERA "ANSI B16.10" PASSAGGIO TOTALE
 BALL VALVES "ANSI B16.10" FULL BORE

ROBINETS A BOISSEAU SPHERIQUE "ANSI B16.10" PASSAGE INTEGRAL
 FLANSCHKUGELHÄHNNE IN "ANSI B16.10" VOLLER DURCHGANG

• ESECUZIONI • EXECUTIONS • EXECUTIONS • AUSFÜHRUNGEN



EXECUTION 4 - 12



EXECUTION 6 - 16

S STANDARD

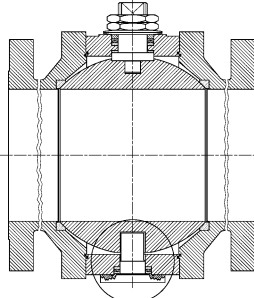
O OPTIONAL

VALVOLE CERTIFICATE S.I.L. 3
 VALVES CERTIFIED S.I.L. 3



2 ONLY FOR DN 250 **S**

TYPE FG3



FOR DETAIL SEE EXECUTION N°5

3 **O**

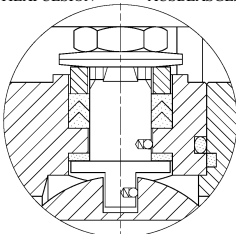
STAINLESS STEEL

ASTM A479 304
 DN 15 ÷ 100

ASTM A351 CF8
 DN 150 ÷ 300

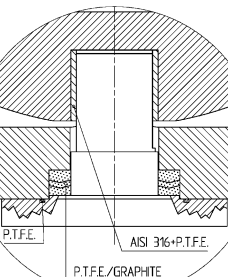
4 **S**

-STELO ANTI ESPULSIONE -ANTI BLOW OUT STEM
 -TIGE ANTIEXPULSION -AUSBLASGESICHERTE WELLE



-PACCO A "V" -CHEVRON RINGS
 -JOINT A "V" -3 FACHE DACHMANSCHETE
 ANTISTATIC DEVICE ANTISTATIK VORRICHTUNG BS 5146

5 ONLY FOR DN 250 **S**

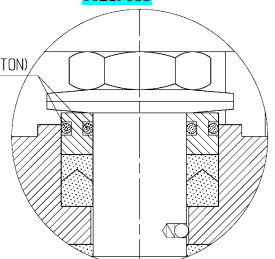


PIVOT EXECUTION

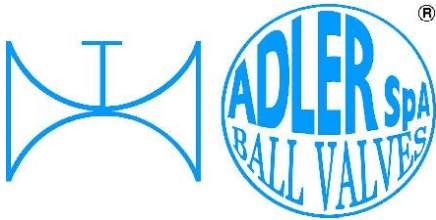
6 **O**

BREVETTO - PATENTED
 00219688

FKM (VITON)



-"O" RING STELO "O" RING ON STEM
 -TIGE AVEC "O" RING
 -"O" RING IM SPINDELBEREICH



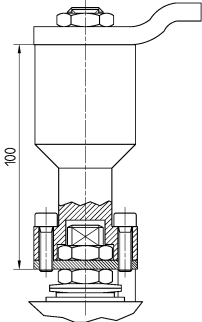
ISO 9001:2008 by L.R.
 PED DIR. 97/23/EC by L.R.
 ATEX DIR. 94/9/EC by B.V.
 FIRE SAFE EXECUTION by L.R.
 ISO 15848 by TÜV
 ANTISTATIC DEVICE by L.R.
 FIRE SAFE TESTED ISO 10497 by L.R.

TYPE
FG2
 ANSI 300

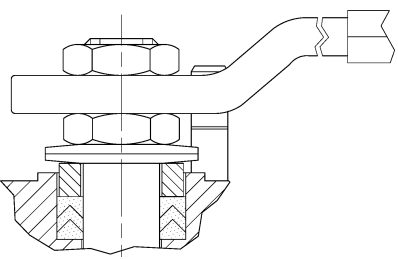
VALVOLA A SFERA "ANSI B16.10" PASSAGGIO TOTALE
 BALL VALVES "ANSI B16.10" FULL BORE

ROBINETS A BOISSEAU SPERIQUE "ANSI B16.10" PASSAGE INTEGRAL
 FLANSCHKUGELHÄHNE IN "ANSI B16.10" VOLLER DURCHGANG

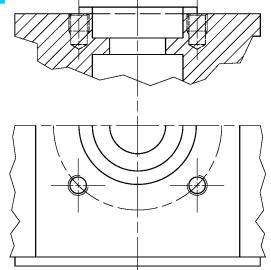
• ESECUZIONI • EXECUTIONS • EXECUTIONS • AUSFÜHRUNGEN

7  **O**

-PROLUNGA STELO -STEM EXTENSION
 -TIGE PROLONGEE -SPINDELVERLÄNGERUNG

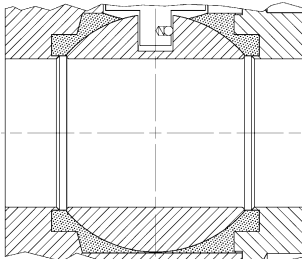
8  **O**

-PARTICOLARI INOX -STAINLESS STEEL DETAILS
 -ACCESSOIRES EN INOX -EDELSTAHLTEILE

9  **S**

-ATTACCO "ISO" -"ISO" CONNECTIONS
 -SYSTEM "ISO" -ANSCHLUSS "ISO"

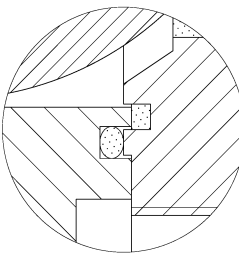
10 **PN**
25 ÷ 40

11  **O**

-TENUTA INTEGRALE -POCKETLESS SEATS
 -TENUUE INTEGRALE -TOTRAUMARM
 R.T.F.E.

12 **FIRE SAFE**
ISO 10497 "ISO-FT"
(BS 6755 / API 607)

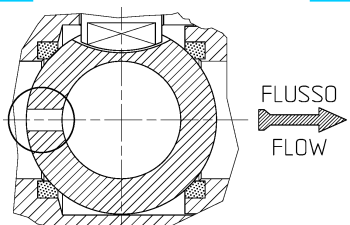


13  **S**

BREVETTO - PATENTED
 00219619

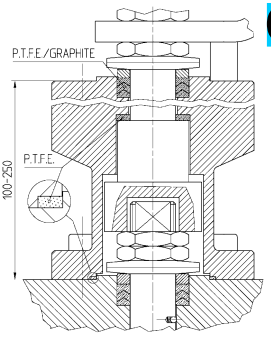
-DOPPIA TENUTA -DOUBLE SEALS
 -DOUBLE ETANCHEITE -DOPPELTE ABDICHTUNG
 -LATERALE A BATTUTA -METAL BEATING END
 -LATERAL AVEC BATTUE MECANIQUE
 -METALLISCHER ANSCHLAG DES GEGENGEHÄUSES

14 **VEDERE / SEE ANSI B16.34** **O**



FLUSSO
 FLOW

-TROU DECOMPRESSION DANS LA BOULE
 -ENTLASTUNGSBOHRUNG IN DER KUGEL
VALVOLA MONO DIREZIONALE
MONO-DIRECTIONAL VALVE

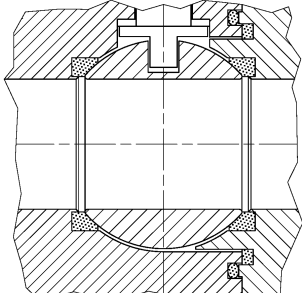
15  **O**

P.T.F.E./GRAPHITE
 100-250
 P.T.F.E.

-SERVIZIO CRIOGENICO - CRYOGENIC SERVICE
 -SERVICE CRYOGÉNIQUE
 -TIEFTEMPERATUR SERVICE

16  **O**

-FIRE SAFE ISO FT+ "O" RING STELO
 -FIRE SAFE ISO FT+ "O" RING ON STEM
 -SECURITE FEU ISO FT+ TIGE AVEC "O" RING
 -FEUERSICHERE AUSFÜHRUNG ISO FT+
 "O" RING IM SPINDELBEREICH

17  **O**

-TENUTA INTEGRALE METALLICA
 -METALLIC POCKET LESS SEATS
 -TENUUE INTEGRALE MATTALLIQUE
 -TOTRAUMARM METALLISCHES

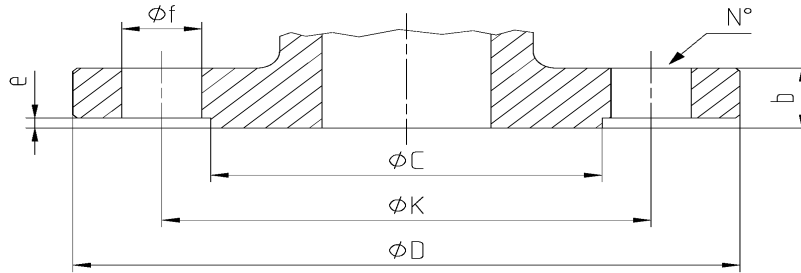
GEAR BOX
AG SERIES





DIMENSIONI FLANGE ANSI B16.5
FLANGE DIMENSION ANSI B16.5
DIMENSIONS BRIDES ANSI B16.5
FLANSCHANSCHLUSSMASSE ANSI B16.5

TABLE 04



DN	Ref.	1/2"	3/4"	1"	1 1/4"	1 1/2"	2"	2 1/2"	3"	4 "	5"	6"	8"	10"	12"
ANSI 300 RF	D	95.3	117.4	124	133.4	155.5	165.1	190.5	209.6	254	279.4	317.5	381	444.5	
	C	35.1	43	50.8	63.5	73.2	92	104.7	127	157.3	185.7	215.9	269.8	323.9	
	K	66.5	82.6	88.9	98.6	114.3	127	149.4	168.1	200.2	134.9	269.7	330.2	387.4	
	N°	4	4	4	4	4	8	8	8	8	8	12	12	16	
	f	15.8	19.1	19.1	19.1	22.4	19.1	22.4	22.4	22.4	22.4	22.4	25.4	28.5	
	b	14.3	15.8	17.6	19.1	20.6	22.4	25.4	28.5	31.8	35.1	36.6	41.2	47.8	
	e	1.6	1.6	1.6	1.6	1.6	1.6	1.6	1.6	1.6	1.6	1.6	1.6	1.6	

