

TYPE
APS-2
FROM APS 250 TO APS 300

**SINGOLO EFFETTO
 DOPPIO EFFETTO
 SINGLE ACTING
 DOUBLE ACTING**

**ATTUATORE PNEUMATICO
 PNEUMATIC ACTUATORS**

**ACTIONNEURS PNEUMATIQUE
 PNEUMATISCHE ANTRIEBE**



According to S.I.L. 2

CONNECTION ADLER'S VALVES STRAIGHT WAY PN 40 / ACTUATORS WITH AIR AT 5 bar															
DN	10	15	20	25	32	40	50	65	80	100	125	150	200	250*	300*
APS D.A.														250	250
APS S.A.													250	300	

* PN 16

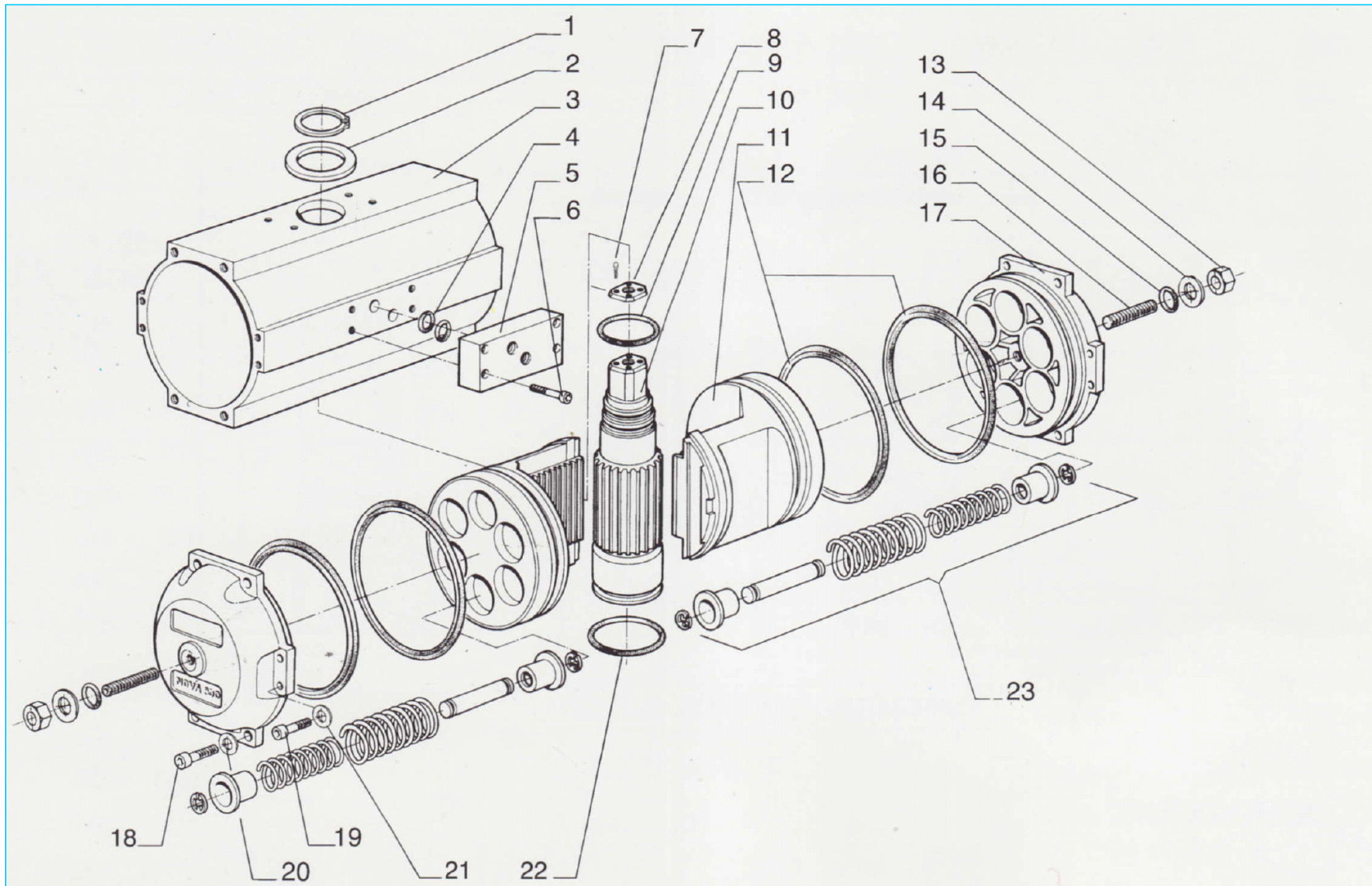
PRESSIONE DI ALIMENTAZIONE:	min. pressione di alimentazione 5 bar. max. pressione di alimentazione 10 bar.	PRESSURE RANGE:	min. working pressure 5 bar. max. working pressure 10 bar.
ALIMENTAZIONE:	aria secca o lubrificata, filtrata.	SUPPLY:	filtered dry or lubricated air.
TEMPERATURA:	-30°C a +80°C	TEMPERATURE RANGE:	-30°C to +80°C
CORSA:	90° con regolazione meccanica ±5°.	STROKE:	90° with standard adjustment ±5°.
LUBRIFICAZIONE:	tutte le parti in movimento sono lubrificate a vita.	LUBRICATION:	all moving parts are factory lubricated for cycle life of the actuator.
COSTRUZIONE:	ideale per essere installata in ambienti interni ed esterni.	CONSTRUCTION:	suitable for indoor and outdoor installation.
CONNESSIONI:	foratura inferiore per accoppiamento valvola, secondo ISO 5211. Interfaccia per elettrovalvola, estremità superiore albero e foratura superiore per fissaggio accessori secondo NORME VDI/VDE 3845, NAMUR.	CONNECTIONS:	bottom drilling to match valve in accordance with ISO 5211. Interface for solenoid valve, shaft top end and top drilling to assemble accessories are in accordance with VDI/VDE 3845, NAMUR.

APS-2/08 RIPRODUZIONE VIETATA - COPYRIGHT



TYPE
APS
 DOPPIO EFFETTO
 SINGOLO EFFETTO
 DOUBLE ACTING (D.A.)
 SINGLE ACTING (S.A.)

ATTUATORE PNEUMATICO
PNEUMATIC ACTUATORS
ACTIONNEURS PNEUMATIQUE
PNEUMATISCHE ANTRIEBE



Pos. Item	Descrizione Description	Q.tà Q.ty
1*	Seeger albero Pinion snap ring	1
2*	Rondella albero Pinion Washer	1
3	Corpo Body	1
4*	"O" ring piastra alimentazione Base "O" ring	2
5	Piastra alimentazione Supply base	1
6	Vite piastra alimentazione Supply base screw	4
7	Vite piastrina Adaptor plate screw	4
8	Piastrina Adaptor plate	1
9*	"O" ring sup. albero Upper Pinion "O" ring	1
10	Albero Pinion	1
11	Pistone Piston	2
12*	"O" ring pistoni e fondelli Pistons End-cap "O" ring	4
13	Controdado per grano Stop bolt retaining nut	2
14*	Rondella per grano Stop bolt washer	2
15	"O" ring per grano Stop bolt "O" ring	2
16	Grano regolazione corsa Stop bolt	2
17	Fondello End-cap	2
18	Vite fondello End-cap Screw	8
19	Vite fondello End-cap Screw	8
20	Rondella Washer	8
21	Rondella Washer	8
22*	"O" ring inf. albero Lower Pinion "O" ring	1
23	Molla precaricata Spring cartridge	12 max \diamond

* Parti di ricambio consigliate per ordinaria manutenzione / * Solo per attuatori a semplice effetto
 * Suggested spare parts list for maintenance / * Only for single acting actuators

DESCRIZIONE - DESCRIPTION	MATERIALI STANDARD - STANDARD MATERIALS	FINITURA - FINISHING
CORPO ATTUATORE / ACTUATOR BODY	LEGA D'ALLUMINIO / ALUMINIUM ALLOY	ANOD. DURO / HARD ANODIZED
PISTONE / PISTON	LEGA D'ALLUMINIO PRESSOFUSO / PRESSURE DIE CASTING ALUMINIUM ALLOY	NATURALE / NATURAL
TESTATA / END-CAP	LEGA D'ALLUMINIO PRESSOFUSO / PRESSURE DIE CASTING ALUMINIUM ALLOY	RIVEST. SMALTO POLIURETANICO / POLYURETHANE PAINT COATED
ALBERO / PINION	ACCIAIO NITRURATO / NITRIDE COATED STEEL	
GUIDA PISTONE / PISTON GUIDE	NYLON E BISOLFURO DI MOLIBDENO / NYLON AND MOLYBDENUM DISULFIDE	NATURALE / NATURAL
"O" RINGS / "O" RINGS	GOMMA NITRILICA (BUNA N) / NITRILE RUBBER (BUNA N)	60 IRHD / 60 IRHD
MOLLE / SPRINGS	ACCIAIO PER MOLLE / SPRING STEEL	VERNICIATO / PAINTED
VITI E DADI / SCREW AND NUTS	ACCIAIO INOX / STAINLESS STEEL	NATURALE / NATURAL

TYPE	TORQUE OUTPUT FROM ACTUATORS Nm										
	50	63	85	100	115	125	150	175	200	250	300
APS D.A.										2116	3128
APS S.A.										991	1669
										445	740
										1189	1671
*S.A. WITH 4 SPRINGS ON EACH SIDE											
SPRING STROKE 90°			SPRING STROKE 0°			0°			90°		

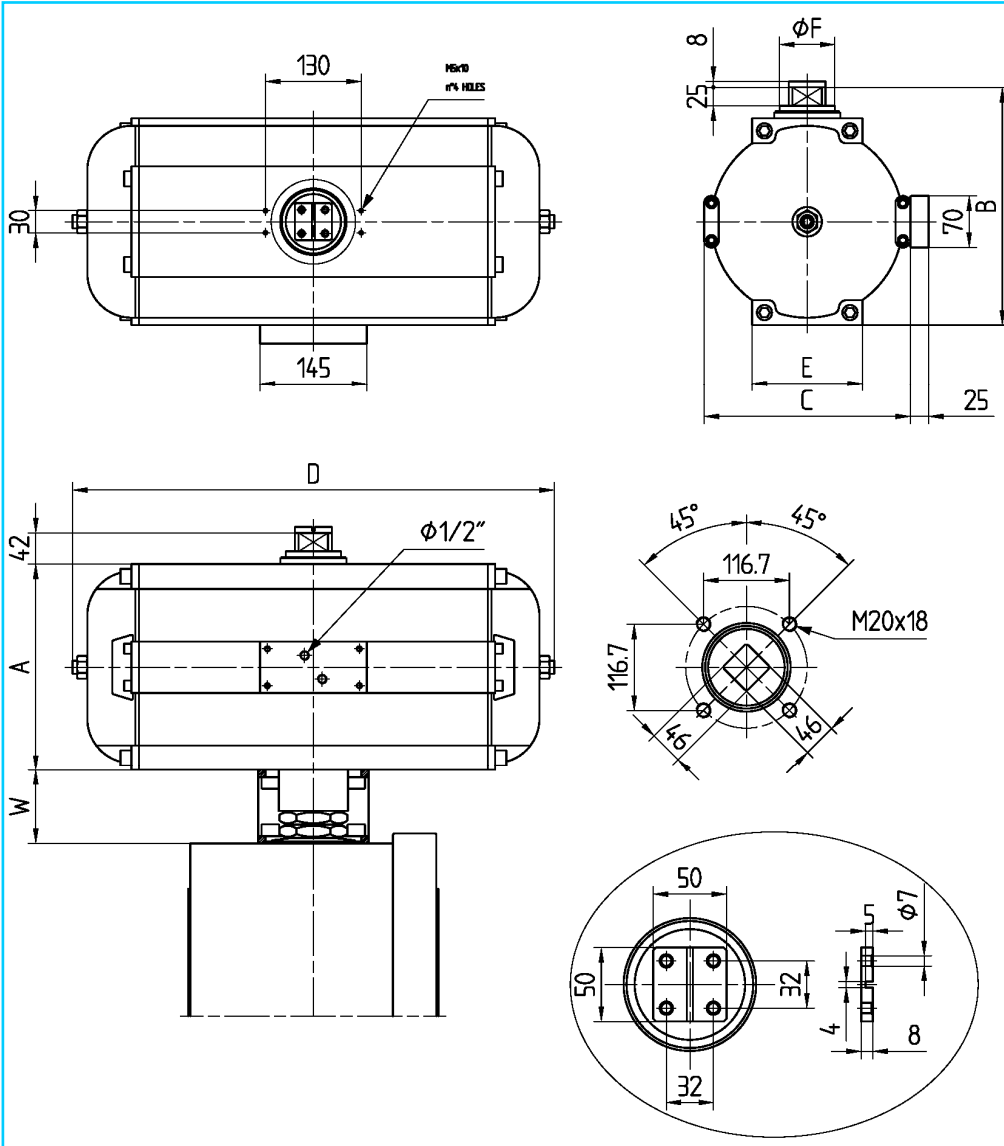
ADLER SpA - VALVOLE A SFERA
 20010 S. STEFANO TICINO (MI) ITALY V.le BORLETTI, 14 Tel. +39/02974842.11 FAX +39/0297271698
 E-mail: adler@adlerspa.com <http://www.adlerspa.com>

APS-2/08 RIPRODUZIONE VIETATA - COPYRIGHT



TYPE
APS DA
SA

ATTUATORE PNEUMATICO-PNEUMATIC ACTUATORS- ACTIONNEURS PNEUMATIQUE-PNEUMATISCHE ANTRIEBE

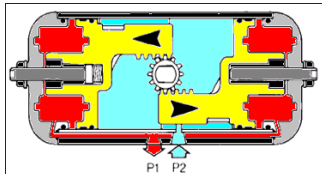


TYPE	APS250		APS300	
	D.A.	S.A.	D.A.	S.A.
ISO 5211 STD	F16		F16	
A	280		340	
B	322		382	
C	280		340	
D	654		788	
E	150		160	
ϕF	75		80	
W*	100		100	
Litres	12.4	11.8	23	16.7
Kg	62	76.5	99	131

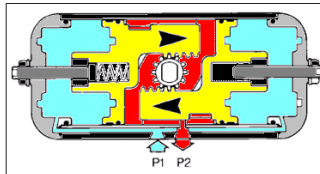
*W
altezza gabbietta attacco
valvola/attuatore
height bracket connection
valve/actuator

DATI E CARATTERISTICHE
SOGGETTI A VARIAZIONI SENZA
PREAVVISO
SPECIFICATIONS SUBJECT TO
MODIFICATION WITHOUT PRIOR
NOTICE TOURS DROITS
MODIFICATION RESERVES
KONSTRUKTIONSÄNDERUNGEN
VORBEHALTEN

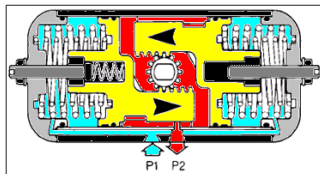
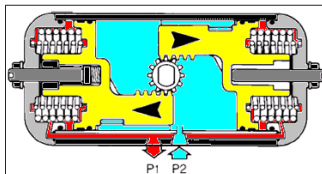
PISTON IN OPENING STAGE



PISTON IN CLOSING STAGE



ATTUATORI
A DOPPIO
EFFETTO
DOUBLE
ACTING
ACTUATORS



ATTUATORI
A SEMPLICE
EFFETTO
SINGLE
ACTING
ACTUATORS